

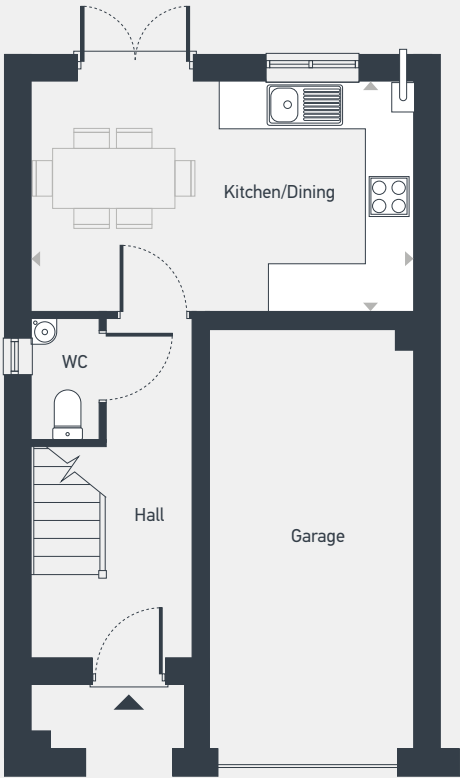


# Marble Square

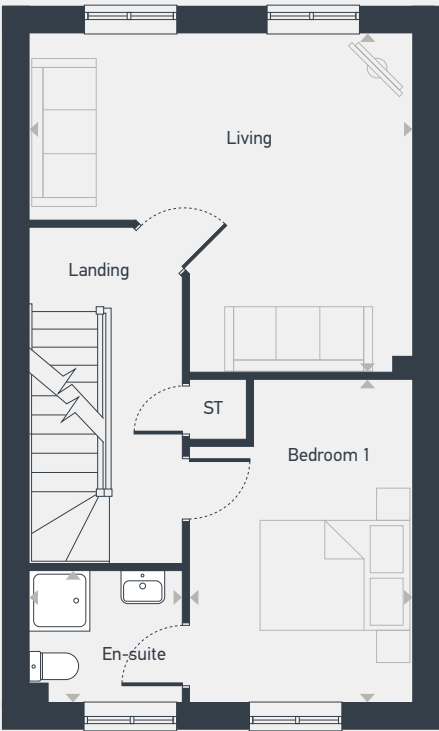
# The Belgrave 4 bedroom home

Plots as drawn: 20  
Plots handed: 21

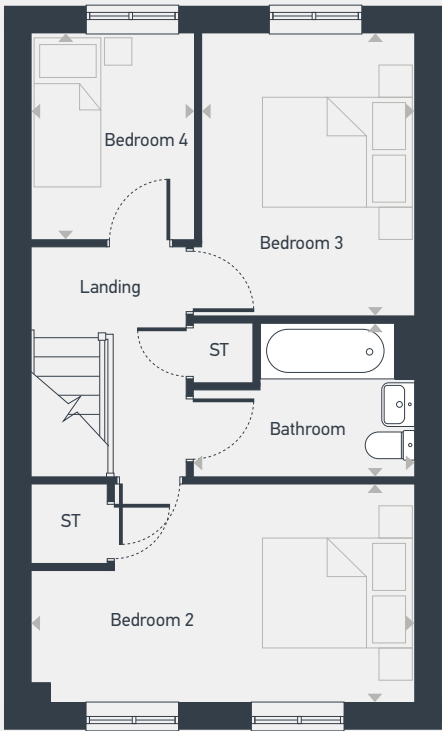
107.2 sq.m / 1,154 sq.ft



GROUND FLOOR



FIRST FLOOR



SECOND FLOOR

ST: Storage WC: Water Closet

DIMENSIONS	m	ft
Kitchen/Dining	4.82m x 2.91m	15'10" x 9'7"
Living	4.84m x 4.28m	15'10" x 14'0"
Bedroom 1	4.08m x 2.81m	13'4" x 9'3"
En-suite	1.93m x 1.66m	6'4" x 5'5"

DIMENSIONS	m	ft
Bedroom 2	4.84m x 2.75m	15'10" x 9'0"
Bedroom 3	3.57m x 2.68m	11'8" x 8'10"
Bedroom 4	2.60m x 2.06m	8'6" x 6'9"
Bathroom	2.79m x 1.94m	9'2" x 6'4"



0115 671 0397 | [sales@thesohub.co.uk](mailto:sales@thesohub.co.uk) | [placesforpeople.co.uk/marble-square](https://placesforpeople.co.uk/marble-square)  
Marble Square, Nightingale Road, Osmaston, Derby DE24 8BF

**Please note:** All CGIs, layouts and floor plans, configurations, maps and information are intended for guidance only and accuracy of this information cannot be relied upon by prospective purchasers who must make their own enquiries to satisfy themselves by inspection or otherwise as to the correct detail. Sizes and dimensions approximate and subject to change.