



The Brentwood

Gateway House
Runwell Road, Wickford, SS11 7HG

2 Bedroom Apartment

Sanctuary

The Brentwood



#mysanctuaryhome

Available on the 5th floor of Gateway House, The Brentwood is a spacious 2 bedroom apartment that's perfect for first-time buyers or couples looking for a brand-new apartment.

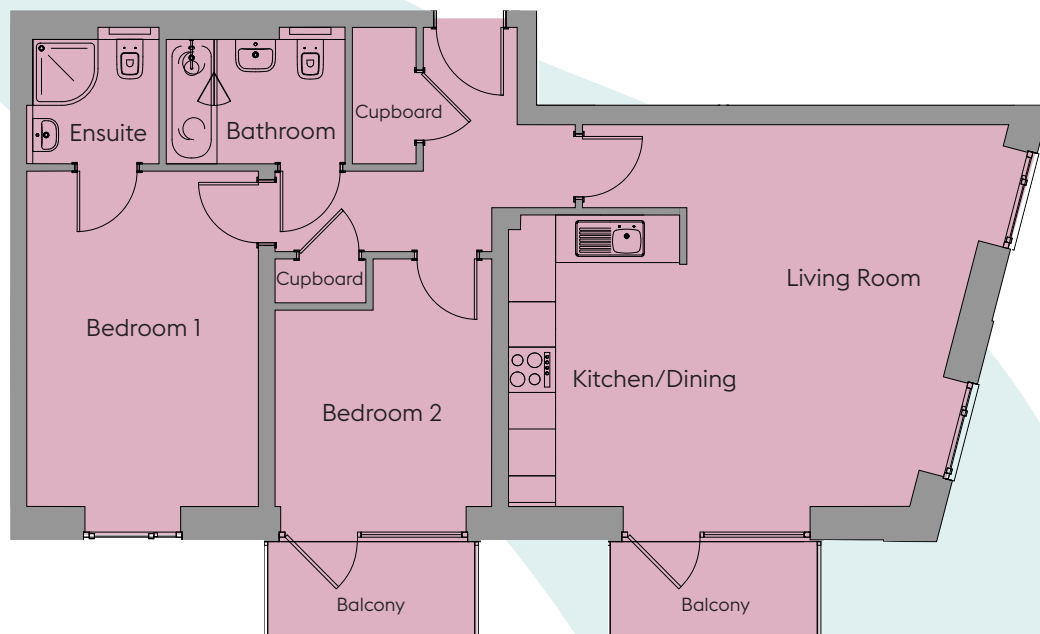
The Brentwood features an open-plan kitchen/living/dining room with balcony access, a master bedroom complete with an ensuite bathroom and an additional bedroom that also benefits from having a separate balcony. The apartment also includes a family bathroom and multiple convenient storage cupboards in the hallway.

Plot 119

2 Bedroom Apartment

	Width (m) x Length (m)	Width (feet and inches) x Length (feet and inches)
Kitchen/Dining	2.42 x 4.01	7'11" x 13'2"
Living Room	5.48 x 4.52	18'0" x 14'10"
Bedroom 1	4.60 x 3.27	15'1" x 10'9"
Ensuite	1.92 x 1.86	6'3" x 6'1"
Bedroom 2	3.41 x 3.05	11'2" x 10'0"
Bathroom	1.93 x 2.46	6'4" x 8'1"

Total Area: 76.15sqm / 829sqft



07960 951 206

www.sanctuary-homes.co.uk

Gateway.House@sanctuary.co.uk

Images are purely for illustrative purposes and are not representative of specification. Sizes are based on maximum measurements and are for indication only. Any intending purchaser should satisfy themselves by inspection or otherwise as to their accuracy. Floorplans have been increased in size for legibility and are not to scale to all other plans within this brochure. Also some plots may be handed. Please consult the sales team for more information.

Sanctuary