



The Downham

Gateway House
Runwell Road, Wickford, SS11 7HG

1 Bedroom Apartment

Sanctuary

The Downham



#mysanctuaryhome

Located on the 5th floor of Gateway House, The Downham is a lovely 1-bedroom apartment with a thoughtful layout and stunning roof terrace access.

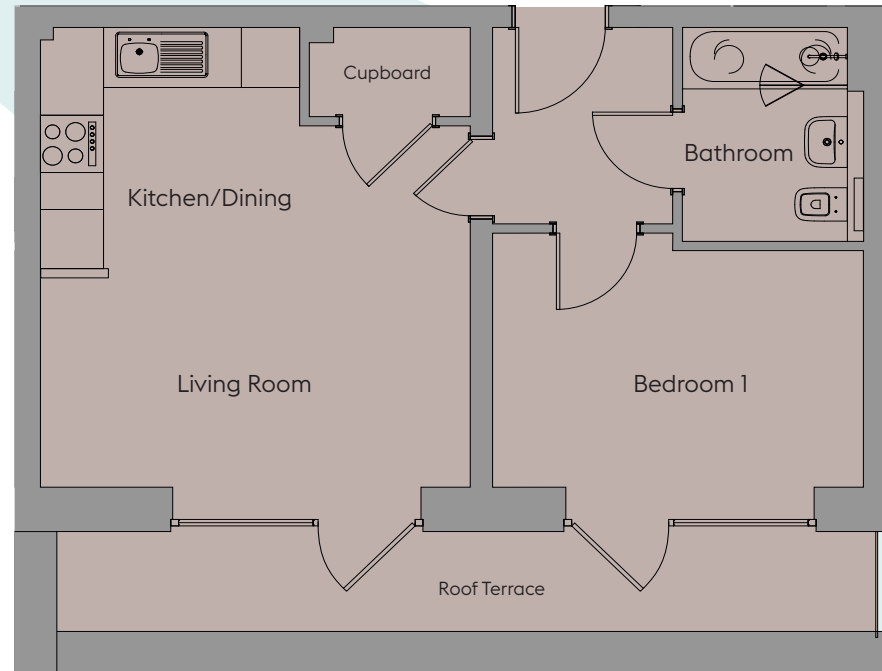
The apartment features a spacious open-plan kitchen/living/dining room and master bedroom, both with access to the outdoor space that runs the whole width of the property. The apartment also includes a family bathroom and a convenient storage cupboard.

Plot 122

1 Bedroom Apartment

	Width (m) x Length (m)	Width (feet and inches) x Length (feet and inches)
Kitchen/Dining	2.67 x 4.43	8'9" x 14'6"
Living Room	2.29 x 4.43	7'6" x 14'6"
Bedroom 1	2.58 x 3.89	8'6" x 12'9"
Bathroom	1.90 x 2.37	6'3" x 7'9"

Total Area: 41.8sqm / 450sqft



07960 951 206

www.sanctuary-homes.co.uk

Gateway.House@sanctuary.co.uk

Images are purely for illustrative purposes and are not representative of specification. Sizes are based on maximum measurements and are for indication only. Any intending purchaser should satisfy themselves by inspection or otherwise as to their accuracy. Floorplans have been increased in size for legibility and are not to scale to all other plans within this brochure. Also some plots may be handed. Please consult the sales team for more information.

Sanctuary