

# The Hawkwell

Gateway House  
Runwell Road, Wickford, SS11 7HG

**2 Bedroom Apartment**



Sanctuary

# The Hawkwell



#mysanctuaryhome

Available on the 1st, 2nd, 3rd and 4th floors of Gateway House, The Hawkwell is a spacious 2 bedroom apartment ideal for first-time buyers looking to get onto the property ladder with an apartment offering some extra space.

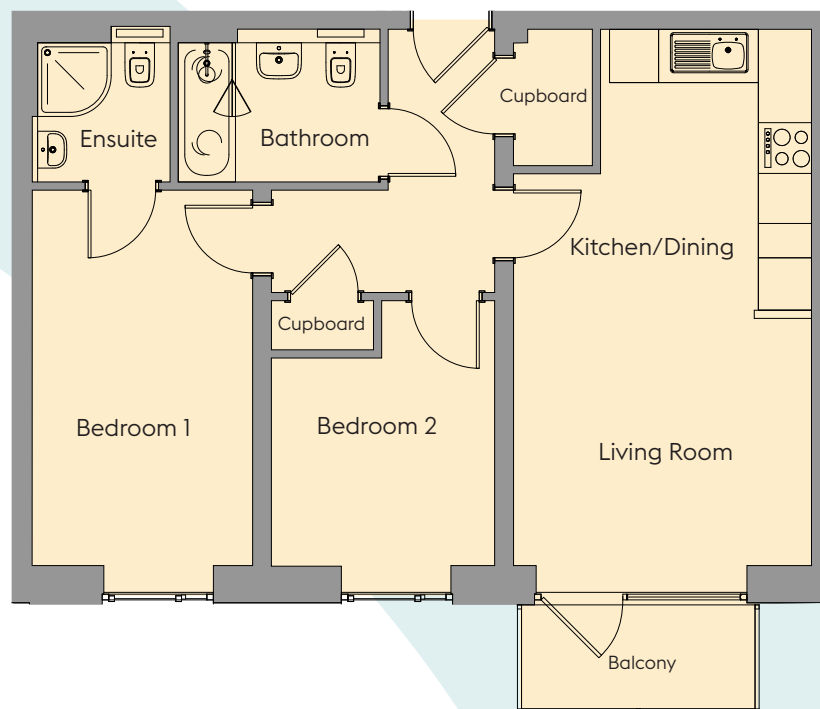
From the entrance hallway, you have a spacious open-plan kitchen/living/dining room, including balcony access from the living area. To the right, you have a master bedroom complete with an ensuite, plus an additional bedroom and a family bathroom.

## Plots 78, 79, 89, 90, 100, 101, 111, 112

2 Bedroom Apartment

	Width (m) x Length (m)	Width (feet and inches) x Length (feet and inches)
Kitchen/Dining	3.43 x 3.72	11'3" x 12'2"
Living Room	3.09 x 3.72	10'2" x 12'2"
Bedroom 1	2.76 x 4.55	9'1" x 14'11"
Ensuite	1.73 x 1.99	5'8" x 6'6"
Bedroom 2	3.26 x 2.80	10'8" x 9'2"
Bathroom	1.92 x 2.49	6'4" x 8'2"

Total Area: 61.9sqm / 665sqft



07960 951 206

[www.sanctuary-homes.co.uk](http://www.sanctuary-homes.co.uk)

[Gateway.House@sanctuary.co.uk](mailto:Gateway.House@sanctuary.co.uk)

Images are purely for illustrative purposes and are not representative of specification. Sizes are based on maximum measurements and are for indication only. Any intending purchaser should satisfy themselves by inspection or otherwise as to their accuracy. Floorplans have been increased in size for legibility and are not to scale to all other plans within this brochure. Also some plots may be handed. Please consult the sales team for more information.

# Sanctuary