



The Hadleigh

Gateway House
Runwell Road, Wickford, SS11 7HG

2 Bedroom Apartment

Sanctuary

The Hadleigh



#mysanctuaryhome

Available on the 1st, 2nd, 3rd and 4th floor of Gateway House, The Hadleigh is a thoughtfully-designed 2 bedroom apartment.

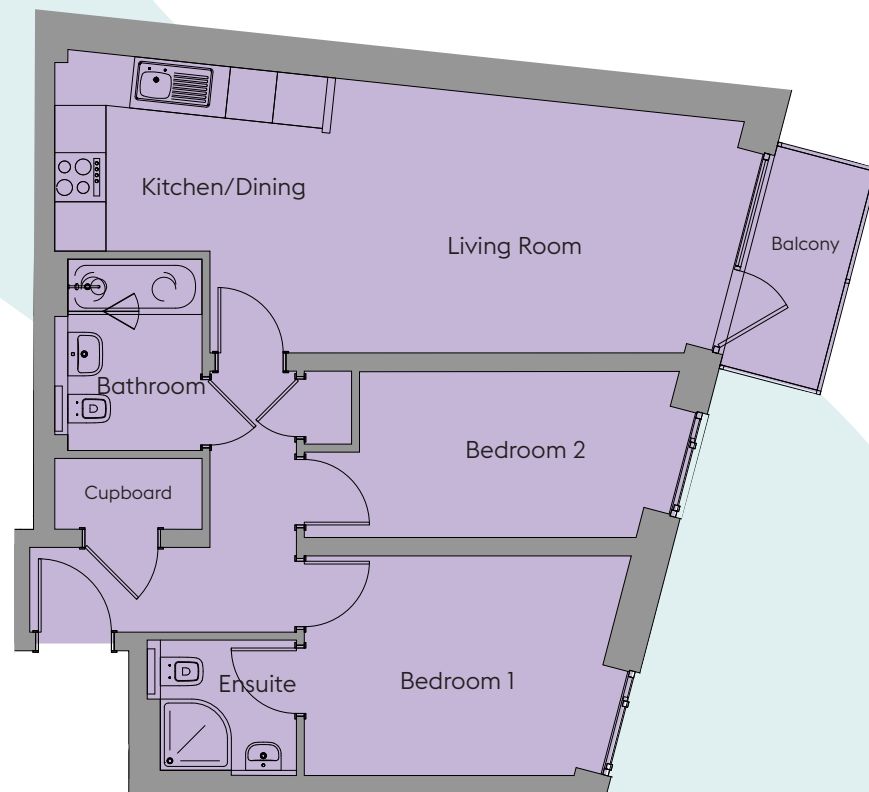
From the entrance hall, you have a master bedroom complete with ensuite at the bottom of the apartment, and an additional bedroom next to it which could easily be used as a spare bedroom or home office. Opposite the additional bedroom is the family bathroom, then at the top of the apartment is a spacious open-plan kitchen/living/dining room with balcony access from the living area.

Plots 74, 85, 96, 107

2 Bedroom Apartment

	Width (m) x Length (m)	Width (feet and inches) x Length (feet and inches)
Kitchen/Dining	2.38 x 3.45	7'10" x 11'4"
Living Room	3.48 x 5.21	11'5" x 17'1"
Bedroom 1	2.83 x 4.15	9'3" x 13'7"
Ensuite	1.72 x 1.96	5'8" x 6'5"
Bedroom 2	2.16 x 4.04	7'1" x 13'3"
Bathroom	1.90 x 2.45	6'3" x 8'0"

Total Area: 65.6sqm / 706sqft



07960 951 206

www.sanctuary-homes.co.uk

Gateway.House@sanctuary.co.uk

Images are purely for illustrative purposes and are not representative of specification. Sizes are based on maximum measurements and are for indication only. Any intending purchaser should satisfy themselves by inspection or otherwise as to their accuracy. Floorplans have been increased in size for legibility and are not to scale to all other plans within this brochure. Also some plots may be handed. Please consult the sales team for more information.

Sanctuary