



The Hockley

Gateway House
Runwell Road, Wickford, SS11 7HG

2 Bedroom Apartment



Sanctuary



The Hockley is a contemporary 2 bedroom apartment located on the 1st, 2nd, 3rd, 4th and 5th floors of Gateway House.

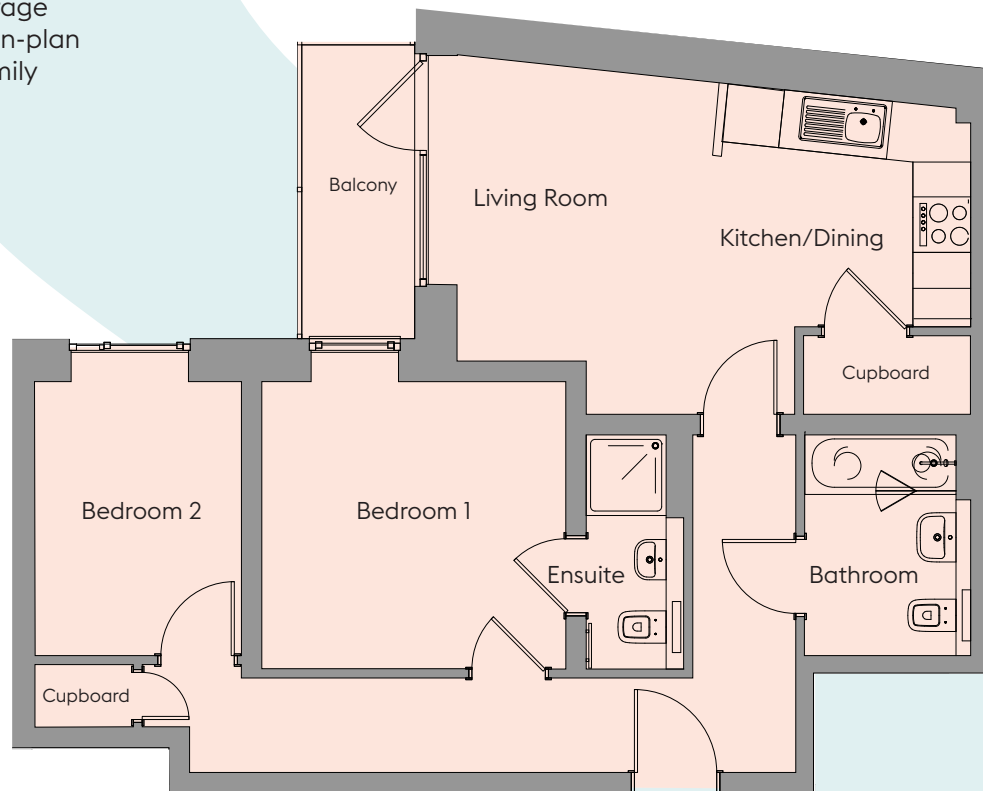
From the entrance hall, you have the master bedroom to the left complete with an ensuite bathroom, and continuing down the hallway brings you to an additional bedroom and storage cupboard. To the right, there a thoughtfully-designed open-plan kitchen/living/dining room with balcony access, plus a family bathroom.

Plots 73, 84, 95, 106, 117

2 Bedroom Apartment

	Width (m) x Length (m)	Width (feet and inches) x Length (feet and inches)
Kitchen/Dining	2.66 x 2.86	8'9" x 9'5"
Living Room	3.00 x 3.81	9'10" x 12'6"
Bedroom 1	3.24 x 3.49	10'8" x 11'5"
Ensuite	1.14 x 2.66	3'9" x 8'9"
Bedroom 2	2.38 x 3.08	7'10" x 10'1"
Bathroom	1.92 x 2.52	6'4" x 8'3"

Total Area: 61.8sqm / 665sqft



07960 951 206

www.sanctuary-homes.co.uk

Gateway.House@sanctuary.co.uk

Images are purely for illustrative purposes and are not representative of specification. Sizes are based on maximum measurements and are for indication only. Any intending purchaser should satisfy themselves by inspection or otherwise as to their accuracy. Floorplans have been increased in size for legibility and are not to scale to all other plans within this brochure. Also some plots may be handed. Please consult the sales team for more information.

Sanctuary