



The Basildon

Gateway House
Runwell Road, Wickford, SS11 7HG

1 Bedroom Apartment



Sanctuary

The Basildon



#mysanctuaryhome

Available on the 1st, 2nd, 3rd, 4th and 5th floors, The Basildon is a modern 1 bedroom apartment that's ideal for those looking to purchase their first home.

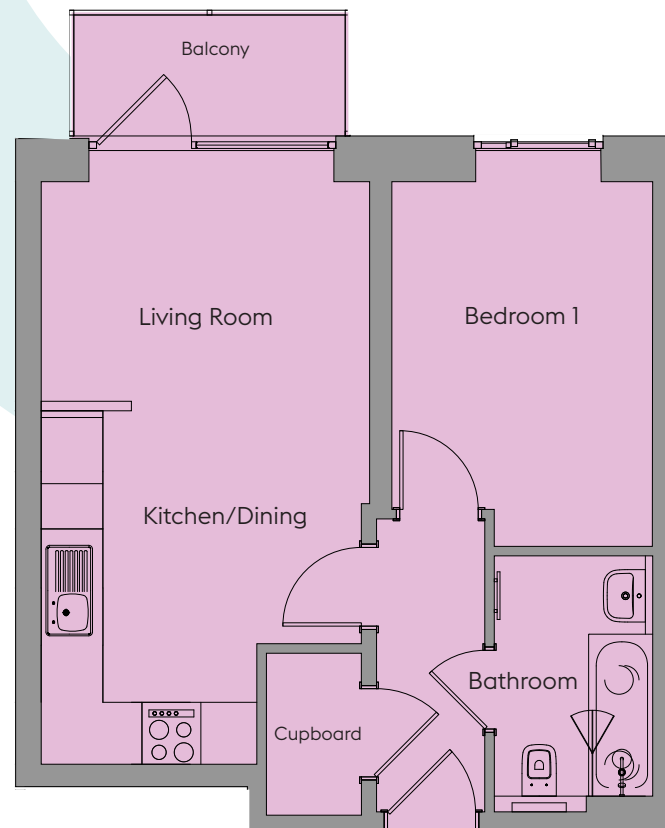
From the entrance hallway, you have a spacious open-plan kitchen/living/dining room to the left of the apartment, including balcony access from the living area. To the right, you have a master bedroom plus a family bathroom.

Plots 71, 82, 93, 104, 115

1 Bedroom Apartment

	Width (m) x Length (m)	Width (feet and inches) x Length (feet and inches)
Kitchen/Dining	3.74 x 3.40	12'3" x 11'2"
Living Room	2.37 x 3.53	7'9" x 11'7"
Bedroom 1	2.81 x 3.86	9'3" x 12'8"
Bathroom	1.71 x 2.75	5'7" x 9'0"

Total Area: 42.3sqm / 455sqft



07960 951 206

www.sanctuary-homes.co.uk

Gateway.House@sanctuary.co.uk

Images are purely for illustrative purposes and are not representative of specification. Sizes are based on maximum measurements and are for indication only. Any intending purchaser should satisfy themselves by inspection or otherwise as to their accuracy. Floorplans have been increased in size for legibility and are not to scale to all other plans within this brochure. Also some plots may be handed. Please consult the sales team for more information.

Sanctuary