

The image shows a modern, four-story brick apartment building with a mix of brickwork and large windows. Each floor has several balconies with black metal railings. Some balconies have small potted plants. The building is set against a clear blue sky with a few wispy clouds. In the foreground, there is a paved parking area with white lines. A dark grey car is parked in the center, and a silver car is partially visible on the right. A black metal railing is in the lower left corner. A dark green banner with a red curved shape on the left is in the top left corner, containing text.

The Benfleet

Gateway House
Runwell Road, Wickford, SS11 7HG

1 Bedroom Apartment

Sanctuary

The Benfleet



#mysanctuaryhome

Located on the 1st, 2nd, 3rd, 4th and 5th floors, The Benfleet is a contemporary 1 bedroom apartment that's perfect for first-time buyers.

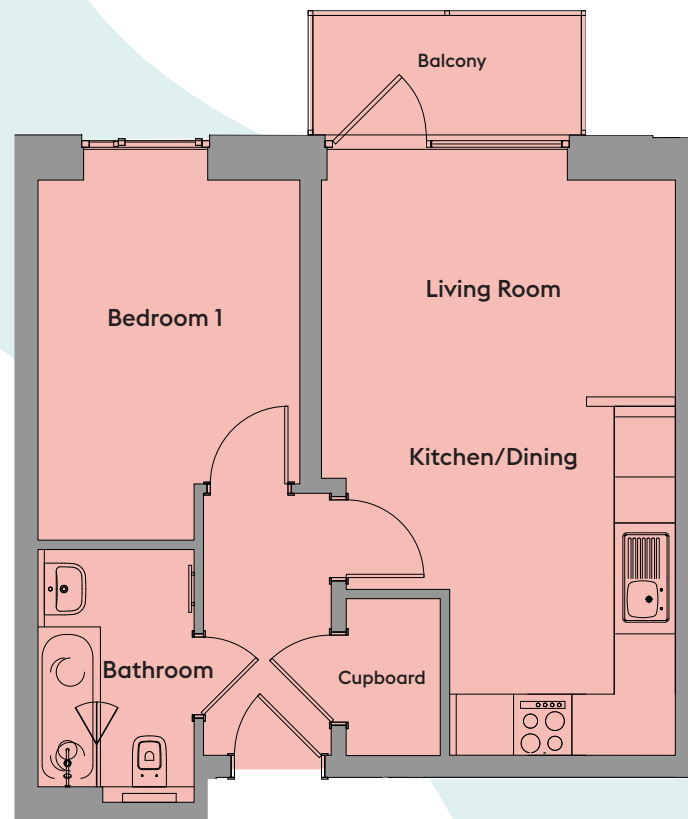
From the entrance hallway, you have a spacious open-plan kitchen/living/dining room to the right of the apartment, including balcony access from the living area. To the left, you have a master bedroom plus a family bathroom.

Plots 70, 81, 92, 103, 114

1 Bedroom Apartment

	Width (m) x Length (m)	Width (feet and inches) x Length (feet and inches)
Kitchen/Dining	3.54 x 3.73	11'7" x 12'3"
Living Room	3.84 x 3.18	12'7" x 10'5"
Bedroom 1	2.85 x 3.87	9'4" x 12'8"
Bathroom	1.74 x 2.74	5'8" x 9'0"

Total Area: 42.2sqm / 454sqft



07960 951 206

www.sanctuary-homes.co.uk

Gateway.House@sanctuary.co.uk

Images are purely for illustrative purposes and are not representative of specification. Sizes are based on maximum measurements and are for indication only. Any intending purchaser should satisfy themselves by inspection or otherwise as to their accuracy. Floorplans have been increased in size for legibility and are not to scale to all other plans within this brochure. Also some plots may be handed. Please consult the sales team for more information.

Sanctuary