

# The Rayleigh

Gateway House  
Runwell Road, Wickford, SS11 7HG

**1 Bedroom Apartment**



Sanctuary

# The Rayleigh



#mysanctuaryhome

With availability on the 1st, 2nd, 3rd, 4th and 5th floors. The Rayleigh is a lovely 1 bedroom apartment that's ideal for first-time buyers looking to get on the property ladder.

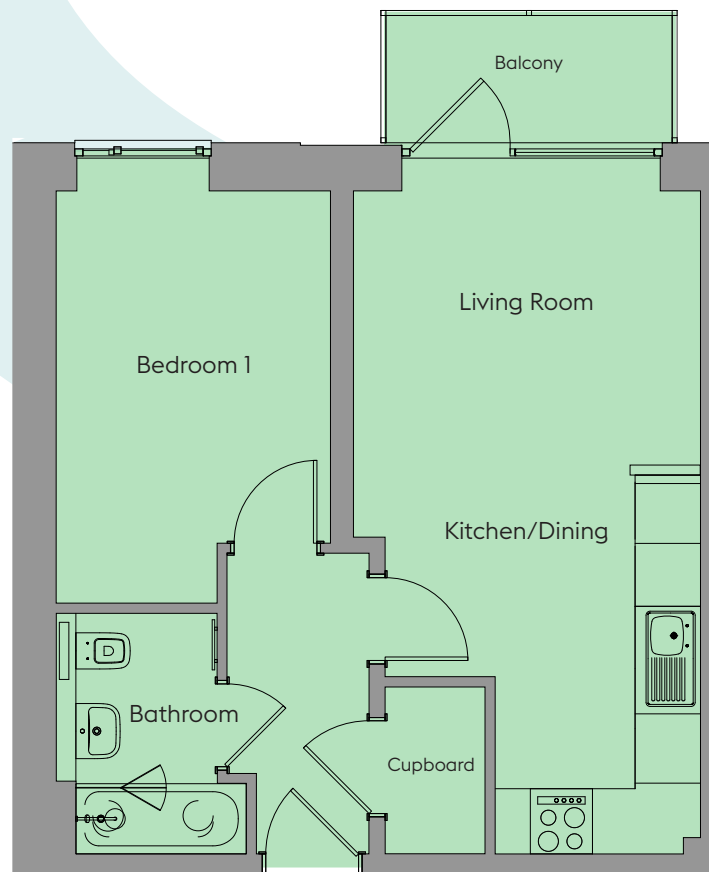
From the entrance hallway, you have a spacious open-plan kitchen/living/dining room to the right of the apartment, including balcony access from the living area. To the left, you have a master bedroom plus a family bathroom.

## Plots 69, 80, 91, 102, 113

1 Bedroom Apartment

	Width (m) x Length (m)	Width (feet and inches) x Length (feet and inches)
Kitchen/Dining	3.18 x 3.68	10'5" x 12'1"
Living Room	3.48 x 3.53	11'5" x 11'7"
Bedroom 1	2.79 x 4.15	9'2" x 13'7"
Bathroom	1.71 x 2.46	5'7" x 8'1"

Total Area: 42.4sqm / 456sqft



**07960 951 206**

**[www.sanctuary-homes.co.uk](http://www.sanctuary-homes.co.uk)**

**[Gateway.House@sanctuary.co.uk](mailto:Gateway.House@sanctuary.co.uk)**

Images are purely for illustrative purposes and are not representative of specification. Sizes are based on maximum measurements and are for indication only. Any intending purchaser should satisfy themselves by inspection or otherwise as to their accuracy. Floorplans have been increased in size for legibility and are not to scale to all other plans within this brochure. Also some plots may be handed. Please consult the sales team for more information.

# Sanctuary