

The Fambridge

Gateway House
Runwell Road, Wickford, SS11 7HG

2 Bedroom Apartment



Sanctuary

The Fambridge



#mysanctuaryhome

Offering an ideal space for you to call home, The Fambridge is located on the ground floor of Gateway House.

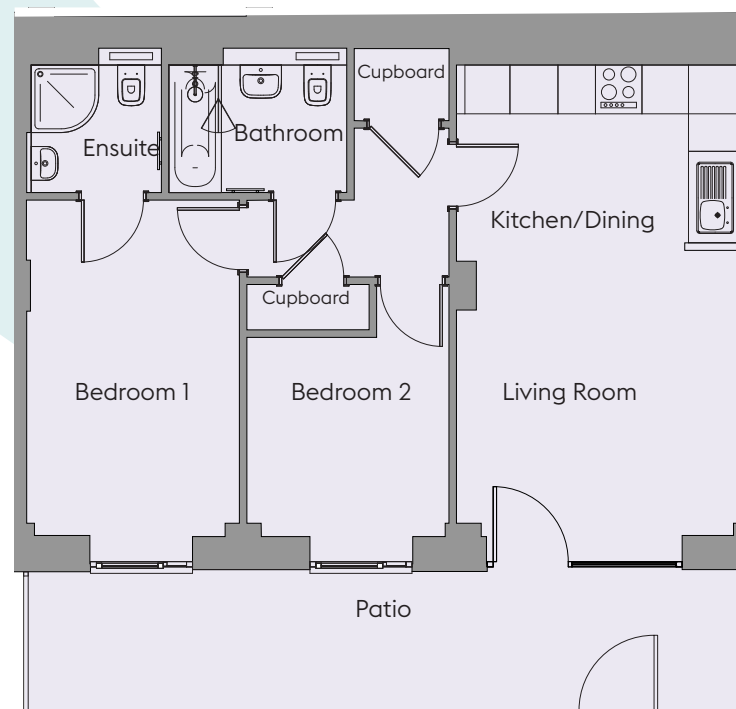
Upon entering the apartment you are greeted by a spacious open-plan kitchen/living/dining area, leading through to the hallway at the centre of the apartment. There is a master bedroom to the left of the apartment complete with an ensuite bathroom, plus an additional bedroom, family bathroom and convenient storage cupboard.

Plot 66

2 Bedroom Apartment

	Width (m) x Length (m)	Width (feet and inches) x Length (feet and inches)
Kitchen/Dining	2.63 x 3.74	8'7" x 12'3"
Living Room	3.86 x 3.82	12'8" x 12'6"
Bedroom 1	2.89 x 4.49	9'6" x 14'9"
Ensuite	1.89 x 1.96	6'2" x 6'5"
Bedroom 2	2.65 x 2.69	8'8" x 8'10"
Bathroom	2.37 x 1.96	7'9" x 6'5"

Total Area: 61.5sqm / 662sqft



07960 951 206

www.sanctuary-homes.co.uk

Gateway.House@sanctuary.co.uk

Images are purely for illustrative purposes and are not representative of specification. Sizes are based on maximum measurements and are for indication only. Any intending purchaser should satisfy themselves by inspection or otherwise as to their accuracy. Floorplans have been increased in size for legibility and are not to scale to all other plans within this brochure. Also some plots may be handed. Please consult the sales team for more information.

Sanctuary