



Hayfield Heights **The Elm**

3 bedroom semi-detached




Computer generated image for illustration purposes only. Finishes and materials used may be subject to change.



Hayfield Heights

The Elm

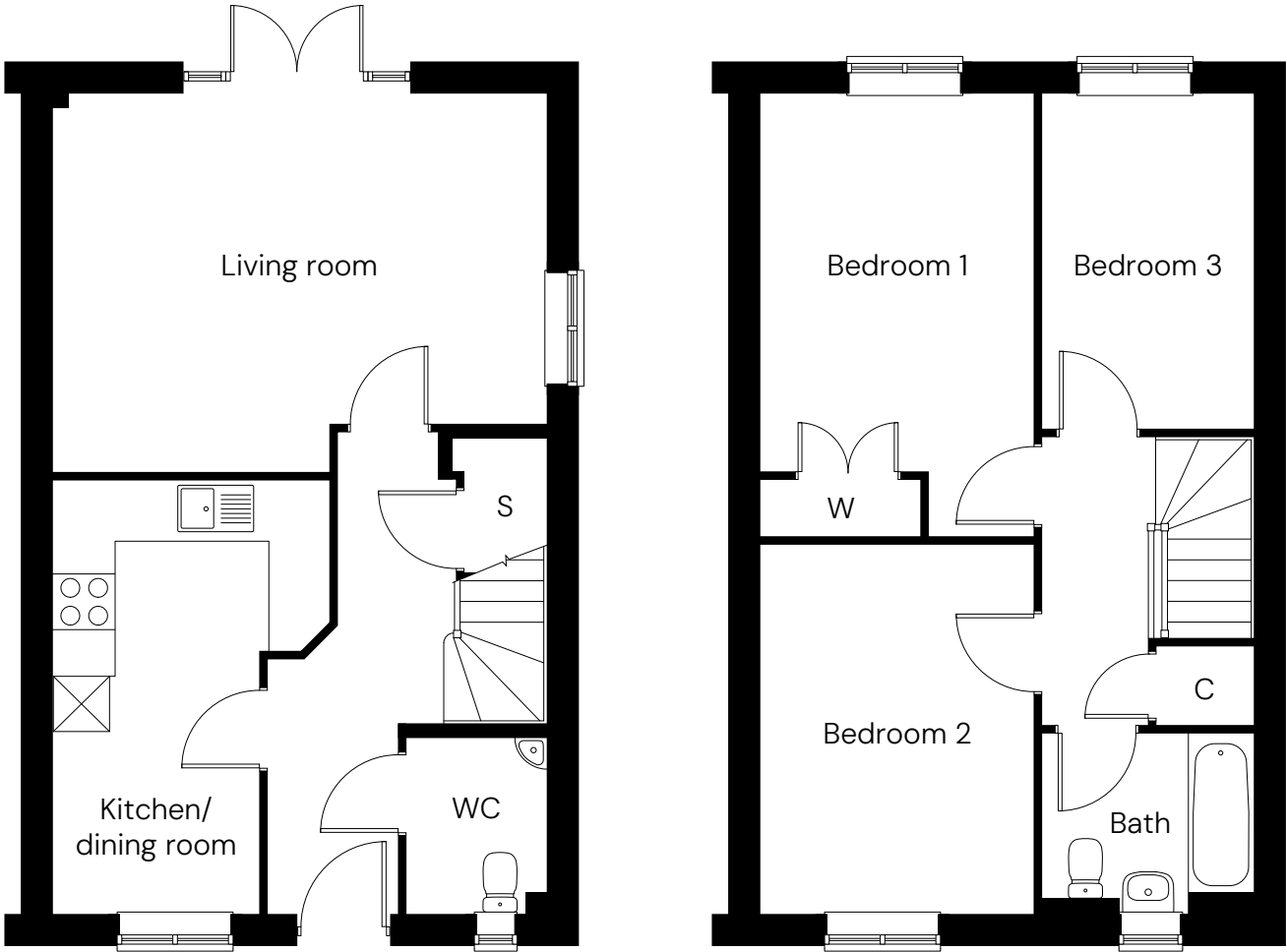
3 bedroom semi-detached
Plot 7

3  1  2 

Room

Kitchen/dining room	3.0m x 4.7m
Living room	5.3m x 4.1m
Bedroom 1	3.0m x 4.1m
Bedroom 2	3.0m x 4.0m
Bedroom 3	2.3m x 3.6m

Total area 93.1m²






C Cylinder S Storage W Wardrobe

Floor plan for illustration purposes only and not to scale. Dimensions are maximum and for general guidance, not suitable for furniture, appliances, or carpet sizing.

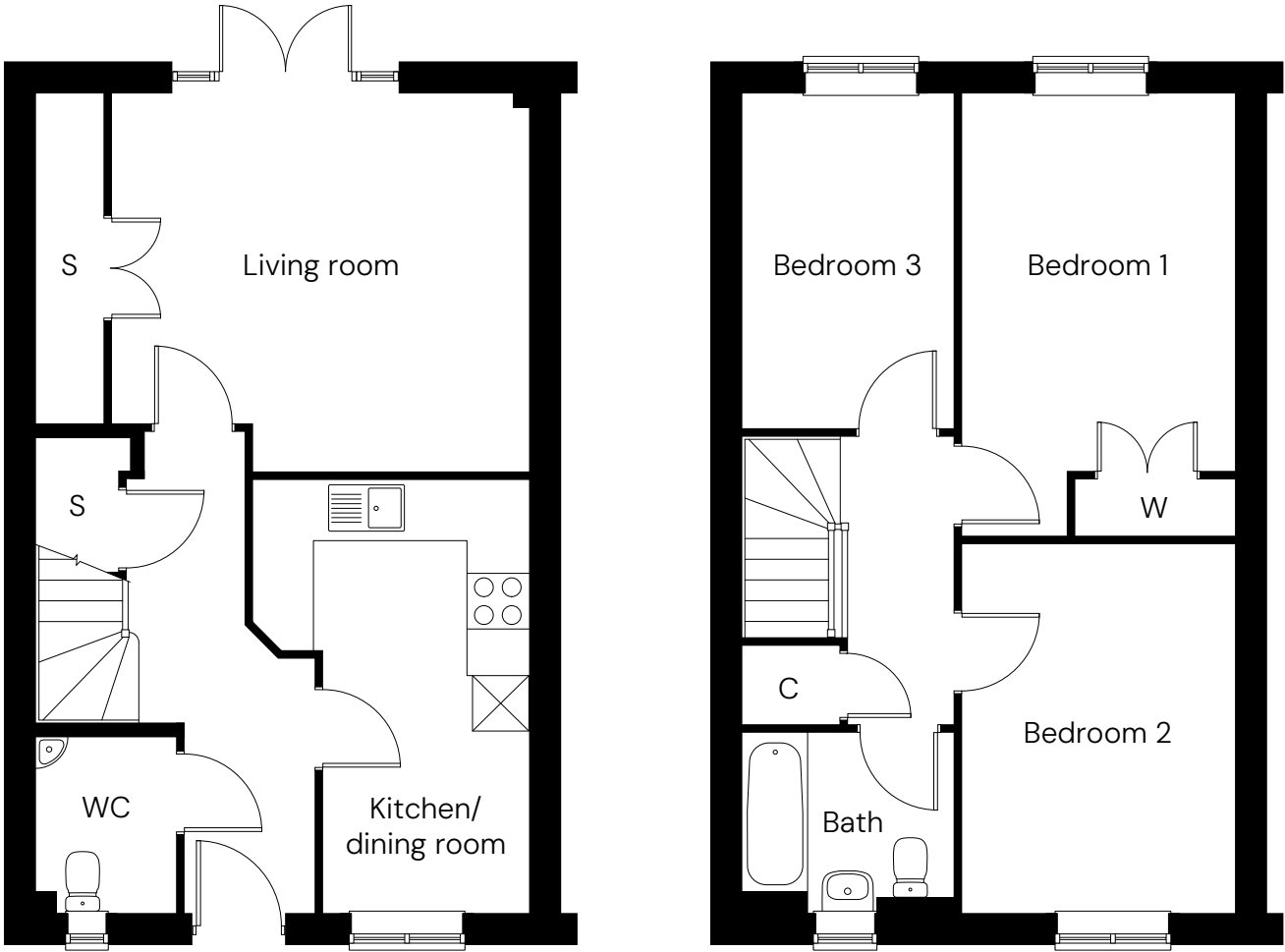
Hayfield Heights

The Elm

3 bedroom semi-detached
Plot 8

3  1  2 

Room	
Kitchen/dining room	3.0m x 4.7m
Living room	4.5m x 4.1m
Bedroom 1	3.0m x 4.1m
Bedroom 2	3.0m x 4.0m
Bedroom 3	2.3m x 3.6m
Total area	93.1m ²



C Cylinder S Storage W Wardrobe







Floor plan for illustration purposes only and not to scale. Dimensions are maximum and for general guidance, not suitable for furniture, appliances, or carpet sizing.

Hayfield Heights

Site plan

North



-  **The Elm**
3 bedroom semi-detached
-  **The Cedar**
2 bedroom bungalow
-  **The Maple**
2 bedroom semi-detached
-  **Parking spaces**
-  **Air source heat pump**
-  **EV charging point**

Site layout and landscaping is indicative only and subject to change.

