

Hayfield Heights **The Cedar**

2 bedroom bungalow




Computer generated image for illustration purposes only. Finishes and materials used may be subject to change.



Hayfield Heights

The Cedar

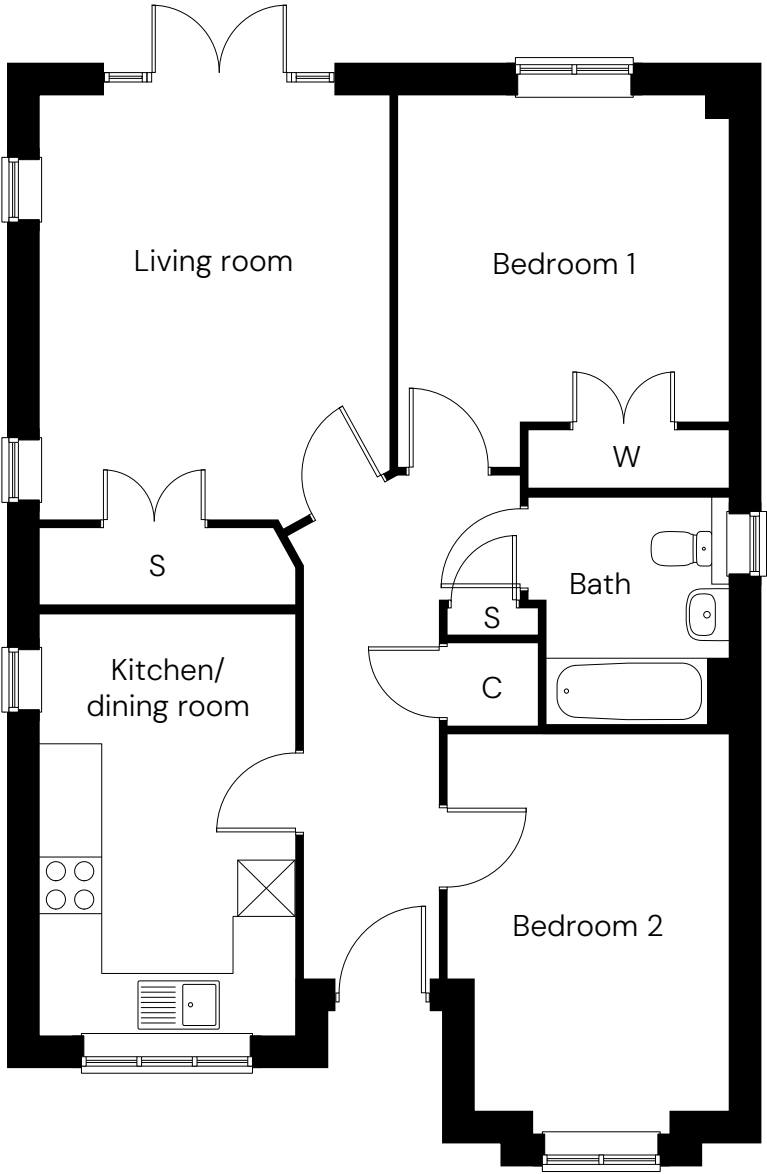
2 bedroom bungalow
Plot 12

2  1  2 

Room	
Kitchen/dining room	2.7m x 4.5m
Living room	3.7m x 4.5m
Bedroom 1	3.5m x 3.5m
Bedroom 2	3.0m x 4.0m
Total area	73.6m²

C Cylinder S Storage W Wardrobe

Floor plan for illustration purposes only and not to scale. Dimensions are maximum and for general guidance, not suitable for furniture, appliances, or carpet sizing.









Hayfield Heights

Site plan

North



-  **The Elm**
3 bedroom semi-detached
-  **The Cedar**
2 bedroom bungalow
-  **The Maple**
2 bedroom semi-detached
-  **Parking spaces**
-  **Air source heat pump**
-  **EV charging point**

Site layout and landscaping is indicative only and subject to change.

