

# Donnington Place

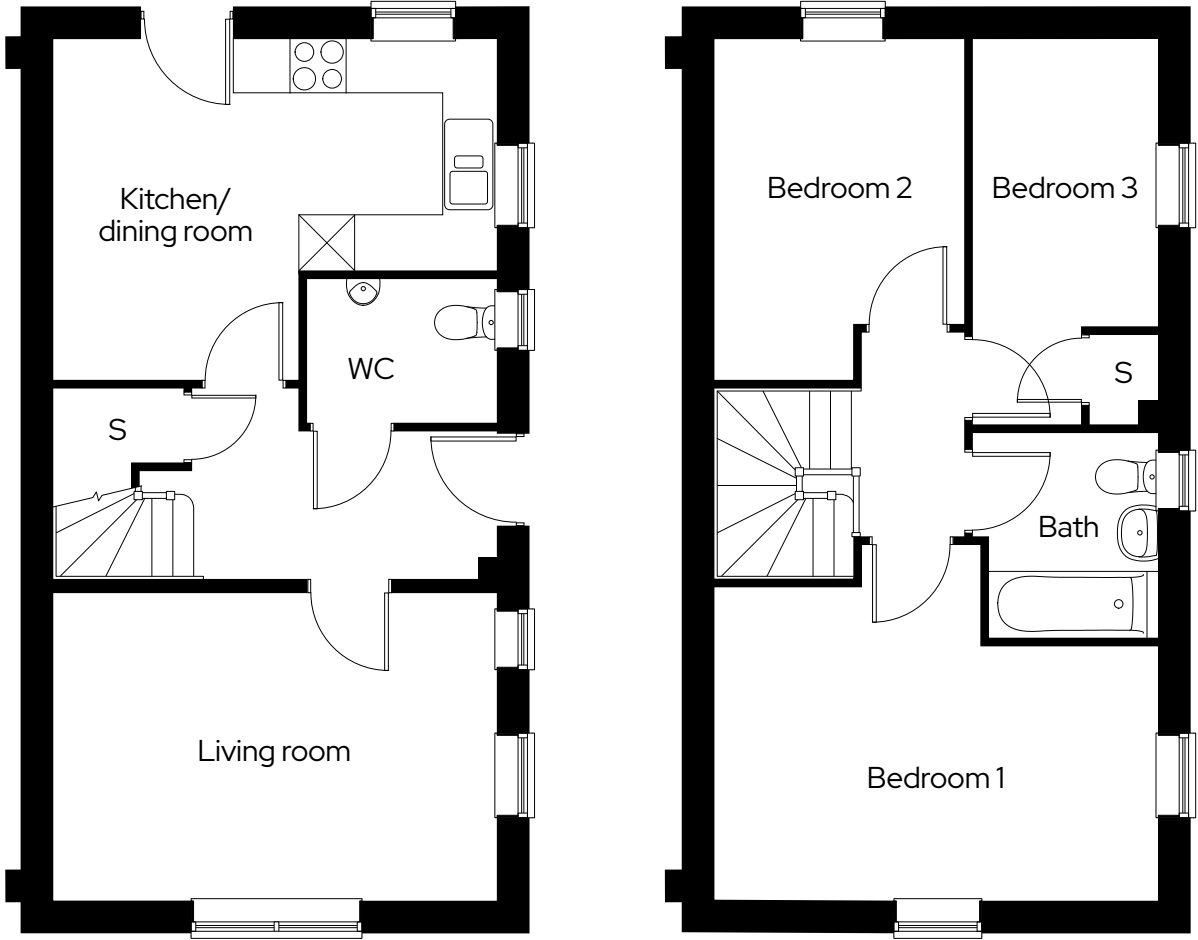
## The Stockcross

3 bedroom end terraced  
Plot 219\*, 222

3  1  2† 

**Room**

Kitchen/dining room	4.8m x 3.7m
Living room	4.8m x 3.4m
Bedroom 1	4.8m x 3.4m
Bedroom 2	2.7m x 3.7m
Bedroom 3	2.0m x 4.2m






\* Mirrored plot † Plot 219 has 3 parking spaces S Storage

Dimensions provided are for general guidance and are not intended to be used for carpet sizes, appliances, spaces or items of furniture. All dimensions are maximum.

# Donnington Place

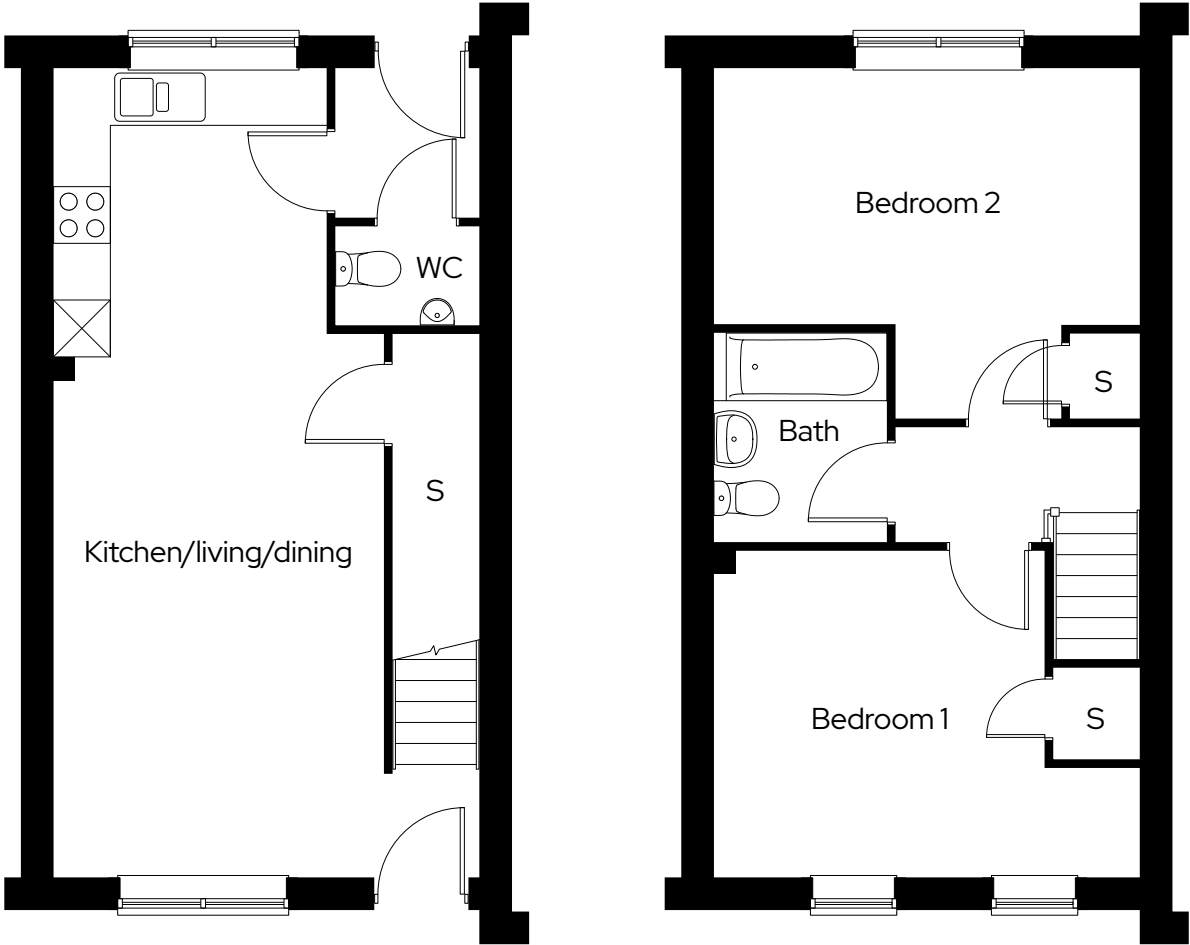
## The Snelsmore

2 bedroom mid terraced  
Plot 220\*, 221

2  1  2 

Room

Kitchen/living/dining	4.6m x 8.6m
Bedroom 1	4.6m x 3.5m
Bedroom 2	4.6m x 3.7m



\* Mirrored plot    S Storage

Dimensions provided are for general guidance and are not intended to be used for carpet sizes, appliances, spaces or items of furniture. All dimensions are maximum. Some storage areas may be compromised where bulkheads affect cupboard space.

# Donnington Place

## Site plan



-  **The Stockcross**  
3 bedroom end terraced
-  **The Snelsmore**  
2 bedroom mid terraced
-  **Parking spaces**
-  **Shed**

Site layout and landscaping is indicative only and subject to change.

