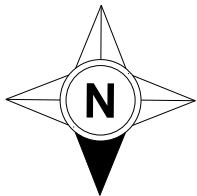
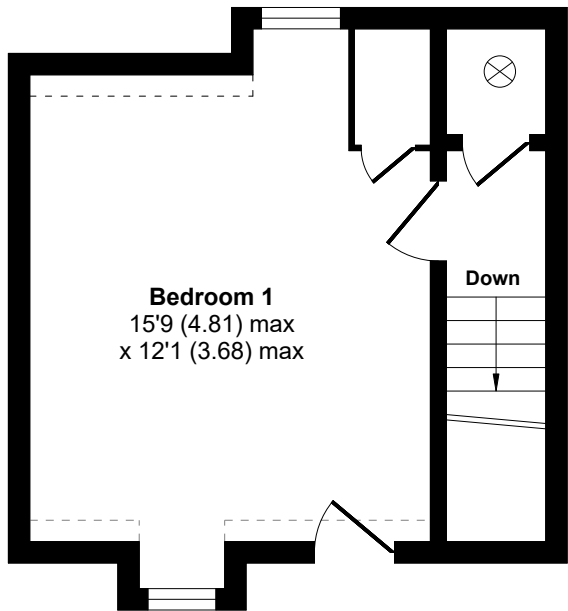


School Lane, Wixams, Bedford, MK42

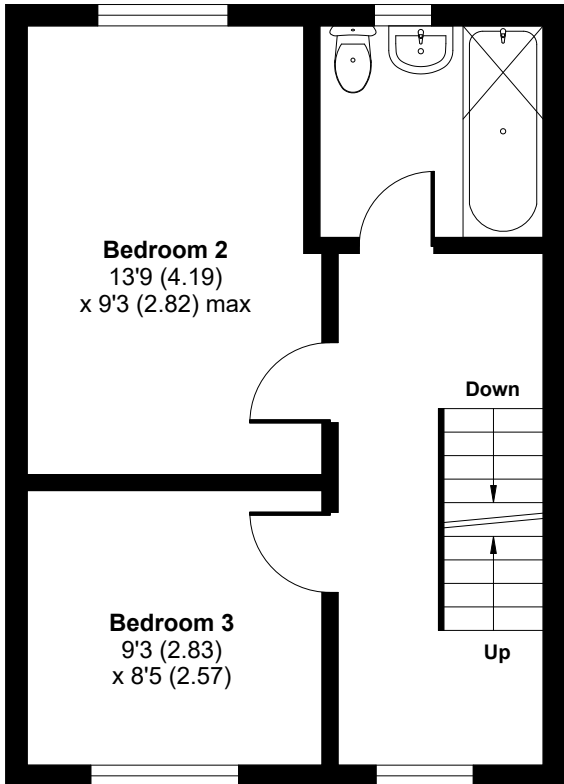
Approximate Area = 996 sq ft / 92.5 sq m
Limited Use Area(s) = 11 sq ft / 1 sq m
Total = 1007 sq ft / 93.5 sq m
For identification only - Not to scale



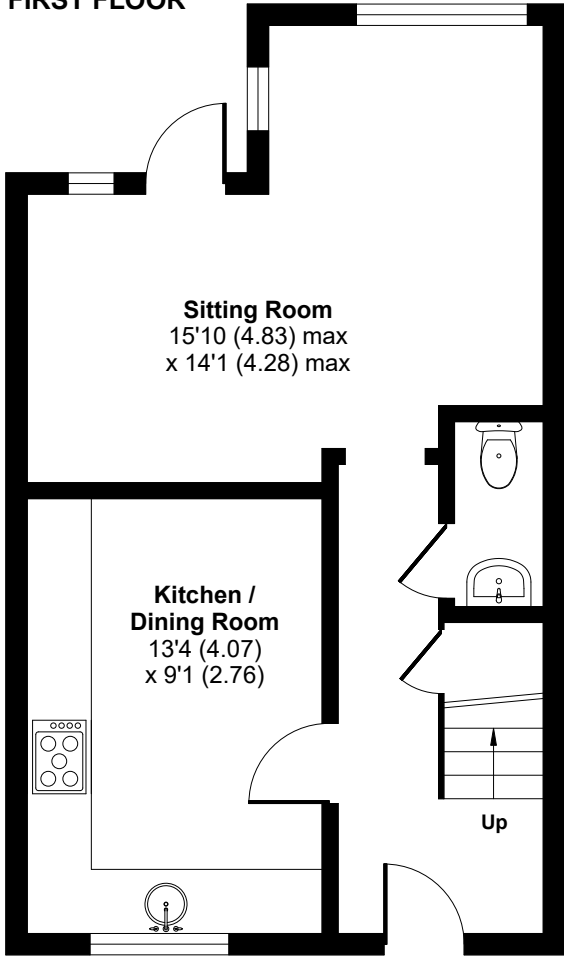
Denotes restricted
head height



SECOND FLOOR



FIRST FLOOR



GROUND FLOOR

