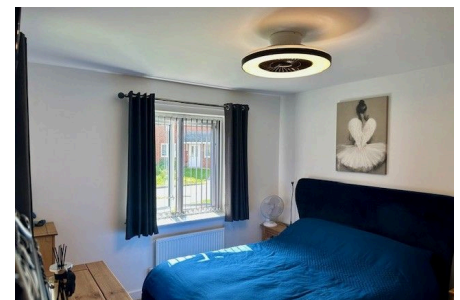
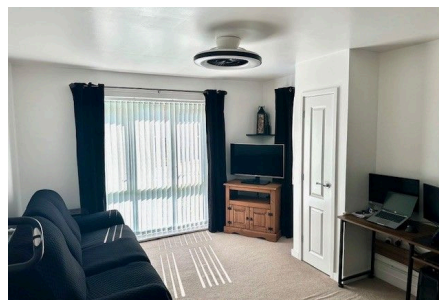
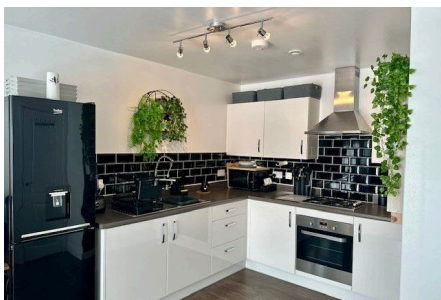


### 3 Yarrow Place, Stone Cross

Fixed Price £190,000

1 1 1



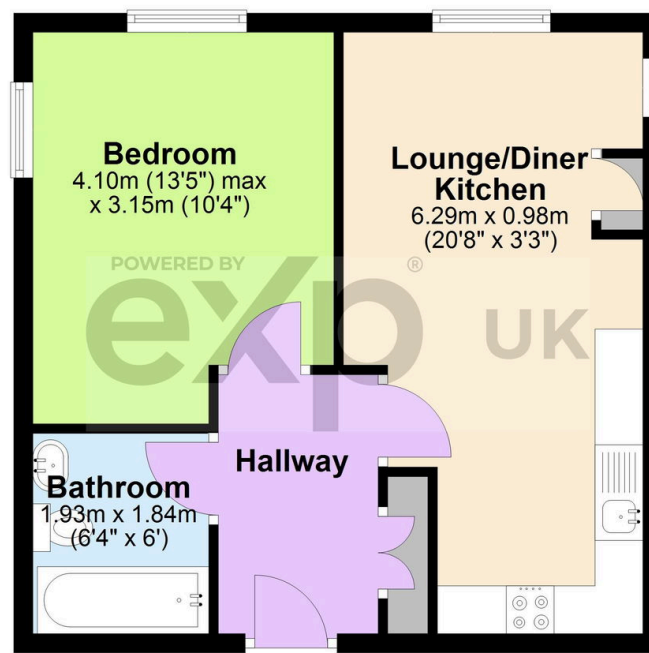
A great opportunity for a first time buyer to purchase this one bedroom ground floor shared ownership apartment in a popular area in Stone Cross, Pevensey. The apartment is extremely well presented comprising of double bedroom, open plan lounge/dining/kitchen, bathroom and allocated parking. All initial enquiries will need to complete an initial affordability assessment for the share available and a shared eligibility to check you meet their Housing Associations criteria, prior to booking a viewing.

## Key Features

- REF KW0865
- Share Price £66,500
- Open Plan Lounge/Dining/Kitchen
- Rent & Service Charge £427.41
- All applications require initial shared ownership and eligibility check
- Shared Ownership Ground Floor Flat
- One Double Bedroom
- Allocated Parking
- Leasehold 125 years from 2018
- Close to local amenities & train station

### Ground Floor

Approx. 39.8 sq. metres (428.8 sq. feet)



Total area: approx. 39.8 sq. metres (428.8 sq. feet)

Dimensions are for illustrative purposes only. No responsibility is accepted for any errors.  
Plan produced using PlanUp.