

# Hartsdown Gardens

## The Frampton 3 bedroom house

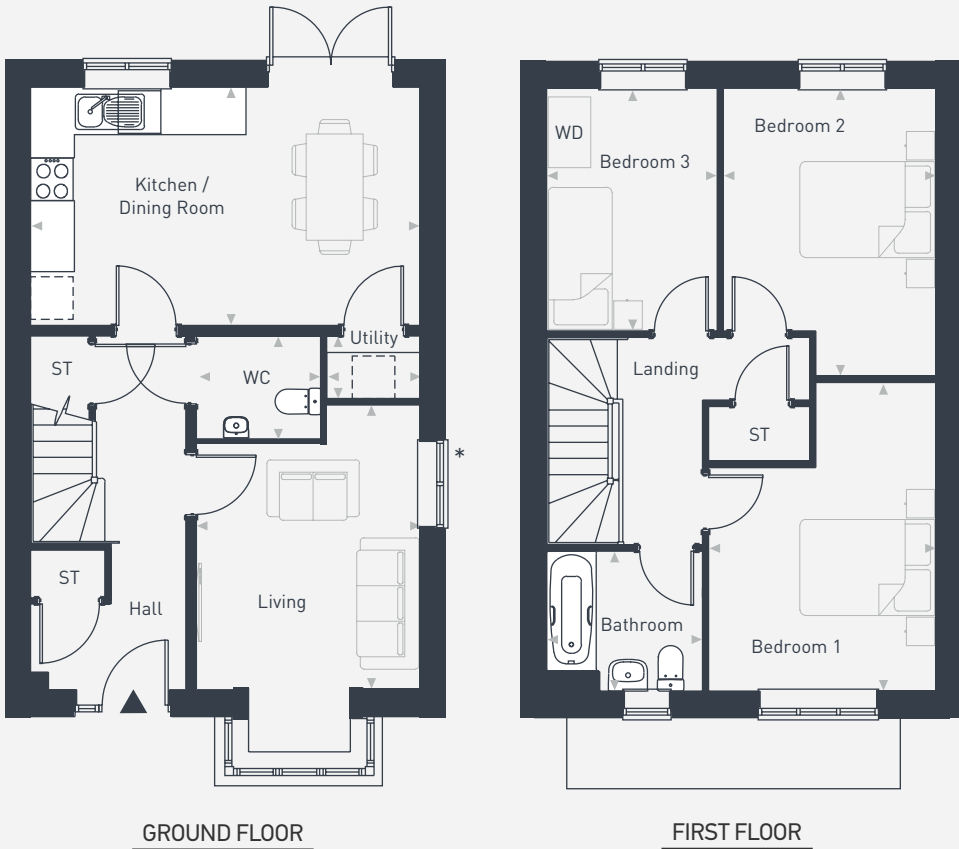


Hartsdown  
Gardens

The Frampton  
3 bedroom house

Plots as drawn: 29, 31, 71, 103 and 107  
Handed: 28, 30 and 62\*  
\*Only Plot 62 has this window

94.83 sq.m / 1020 sq.ft



DIMENSIONS	m	ft
Kitchen/Dining	5.55m x 3.41m	18'3" x 11'2"
Living	4.04m x 3.21m	13'3" x 10'7"
WC	1.79m x 1.45m	5'10" x 4'9"
Utility	1.36m x 0.94m	4'6" x 3'1"

DIMENSIONS	m	ft
Bedroom 1	4.39m x 3.35m	14'5" x 10'8"
Bedroom 2	4.10m x 3.04m	13'5" x 10'0"
Bedroom 3	3.46m x 2.44m	11'4" x 8'0"
Bathroom	2.24m x 2.01m	7'4" x 6'7"



placesforpeople.co.uk/hartsdown-gardens  
Hartsdown Road, Margate, Kent CT9 5QZ

Please note: All layouts and floor plans, configurations, maps and information are intended for guidance only and accuracy of this information cannot be relied upon by prospective purchasers who must make their own enquiries to satisfy themselves by inspection or otherwise as to the correct detail.