

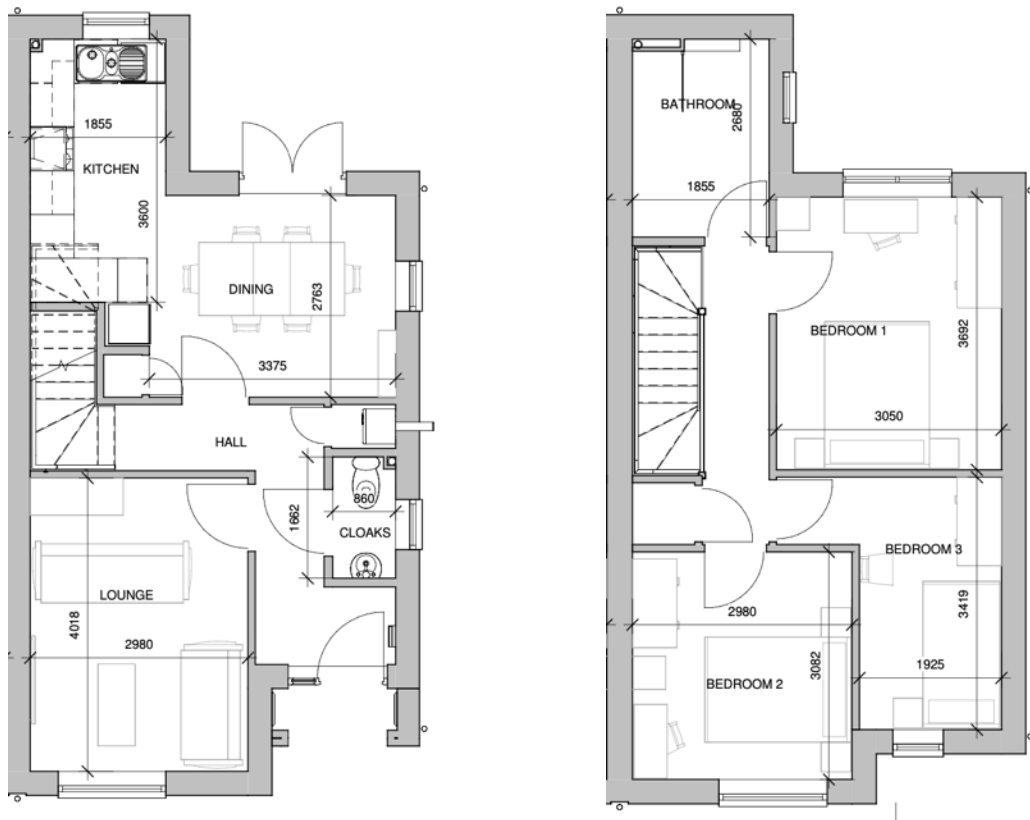


2 Baddesley Close, Middlemore, Daventry, NN11 8DB

Three-bedroom semi-detached house.

Available on the Rent to Buy scheme.

Three-Bedroom Semi-Detached House



Plans are not to scale

Room	Dimensions
Lounge	4.01m x 2.98m
Kitchen Area	3.60m x 1.85m
Dining Area	3.15m x 2.67m
Bedroom 1	3.69m x 3.05m
Bedroom 2	3.08m x 2.98m
Bedroom 3	3.42m x 1.92m

Due to the nature of construction, room sizes may vary.

Specification

- Fitted Kitchen with built in hob, oven and extractor
- Fitted carpets
- Vinyl floor to kitchen, cloakroom and bathroom
- Gas central heating with energy efficient combi boiler
- Double glazing
- Enclosed and turfed rear garden
- Fitted blinds (Please note that the repair of these will be the responsibility of the new occupier)
- Off-road parking for two vehicles



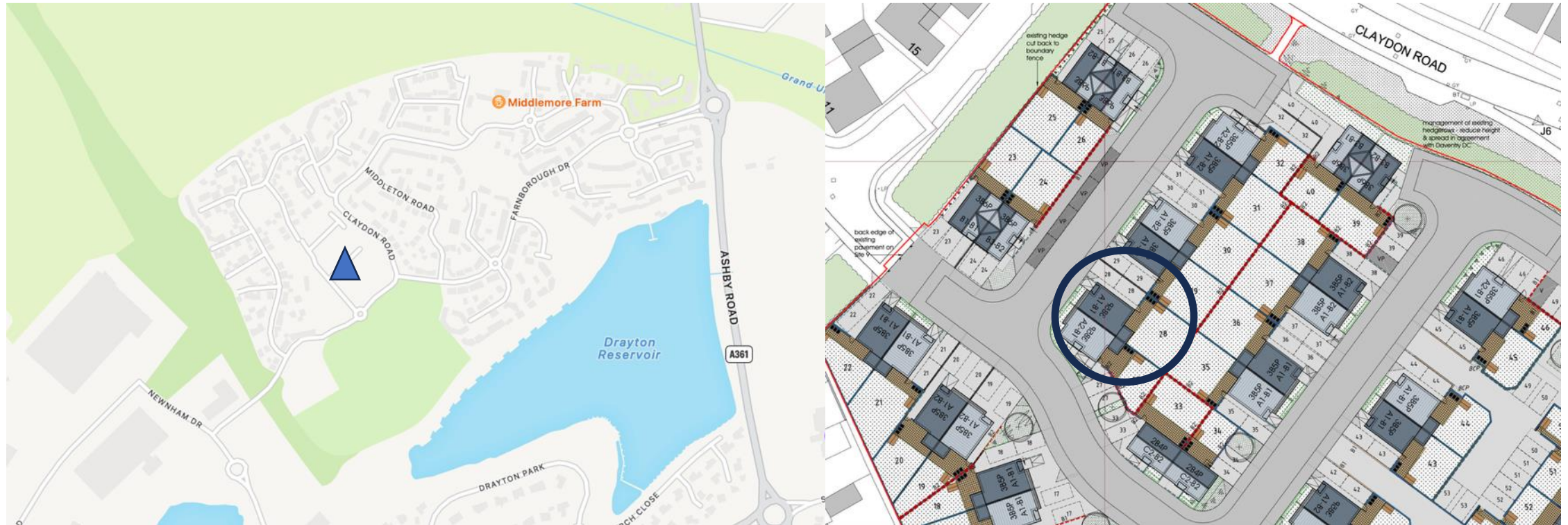




Rear Garden

Please note that the wooden decking and shed have been installed by the previous occupier and will not be maintained or repaired by Futures Housing Group.

Location



For plot location purposes only. Not to scale

To find out more contact us:



Telephone: 0300 11 33 701

Email: contactus@sharedownership-shop.co.uk

Website: sharedownership-shop.co.uk

Maps are correct at time of going to print according to Google Maps. Floorplans show approximate measurements only. The dimensions are not intended to be used for carpet sizes, appliance sizes or items of furniture. Floorplans have been sized to fit the page, as a result, are not drawn to scale. The details in this brochure should not be relied upon and are for guidance purposes only and remain subject to change without prior notice. Consequently, these particulars cannot be relied upon as accurately describing any of the Specified Matters prescribed by any Order made under the Consumer Protection from Unfair Trading Regulations 2008. Nor do they constitute a contract, part of a contract or a warranty. Details correct at time of going to print. August 2025.