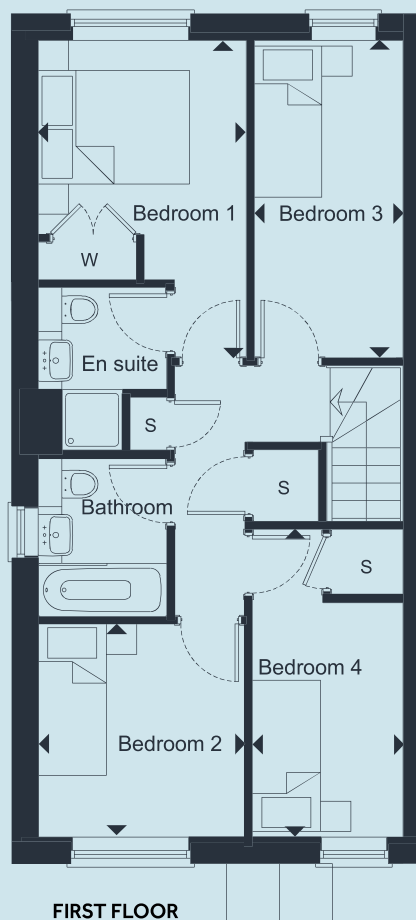
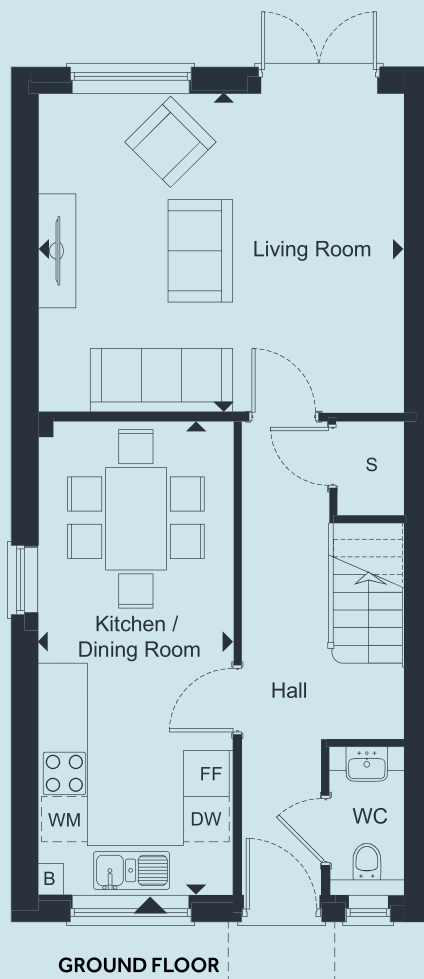


Four bedroom houses 7 & 8* Oakley Close

*8 Oakley Close is handed from the plans drawn



LIVING ROOM

4.82m x 4.19m 15'10" x 13'9"

KITCHEN / DINING ROOM

6.24m x 2.57m 20'5" x 8'5"

BEDROOM 1

3.17m x 2.75m 10'5" x 9'0"

BEDROOM 2

2.82m x 2.73m 9'3" x 9'0"

BEDROOM 3

4.20m x 1.97m 13'9" x 6'6"

BEDROOM 4

3.10m x 1.99m 10'2" x 6'6"

TOTAL AREA

101.6 sq.m. 1093.2 sq.ft.

FF FRIDGE/FREEZER

DW DISHWASHER

W WARDROBE

S STORAGE

WM WASHING MACHINE

B BOILER

► Denotes points between the measurements shown



This floor plan is for illustrative purposes and dimensions should only be used as rough guide. External area sizes and locations may differ from those illustrated. Location of windows, doors, bathroom fittings, kitchen units and appliances may differ. Whilst every effort has been taken to ensure the accuracy of the specification, it is for general guidance only and is subject to change. Southern Housing reserves the right to amend the specification as necessary and without notice. Speak to our sales team for more details.