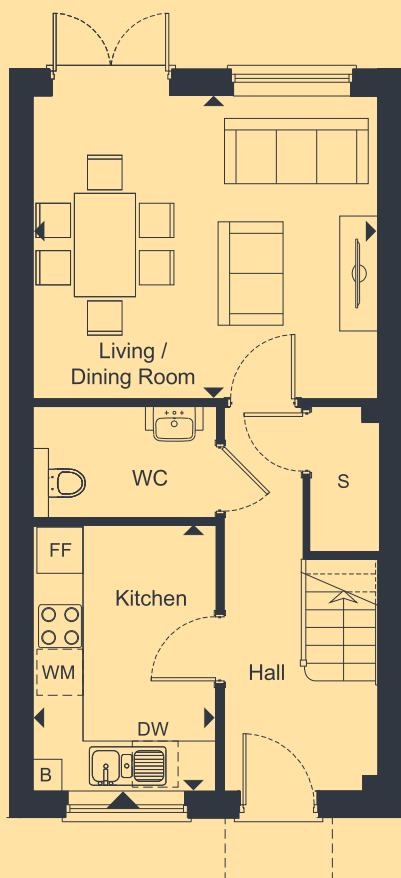


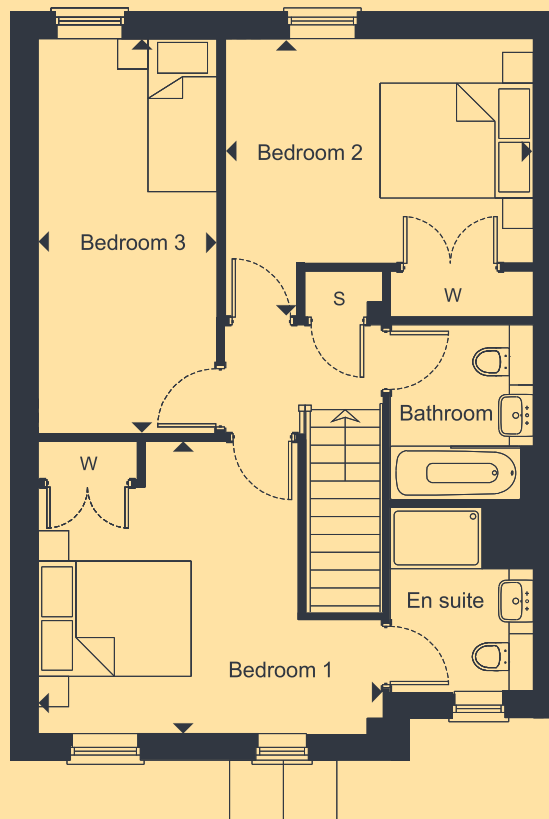
Three bedroom houses

4 & 5* Oakley Close and 4* & 5 Pringle Close

* 5 Oakley Close & 4 Pringle Close are handed from the plans drawn



GROUND FLOOR



FIRST FLOOR

LIVING / DINING ROOM

4.50m x 3.95m 14'9" x 13'0"

KITCHEN

3.47m x 2.39m 11'5" x 7'10"

BEDROOM 1

4.50m x 3.82m 14'9" x 12'6"

BEDROOM 2

4.02m x 2.94m 13'2" x 9'8"

BEDROOM 3

5.16m x 2.34m 16'11" x 7'8"

TOTAL AREA

98.4 sq.m. 1058.8 sq.ft.

FF FRIDGE/FREEZER

DW DISHWASHER

W WARDROBE

► Denotes points between the measurements shown

S STORAGE

WM WASHING MACHINE

B BOILER



This floor plan is for illustrative purposes and dimensions should only be used as rough guide. External area sizes and locations may differ from those illustrated. Location of windows, doors, bathroom fittings, kitchen units and appliances may differ. Whilst every effort has been taken to ensure the accuracy of the specification, it is for general guidance only and is subject to change. Southern Housing reserves the right to amend the specification as necessary and without notice. Speak to our sales team for more details.