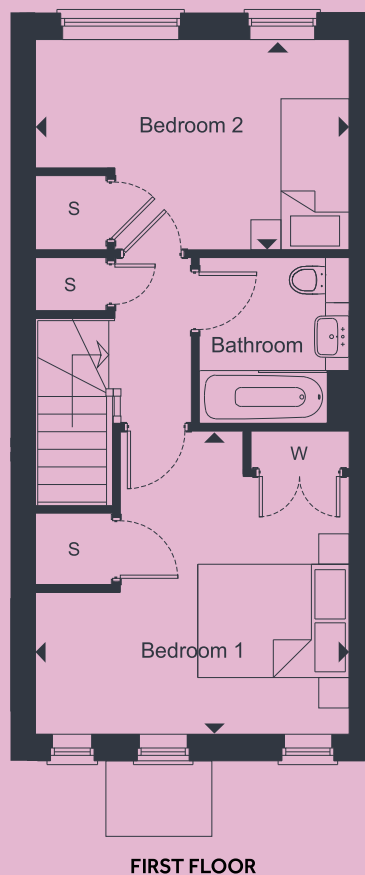
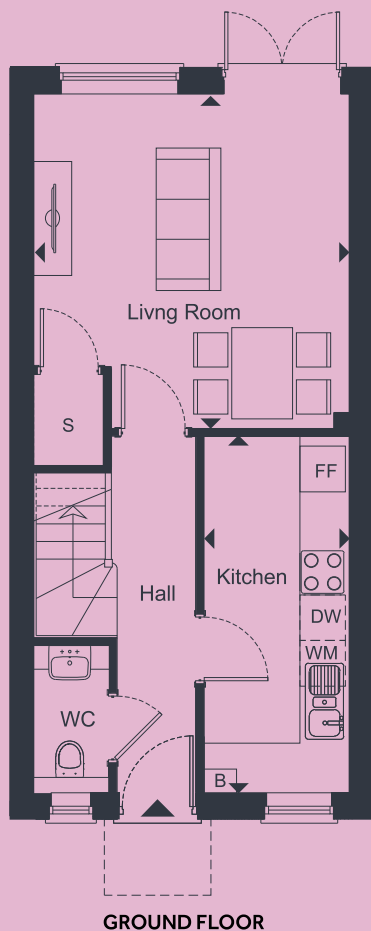


Two bedroom houses 2 & 3* Pringle Close

* 3 Pringle Close is handed from the plans drawn



LIVING / DINING ROOM		
4.15m x 4.40m	13'7" x 14'5"	
KITCHEN		
4.69m x 1.91m	15'5" x 6'3"	
BEDROOM 1		
4.15m x 4.01m	13'7" x 13'2"	
BEDROOM 2		
4.15m x 2.78m	13'7" x 9'1"	
TOTAL AREA		
76.2 sq.m.	819.9 sq.ft.	

FF FRIDGE/FREEZER **S** STORAGE
DW DISHWASHER **WM** WASHING MACHINE
W WARDROBE **B** BOILER
 ▶ Denotes points between the measurements shown



This floor plan is for illustrative purposes and dimensions should only be used as rough guide. External area sizes and locations may differ from those illustrated. Location of windows, doors, bathroom fittings, kitchen units and appliances may differ. Whilst every effort has been taken to ensure the accuracy of the specification, it is for general guidance only and is subject to change. Southern Housing reserves the right to amend the specification as necessary and without notice. Speak to our sales team for more details.