

The Willow

The Woodlands at Halsnead Garden Village



Three-bedroom home, sleeps five

3 |

2 |

1 |



Artist's impression

Key features

- Two double bedrooms
- Downstairs W.C.
- En-suite to master bedroom
- Open plan kitchen and dining room
- Separate living room
- Driveway parking

Lickers Lane, Whiston, L35 3PW

A stunning collection of 158 beautifully designed new homes



The Willow

Available plots

Shared ownership

40, 53, 54, 59, 60, 61, 105, 115, 120, 124, 131, 132, 133, 134, 144, 145, 146, 147, 160, 161, 162, 163, 168

Rent to Buy

39, 45, 46, 64, 112, 114, 117, 119, 167

Disclaimer: This document is a guide to the above development. The illustrations do not bind or imply the layout and specification will be as indicated. Please request a full development specification from the team. Correct at time of printing (March 2025). End terraces will have additional windows in some circumstances. The Willow sales units do not have gable end windows. Please check the specific plot with an advisor.

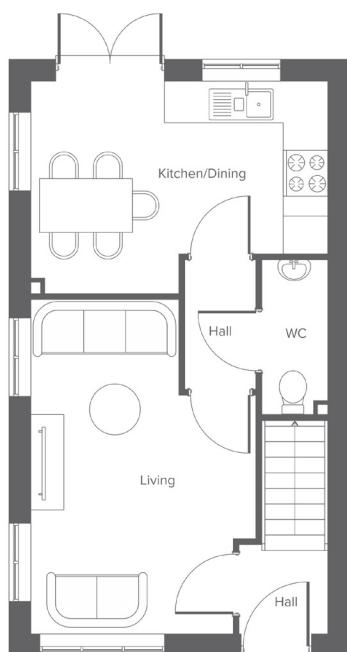
The Willow

The Woodlands at Halsnead Garden Village

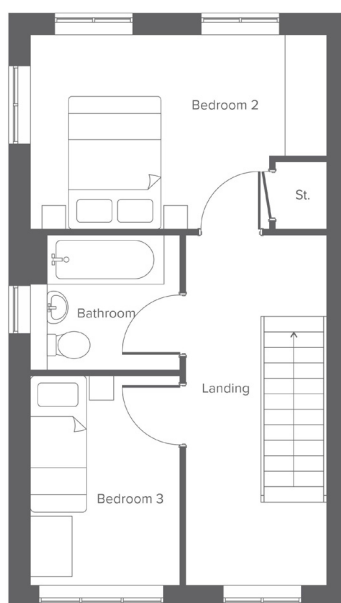


Three-bedroom home, sleeps five

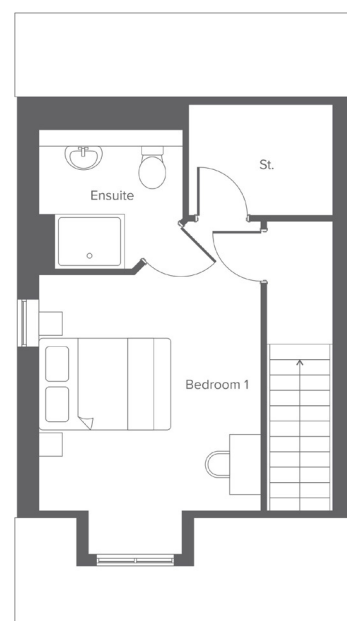
Ground floor



First floor



Second floor



Room	Metric	Imperial
Kitchen/Dining	4.29 x 3.10	14'0" x 10'2"
Living	3.28 x 4.88	10'9" x 16'0"
W.C.	0.98 x 2.26	3'2" x 7'4"

Room	Metric	Imperial
Bedroom 2	4.33 x 2.85	14'2" x 9'4"
Bedroom 3	2.20 x 3.08	7'2" x 10'1"
Bathroom	2.20 x 1.98	7'2" x 6'5"

Room	Metric	Imperial
Bedroom 1	4.33 x 4.28	14'2" x 14'0"
En-suite	2.13 x 2.06	6'11" x 6'9"

Total size **92.58m² / 996.52 ft²**

Get in touch



0151 808 1768



yourhousinggroup.co.uk



@yourhousing



yourhousinggroup