

**Prices**  
*from*  
**£135,625**

# Whitehouse Park

Ouessant Close, Whitehouse, Milton Keynes

A brand new development of apartments and houses

**//////** ParadigmLiving



£ Prices from **£135,625 (35% share)**

% Share available 40%-70%

🛏 3 & 4 bedrooms



*We are pleased to offer these 3 and 4 bedroom houses available through Shared Ownership, located in Whitehouse Park, Milton Keynes.*



## Whitehouse Park KEY FEATURES

Bathroom suite and thermostatic shower

Carpet throughout living areas

Amtico flooring in kitchen, bathroom & downstairs toilet

Gas central heating

Allocated parking

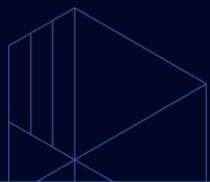
Fitted kitchen with integrated oven and hob

Washer/Dryer and fridge freezer

Enclosed private garden

These particulars do not constitute any part of an offer or contract. Any intended purchasers must satisfy themselves as to the correctness of each of the statements contained in these particulars. All floor layouts may be subject to changes. The dimensions given on the plan are subject to minor variations intended for guidance only and are not to be used for carpets, appliances or items of furniture.





## Three Bedroom House

Plots 156\*, 157

(\* handed)

### KITCHEN/DINING

9'8" x 11'8" 2.95m x 3.57m

### LIVING ROOM

16'6" x 11'0" 5.03m x 3.36m

### BEDROOM 1

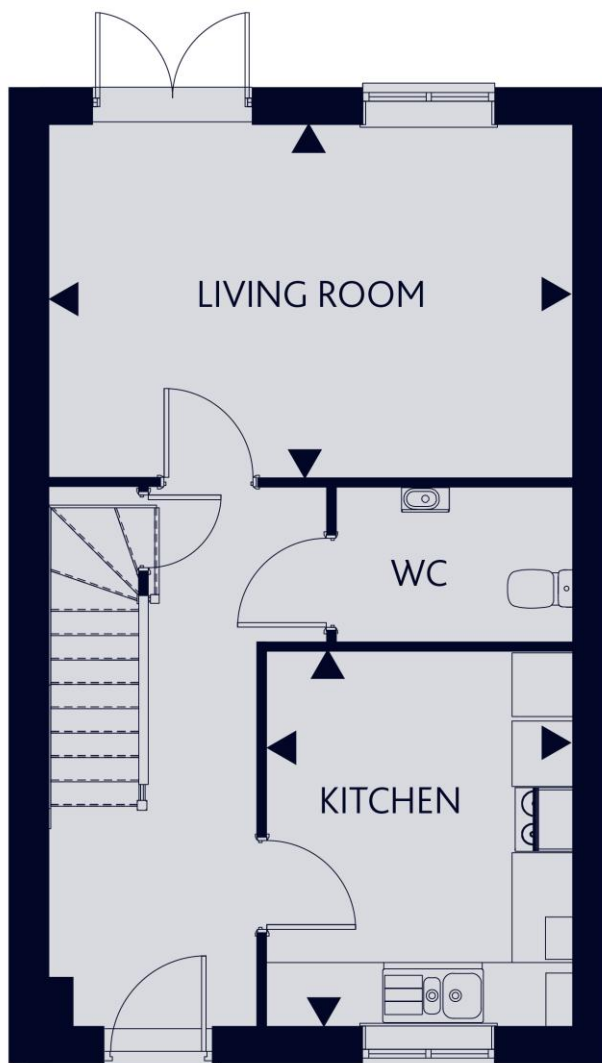
9'1" x 16'6" 2.77m x 5.04m

### BEDROOM 2

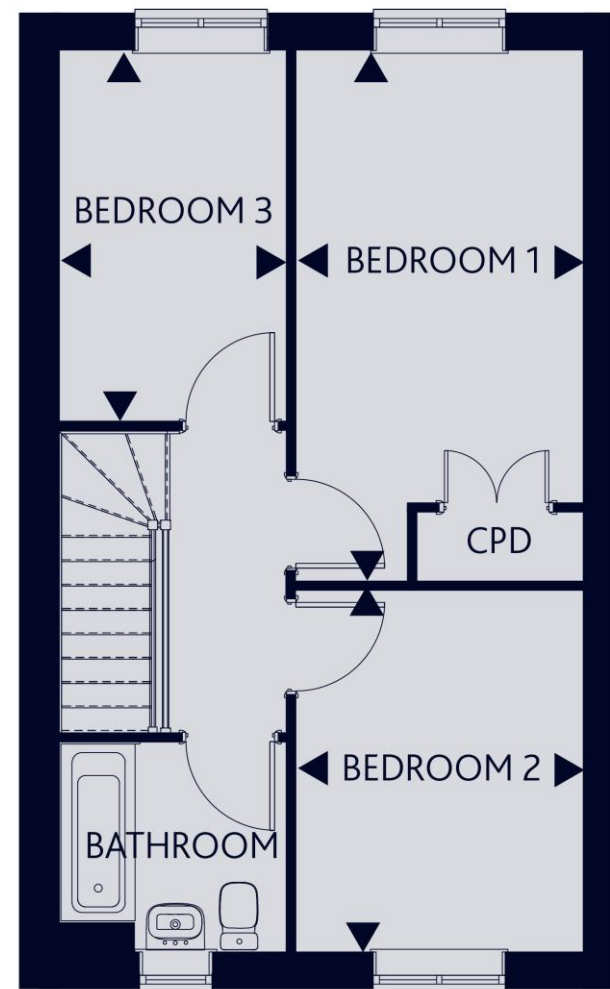
9'1" x 11'3" 2.77m x 3.45m

### BEDROOM 3

7'1" x 11'6" 2.18m x 3.53m



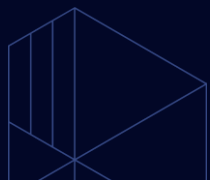
GROUND FLOOR



FIRST FLOOR

These particulars do not constitute any part of an offer or contract. Any intended purchasers must satisfy themselves as to the correctness of each of the statements contained in these particulars. All floor layouts may be subject to changes. The dimensions given on the plan are subject to minor variations intended for guidance only and are not to be used for carpets, appliances or items of furniture.





## Four Bedroom House

Plots 158\*, 159\*, 160

(\* handed)

### KITCHEN/DINING

19'0" x 10'10" 5.81m x 3.32m

### LIVING ROOM

12'3" x 11'7" 3.75m x 3.55m

### BEDROOM 1

10'10" x 12'11" 3.32m x 3.95m

### BEDROOM 2

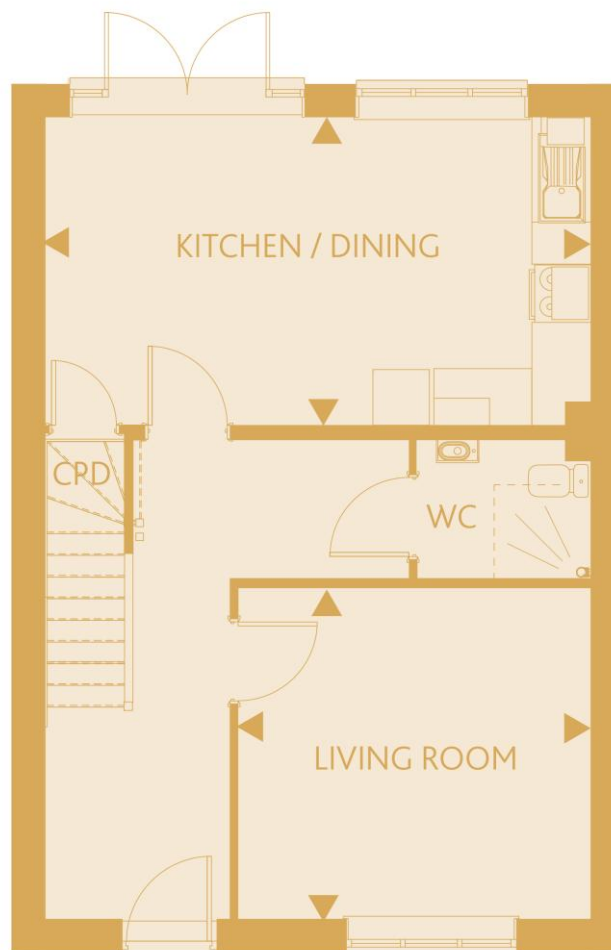
11'3" x 7'4" 3.44m x 2.24m

### BEDROOM 3

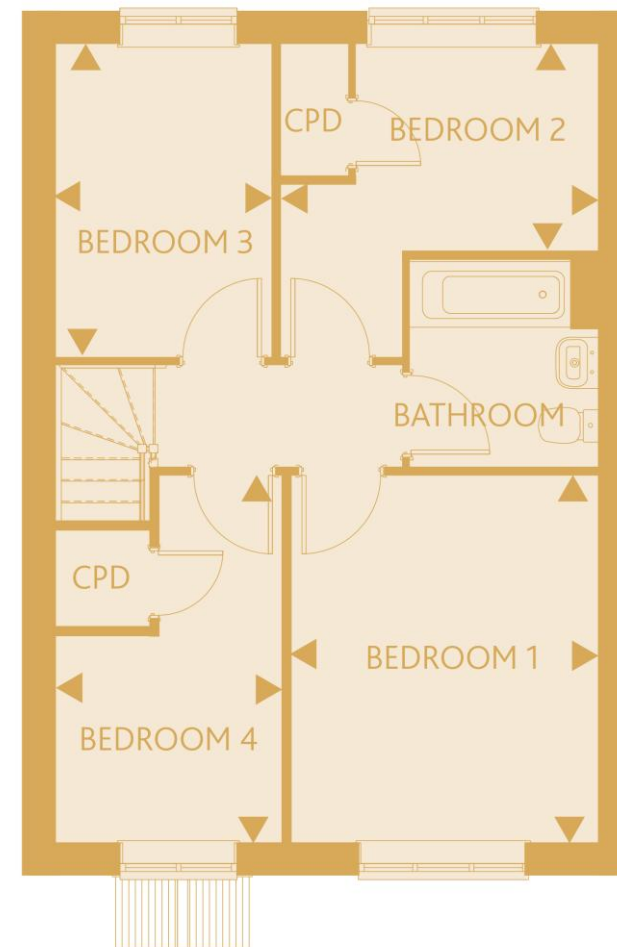
7'6" x 11'0" 2.30m x 3.36m

### BEDROOM 4

7'11" x 12'11" 2.42m x 3.95m



GROUND FLOOR



FIRST FLOOR

These particulars do not constitute any part of an offer or contract. Any intended purchasers must satisfy themselves as to the correctness of each of the statements contained in these particulars. All floor layouts may be subject to changes. The dimensions given on the plan are subject to minor variations intended for guidance only and are not to be used for carpets, appliances or items of furniture.





Rented properties



Shared ownership properties

These particulars do not constitute any part of an offer or contract. Any intended purchasers must satisfy themselves as to the correctness of each of the statements contained in these particulars. All floor layouts may be subject to changes. The dimensions given on the plan are subject to minor variations intended for guidance only and are not to be used for carpets, appliances or items of furniture.



For more information

0300 303 8046

[www.paradigmliving.co.uk](http://www.paradigmliving.co.uk)

These particulars do not constitute any part of an offer or contract. Any intended purchasers must satisfy themselves as to the correctness of each of the statements contained in these particulars. All floor layouts maybe subject to changes. The dimensions given on the plan are subject to minor variations intended for guidance only and are not be used for carpets, appliances or items of furniture.

