

Prices  
*from*  
**£165,000**

# Whitehouse Park

Wiltipoll Crescent, Whitehouse, Milton Keynes

A brand new development of 2, 3 & 4 bedroom houses

**////** ParadigmLiving



CONSUMER  
CODE FOR  
HOME BUILDERS  
[www.consumercode.co.uk](http://www.consumercode.co.uk)

REGISTER NOW & ACTIVATE YOUR FREE GUARANTEE  
0800 032 8936  
1 800 814 520



£ Prices from **£132,000 (40% share)**

% Share available 50%-70%

🛏 2 & 3 bedrooms



## Whitehouse Park KEY FEATURES

Bathroom suite and thermostatic shower

Carpet throughout living areas

Amtico flooring in kitchen, bathroom & downstairs toilet

Gas central heating

Allocated parking

Fitted kitchen with integrated oven and hob

Washer/dryer and fridge freezer

Enclosed Private Garden

*We are pleased to offer these 2 and 3 bedroom houses available through Shared Ownership, located in Whitehouse Park, Milton Keynes.*



These particulars do not constitute any part of an offer or contract. Any intended purchasers must satisfy themselves as to the correctness of each of the statements contained in these particulars. All floor layouts maybe subject to changes. The dimensions given on the plan are subject to minor variations intended for guidance only and are not to be used for carpets, appliances or items of furniture.



## Two Bedroom House

Plots 142, 143\*, 144 ,145\*  
(\* handed)

### KITCHEN/DINING

6'11" x 12'3" 2.13m x 3.74m

### LIVING ROOM

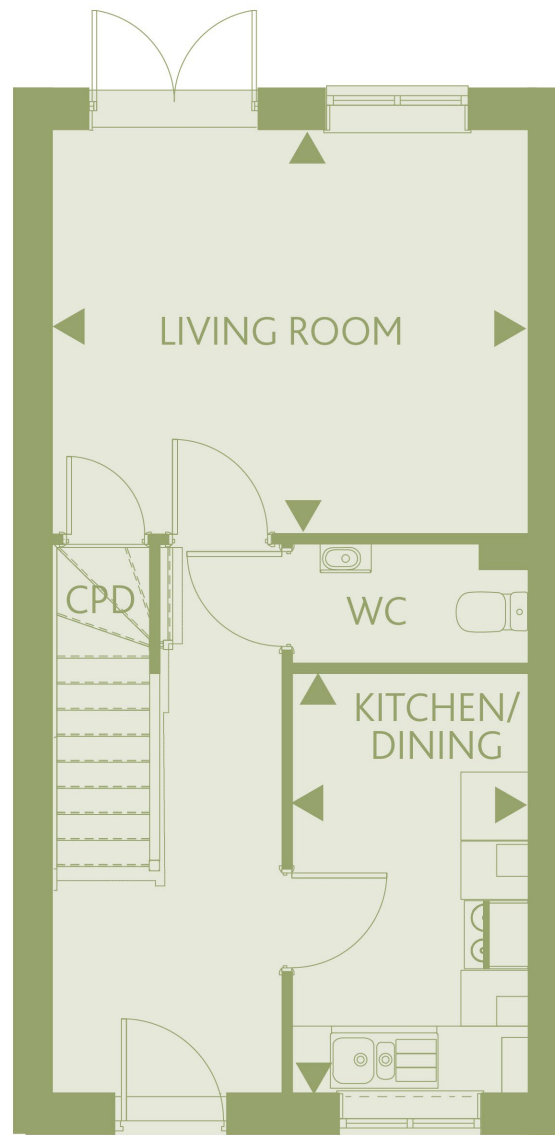
13'10" x 11'9" 4.24m x 3.60m

### BEDROOM 1

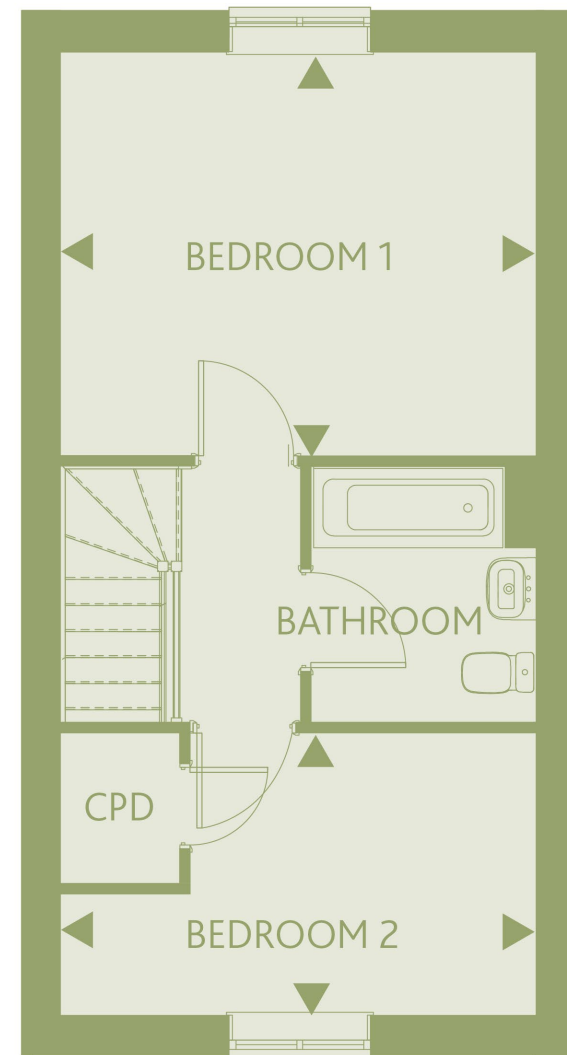
13'10" x 11'9" 4.24m x 3.60m

### BEDROOM 2

13'10" x 8'3" 4.24m x 2.52m



GROUND FLOOR



FIRST FLOOR

These particulars do not constitute any part of an offer or contract. Any intended purchasers must satisfy themselves as to the correctness of each of the statements contained in these particulars. All floor layouts may be subject to changes. The dimensions given on the plan are subject to minor variations intended for guidance only and are not to be used for carpets, appliances or items of furniture.





## Three Bedroom House

Plots 146,147,148\*

(\* handed)

### KITCHEN/DINING

9'8" x 11'8" 2.95m x 3.57m

### LIVING ROOM

16'6" x 11'0" 5.03m x 3.36m

### BEDROOM 1

9'1" x 16'6" 2.77m x 5.04m

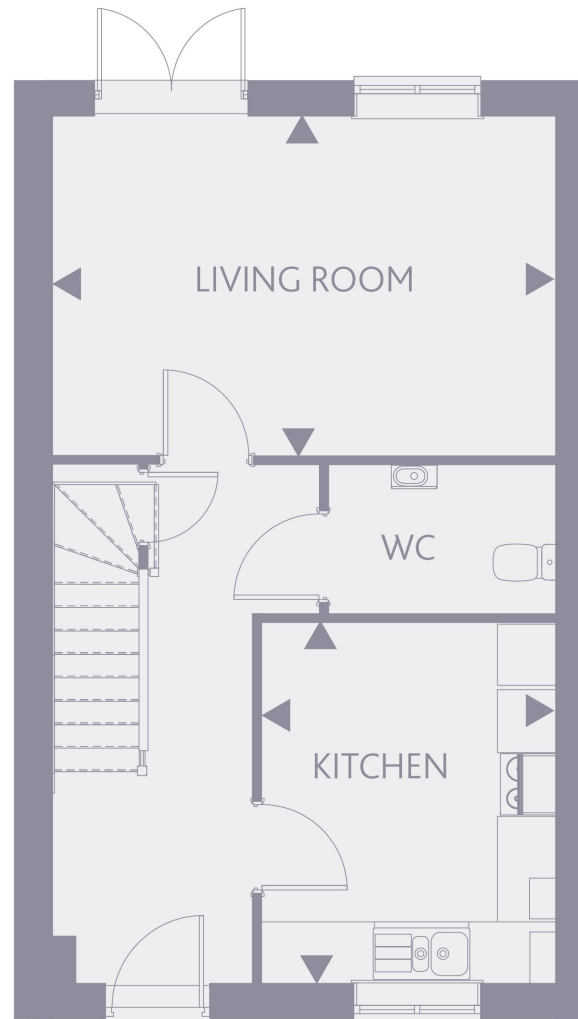
### BEDROOM 2

9'1" x 11'3" 2.77m x 3.45m

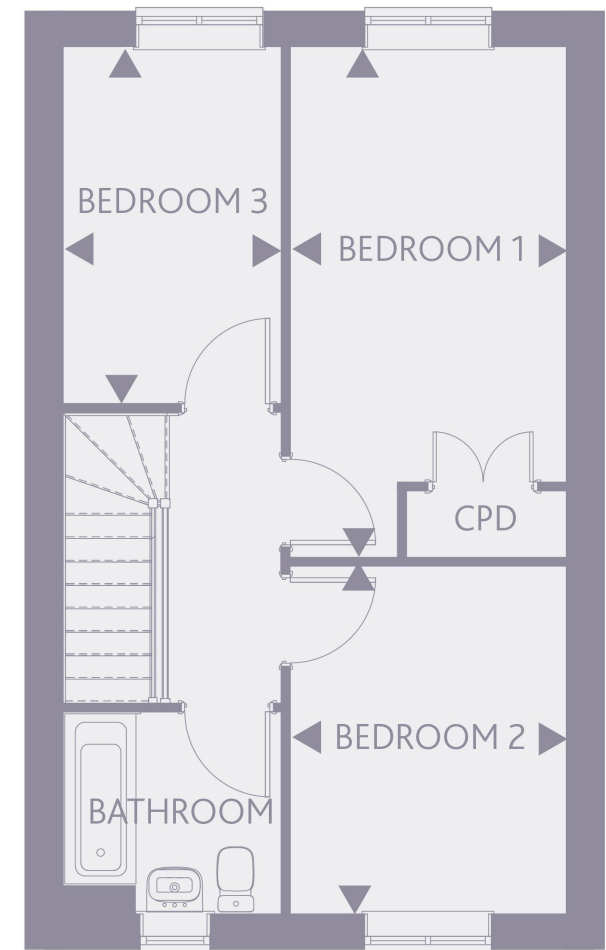
### BEDROOM 3

7'1" x 11'6" 2.18m x 3.53m

These particulars do not constitute any part of an offer or contract. Any intended purchasers must satisfy themselves as to the correctness of each of the statements contained in these particulars. All floor layouts may be subject to changes. The dimensions given on the plan are subject to minor variations intended for guidance only and are not to be used for carpets, appliances or items of furniture.





GROUND FLOOR



FIRST FLOOR





-  Rented properties
-  Shared ownership properties

These particulars do not constitute any part of an offer or contract. Any intended purchasers must satisfy themselves as to the correctness of each of the statements contained in these particulars. All floor layouts may be subject to changes. The dimensions given on the plan are subject to minor variations intended for guidance only and are not to be used for carpets, appliances or items of furniture.



For more information

0300 303 8046

[www.paradigmliving.co.uk](http://www.paradigmliving.co.uk)

These particulars do not constitute any part of an offer or contract. Any intended purchasers must satisfy themselves as to the correctness of each of the statements contained in these particulars. All floor layouts maybe subject to changes. The dimensions given on the plan are subject to minor variations intended for guidance only and are not be used for carpets, appliances or items of furniture.

