

1 Garden Drive - Floor Plan

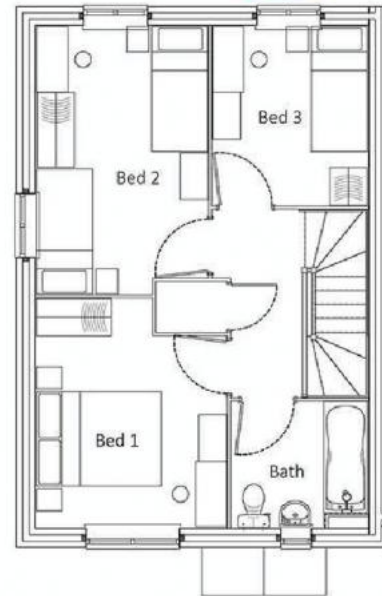
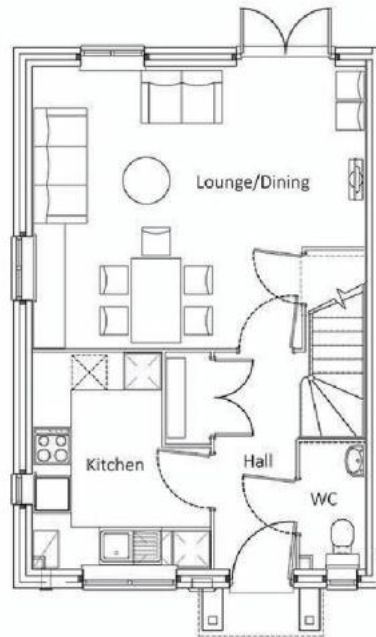
Plot 9

GROUND FLOOR

Hallway	2.45m x 3.50m
Kitchen	2.85m x 3.50m
Lounge/Dining	5.35m x 4.55m
WC	1.05m x 2.05m

FIRST FLOOR

Bathroom	2.20m x 2.05m
Bedroom 1	3.10m x 3.70m
Bedroom 2	2.80m x 4.30m
Bedroom 3	2.50m x 2.90m



Please note these plans are just a guide. They're not part of a contract or warranty or guarantee. The plans may not be exactly the same when they're built. Please allow a 10cm tolerance either way on each dimension of physically completed properties can differ from architect's initial plan. It is common for the position of fixtures and fittings to change during the build process, for example kitchen units, windows and radiators. If your home is a mirrored version of the one shown here, we will let you know. The property may also be a mirrored version of the one shown here. We strongly advise not to order any furniture or white goods, as we really cannot guarantee these dimensions. We won't be responsible. The site location on the map is an approximate location.

www.vividhomes.co.uk

@WeAreVIVIDs