

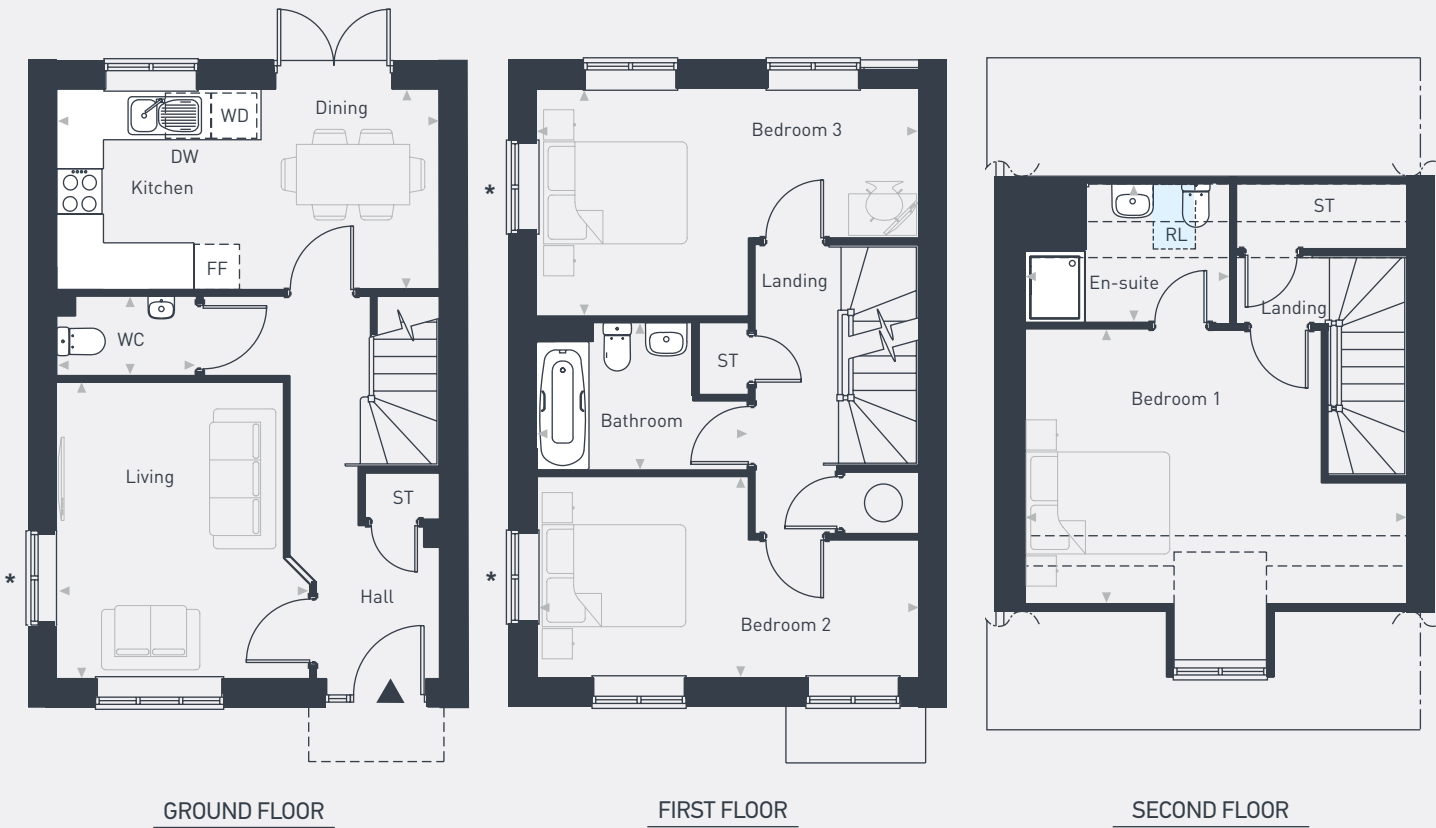
**Yare  
Green**

**The Kentwell  
3 bedroom house**



Plots as drawn: 13, 17, 57, 62, 94 and 98  
Handed: 12, 16, 58, 61, 93 and 97

108.09 sq.m / 1,163 sq.ft



FF: Fridge / Freezer DW: Dishwasher WD: Washer / Dryer ST: Store WC: Water Closet RL: Rooflite \* Window applicable to some plots

DIMENSIONS	m	ft
Kitchen/Dining	5.06m x 2.65m	16'7" x 8'8"
Living	3.00m x 3.92m	9'10" x 12'10"
WC	1.85m x 1.05m	6'0" x 3'5"

DIMENSIONS	m	ft
Bedroom 1	5.06m x 3.58m	16'7" x 11'8"
En-suite	2.46m x 1.88m	8'0" x 6'2"
Bedroom 2	5.06m x 2.66m	16'7" x 8'8"
Bedroom 3	5.06m x 2.93m	16'7" x 9'7"
Bathroom	2.81m x 1.95m	9'2" x 6'4"



07557 499 020 | [placesforpeople.co.uk/yare-green-shipdham](https://placesforpeople.co.uk/yare-green-shipdham)  
Chapel Street, Shipdham, Norfolk IP21 7LB

Please note: All layouts and floor plans, configurations, maps and information are intended for guidance only and accuracy of this information cannot be relied upon by prospective purchasers who must make their own enquiries to satisfy themselves by inspection or otherwise as to the correct detail. The artist's impression is intended as a guide only and that actual finishes may vary. For more details, please speak to your sales advisor.