

**Yare
Green**

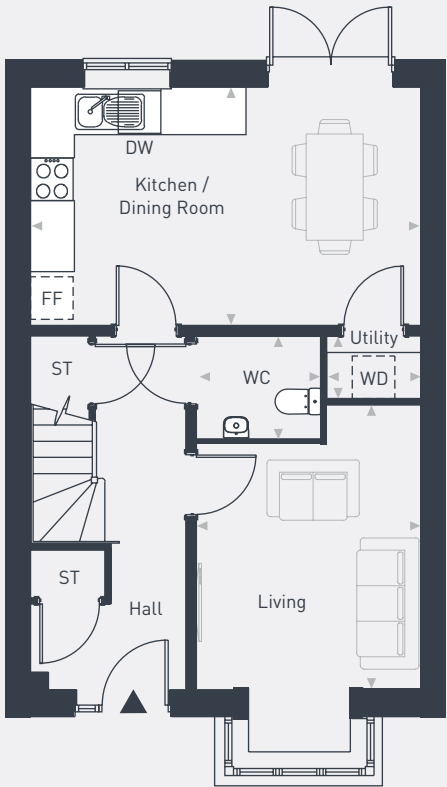
**The Frampton
3 bedroom house**



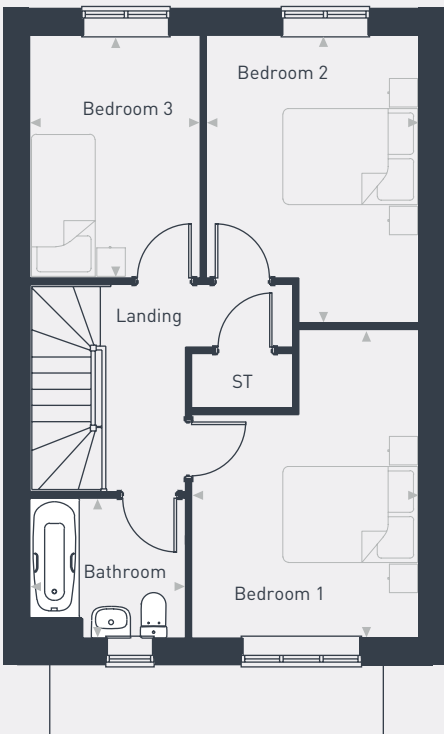


Plots as drawn: 31, 39, 59, 81, 92 and 95
Handed: 30, 38, 60, 80, 91 and 96

94.83 sq.m / 1,020 sq.ft



GROUND FLOOR



FIRST FLOOR

FF: Fridge / Freezer DW: Dishwasher WD: Washer / Dryer ST: Store WC: Water Closet

DIMENSIONS	m	ft
Kitchen/Dining	3.16m x 4.00m	10'4" x 13'1"
Living	5.50m x 3.36m	18'0" x 11'0"
WC	1.75m x 1.45m	5'8" x 4'9"
Utility	1.32m x 0.90m	4'3" x 2'11"

DIMENSIONS	m	ft
Bedroom 1	3.21m x 4.35m	10'6" x 14'3"
Bedroom 2	3.00m x 4.06m	9'10" x 13'3"
Bedroom 3	2.40m x 3.40m	7'10" x 11'1"
Bathroom	2.20m x 1.95m	7'2" x 6'4"



07557 499 020 | placesforpeople.co.uk/yare-green-shipdham
Chapel Street, Shipdham, Norfolk IP21 7LB

Please note: All layouts and floor plans, configurations, maps and information are intended for guidance only and accuracy of this information cannot be relied upon by prospective purchasers who must make their own enquiries to satisfy themselves by inspection or otherwise as to the correct detail. The artist's impression is intended as a guide only and that actual finishes may vary. For more details, please speak to your sales advisor.