

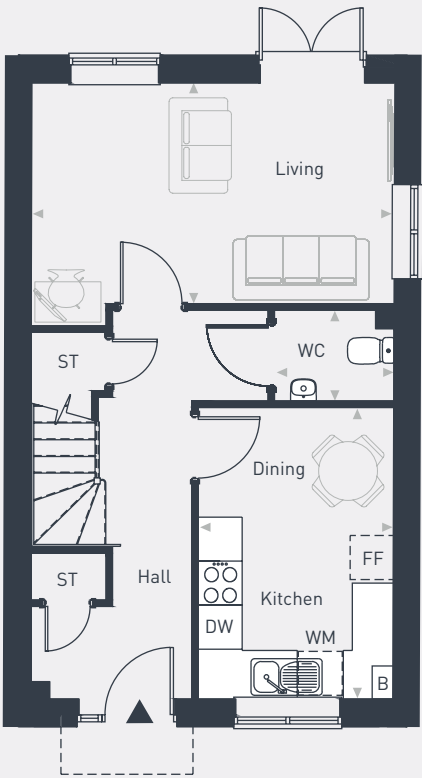
**Yare  
Green**

**The Maxstone  
4 bedroom house**

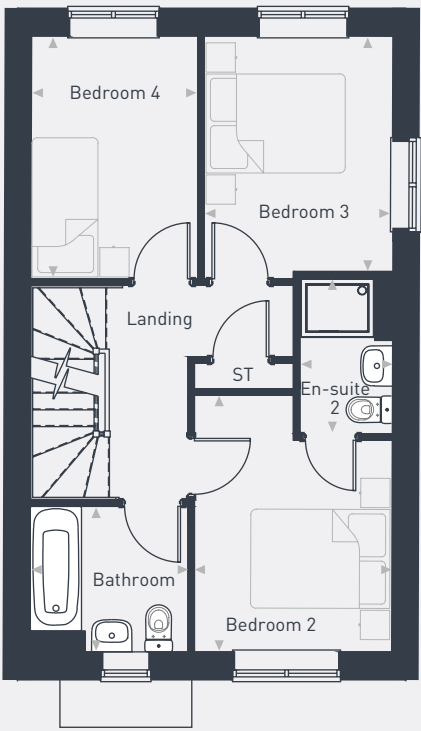


Plots as drawn: 9, 10, 11, 15, 19, 55, 77, 78 and 79  
Handed: 14, 18, 20, 21 and 54

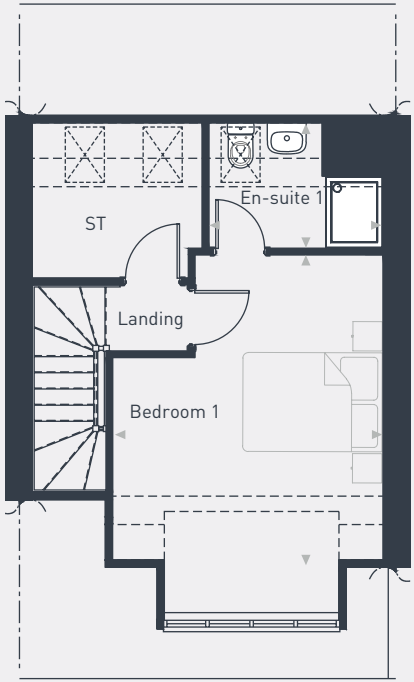
113.57 sq.m / 1,222 sq.ft



GROUND FLOOR



FIRST FLOOR



SECOND FLOOR

FF: Fridge / Freezer DW: Dishwasher WD: Washer / Dryer B: Boiler ST: Store WC: Water Closet RL: Rooflite \* Window applicable to some plots

DIMENSIONS	m	ft
Kitchen/Dining	3.97m x 2.67m	13'0" x 8'9"
Living	4.95m x 3.01m	16'2" x 9'10"
WC	1.63m x 1.23m	5'4" x 4'0"

DIMENSIONS	m	ft
Bedroom 1	4.22m x 3.12m	13'10" x 10'3"
En-suite 1	2.45m x 1.84m	8'0" x 6'0"
Bedroom 2	3.50m x 2.70m	11'5" x 8'10"
En-suite 2	2.12m x 1.27m	6'11" x 4'2"
Bedroom 3	3.31m x 2.57m	10'10" x 8'5"
Bedroom 4	3.21m x 2.28m	10'6" x 7'5"
Bathroom	2.19m x 2.06m	7'2" x 6'9"



07557 499 020 | [placesforpeople.co.uk/yare-green-shipdham](https://placesforpeople.co.uk/yare-green-shipdham)  
Chapel Street, Shipdham, Northfolk IP21 7LB

Please note: All layouts and floor plans, configurations, maps and information are intended for guidance only and accuracy of this information cannot be relied upon by prospective purchasers who must make their own enquiries to satisfy themselves by inspection or otherwise as to the correct detail. The artist's impression is intended as a guide only and that actual finishes may vary. For more details, please speak to your sales advisor.