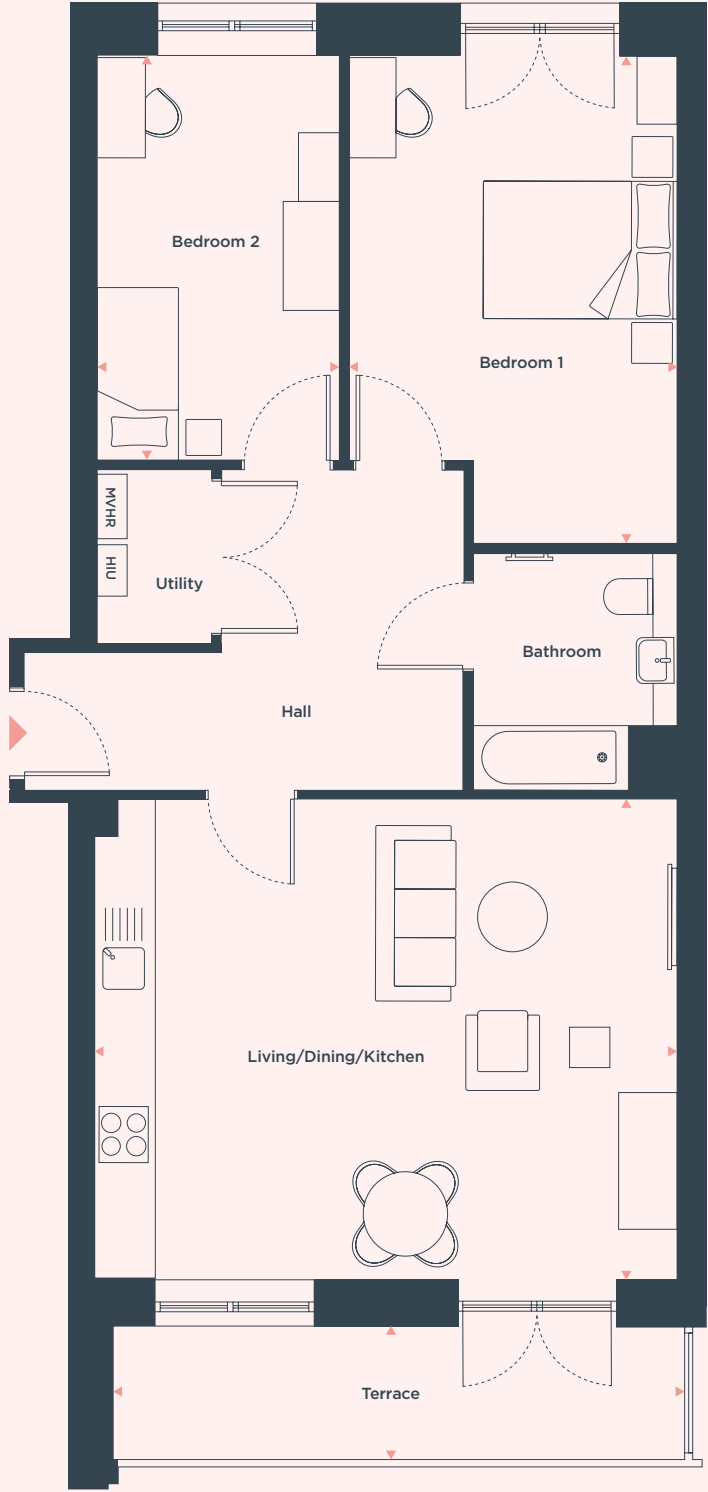




TWO BEDROOM APARTMENTS

PLOTS: 10, 22, 34, 46 & 58

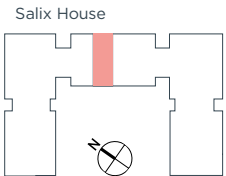


LIVING / DINING / KITCHEN	6.33m x 5.26m	20'9" x 17'3"
BEDROOM 1	5.36m x 3.58m	17'7" x 11'9"
BEDROOM 2	4.45m x 2.63m	14'7" x 8'7"
TERRACE	6.23m x 1.46m	20'5" x 4'10"
Total Area	86.1 sq.m.	927 sq.ft.

FLAT NUMBERS
Floors Salix House

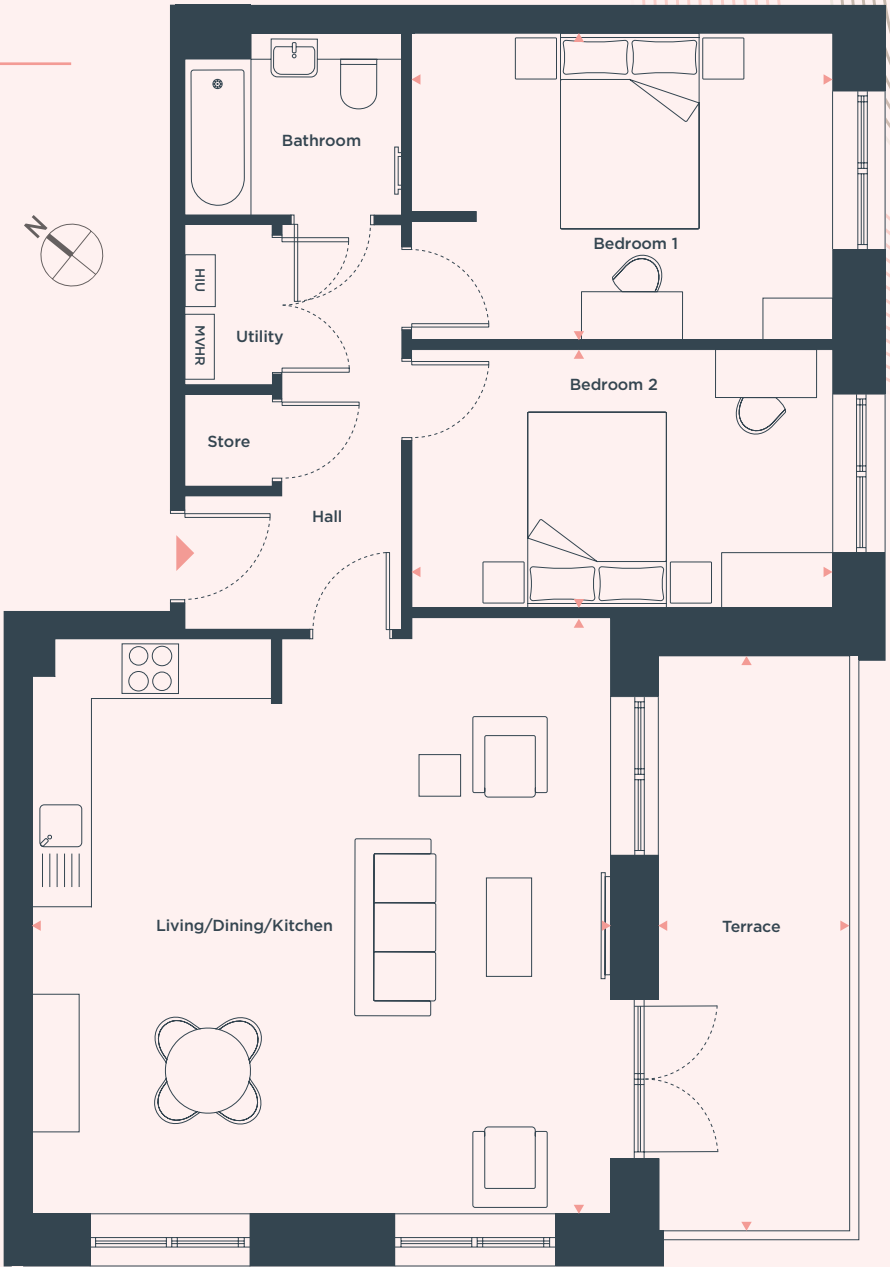
2nd	10
3rd	22
4th	34
5th	46
6th	58

Heat Interface Unit HIU
Mechanical Ventilation
Heat Recovery Unit MVHR



TWO BEDROOM APARTMENTS

PLOTS: 7, 19, 31, 43 & 55

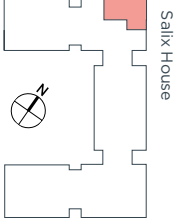


LIVING / DINING / KITCHEN	6.49m x 6.26m	21'4" x 20'6"
BEDROOM 1	4.55m x 3.34m	14'11" x 10'11"
BEDROOM 2	4.55m x 2.81m	14'11" x 9'3"
TERRACE	6.26m x 2.06m	20'7" x 6'9"
Total Area	84.7 sq.m.	912 sq.ft.

FLAT NUMBERS
Floors Salix House

2nd	7
3rd	19
4th	31
5th	43
6th	55

Heat Interface Unit HIU
Mechanical Ventilation
Heat Recovery Unit MVHR



Floorplans shown are for illustrative purposes and approximate measurements only. Exact layouts and sizes may vary. All measurements may vary within a tolerance of 5%. The dimensions are not intended to be used for carpet sizes, appliance sizes or items of furniture.

Floorplans shown are for illustrative purposes and approximate measurements only. Exact layouts and sizes may vary. All measurements may vary within a tolerance of 5%. The dimensions are not intended to be used for carpet sizes, appliance sizes or items of furniture.