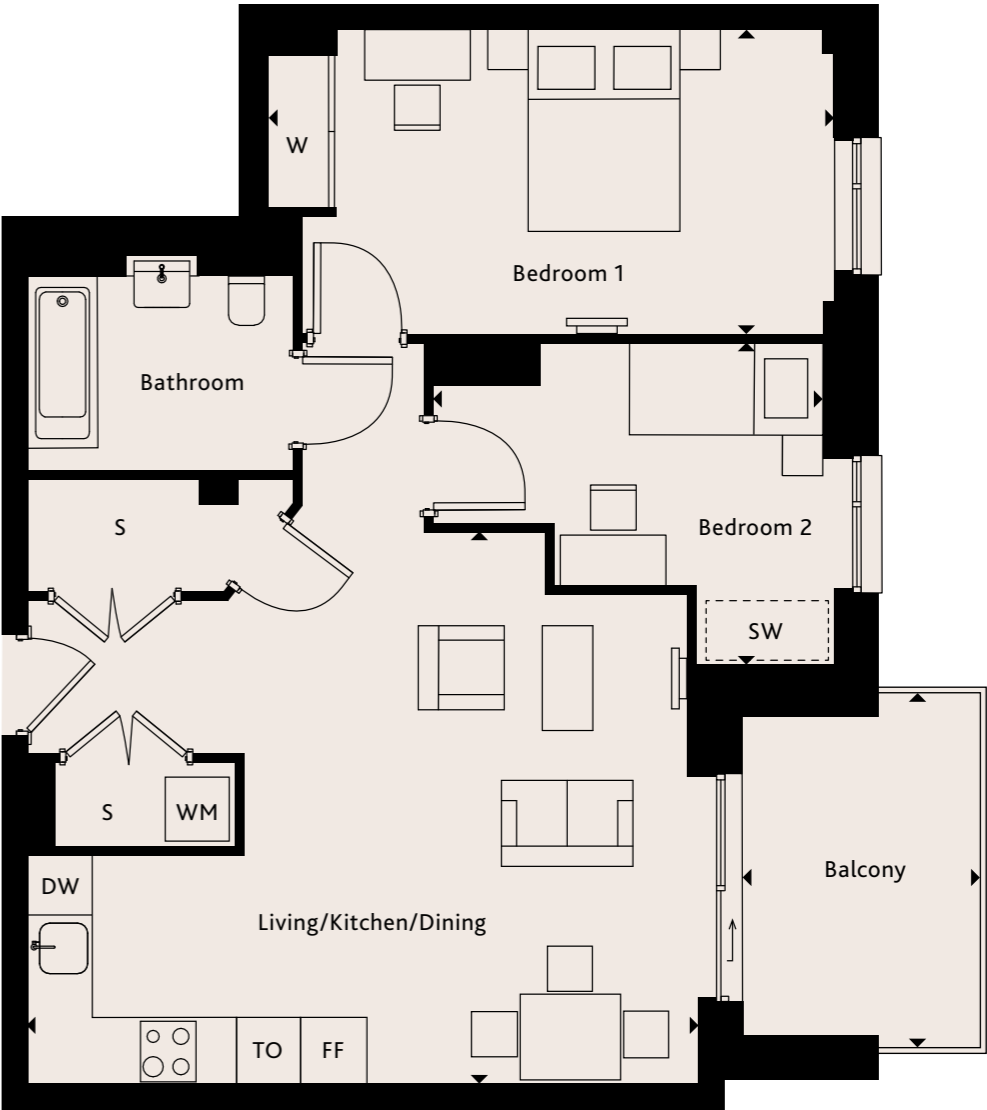


# THE WATER LILY

APARTMENTS:

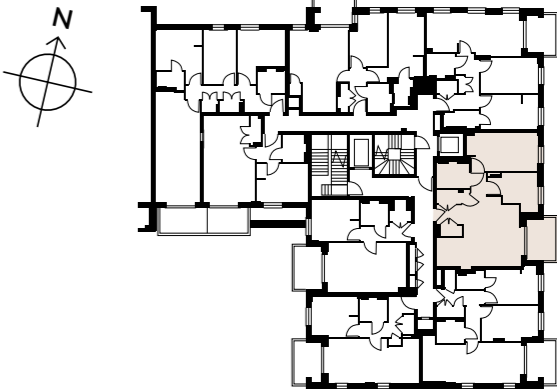
4, 12, 20, 28, 34

Living/Kitchen/Dining	6.64m x 4.84m	21'10" x 15'10"
Bedroom 1	4.95m x 3.00m	16'3" x 9'10"
Bedroom 2	3.86m x 3.15m	12'8" x 10'4"
Balcony	3.39m x 2.29m	11'1" x 7'6"
Total area	72.8m²	784ft²



KEY

- ◄► Measurement Points
- W Wardrobe
- SW Space for Wardrobe
- S Store Cupboard
- DW Dishwasher
- FF Fridge Freezer
- TO Tall Oven
- WM Washing Machine



Ceiling heights may vary with areas below 2.3 meters, please speak to a member of the sales team for more information. Floorplans shown for Square Roots Kingston KT1 are for approximate measurements only. Exact layouts and sizes may vary. All measurements may vary within a tolerance of 5%. The dimensions are not intended to be used for carpet sizes, appliance sizes or items of furniture. Furniture layouts are indicative only. Kitchen layout indicative only. Please ask Sales Consultant for further information.