

# THE OAKWOOD

APARTMENTS:

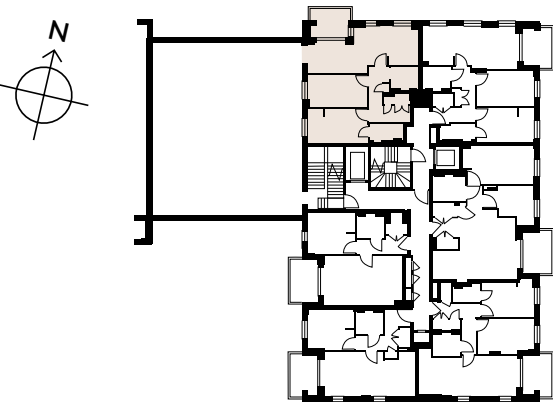
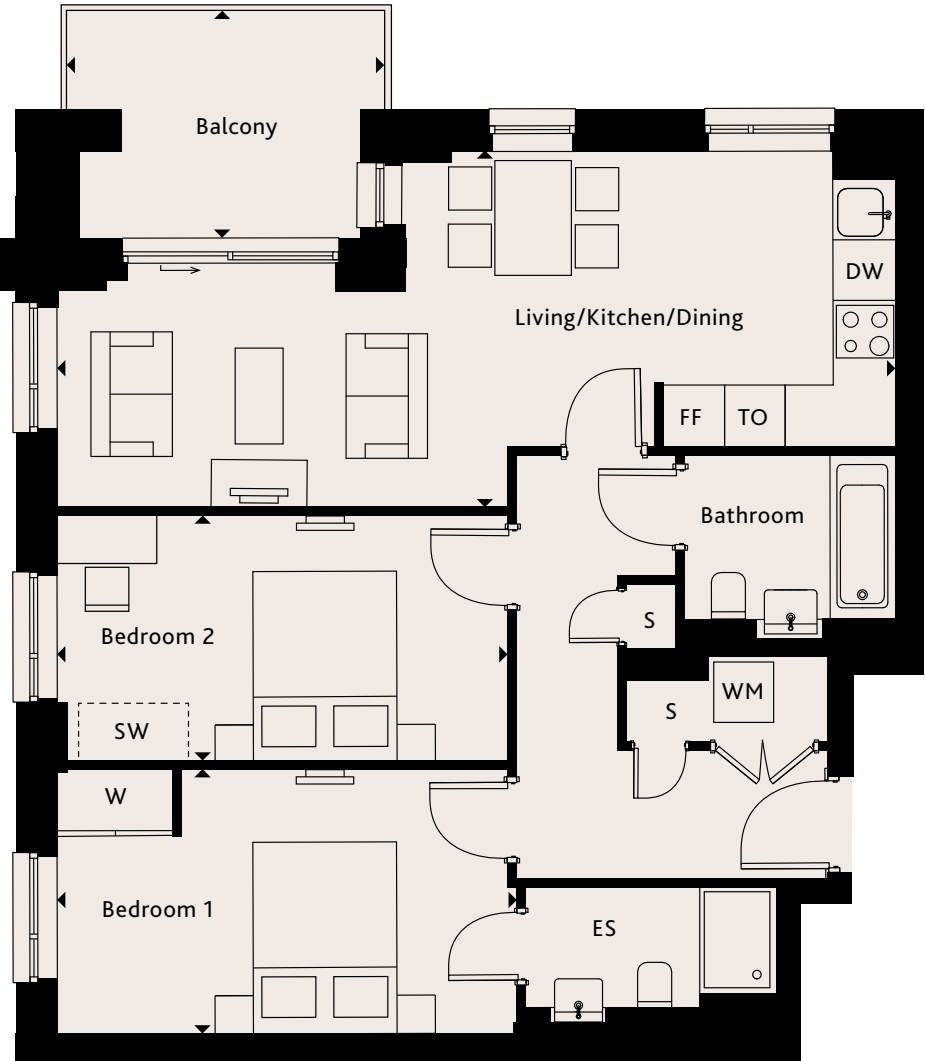
30, 36, 42, 48, 54, 60, 66, 72, 78

Living/Kitchen/Dining	8.75m x 3.71m	28'8" x 12'2"
Bedroom 1	4.79m x 2.75m	15'9" x 9'0"
Bedroom 2	4.58m x 2.55m	15'0" x 8'4"
Balcony	3.19m x 2.29m	10'5" x 7'6"
Total area	71.9m <sup>2</sup>	774ft <sup>2</sup>

KEY

- ◄► Measurement Points
- W Wardrobe
- SW Space for Wardrobe
- S Store Cupboard
- ES Ensuite
- DW Dishwasher
- FF Fridge Freezer
- TO Tall Oven
- WM Washing Machine

Ceiling heights may vary with areas below 2.3 meters, please speak to a member of the sales team for more information. Floorplans shown for Square Roots Kingston KT1 are for approximate measurements only. Exact layouts and sizes may vary. All measurements may vary within a tolerance of 5%. The dimensions are not intended to be used for carpet sizes, appliance sizes or items of furniture. Furniture layouts are indicative only. Kitchen layout indicative only. Please ask Sales Consultant for further information.



SQUARE ROOTS

KINGSTON KT1