

Goldsmith's Green

A STUNNING COLLECTION OF
2, 3 AND 4 BEDROOM HOMES

**Homes built for a
lifetime of memories**



Welcome to **Goldsmith's Green**

Looking for the perfect place to put down roots?
Our brand-new homes at Goldsmith's Green near Kettering offer modern countryside living with all the amenities you could want close by.

Choose from an attractive range of two to four-bedroom homes. Each has been thoughtfully designed to provide bright, generous living space that adapts perfectly to entertaining, working, family time or simply kicking back in comfort — however you wish to live your life.

When you buy new at Goldsmith's Green, you can look forward to all the benefits of an energy and cost-efficient home along with an exquisite finish you'll love. The high-quality kitchen and bathroom fittings, abundant storage and ready-turfed private rear garden are all evidence of our trademark close attention to detail.

On the doorstep are acres of calming green space just waiting to be explored but with vibrant Kettering just over a mile away, whenever the mood takes you, you're free to enjoy a lively day or evening out.

A NEW COMMUNITY AND WAY OF LIFE



A great place to live

You couldn't ask for a better location than Goldsmith's Green. Surrounded by gorgeous countryside, you're also within easy access of handy amenities, with Kettering's shops, pubs, restaurants and cafes just over a mile away.

Originally established as a Roman settlement, the Northamptonshire market town of Kettering later became famous for shoemaking; today, it's a thriving destination offering a wealth of retail, leisure and cultural facilities that locals of all ages can enjoy.

Kettering's newly regenerated Cultural Quarter is where you'll find a variety of shops, bars and eateries as well as The Yards, a unique and quirky shopping area. The town still holds weekly markets, including a popular flea market for antiques, second hand items and arts and crafts, and you can look forward to popular annual events such as the Christmas Market and Northamptonshire's Good Food and Drink Festival.

Thanks to Kettering's Purple Flag status, the town centre offers a safe and vibrant night out while culture vultures will love the impressive line-up of performing arts and live entertainment at the town's Lighthouse Theatre.

For families, Ofsted 'Good' and 'Outstanding' rated schools, including St Thomas More Catholic Primary School, St. Andrew's CofE Primary School and Wren Spinney Community Secondary School, are conveniently located less than a mile away*. Also on the doorstep are impressive sporting facilities as well as a soft play centre at Kettering Leisure Village.

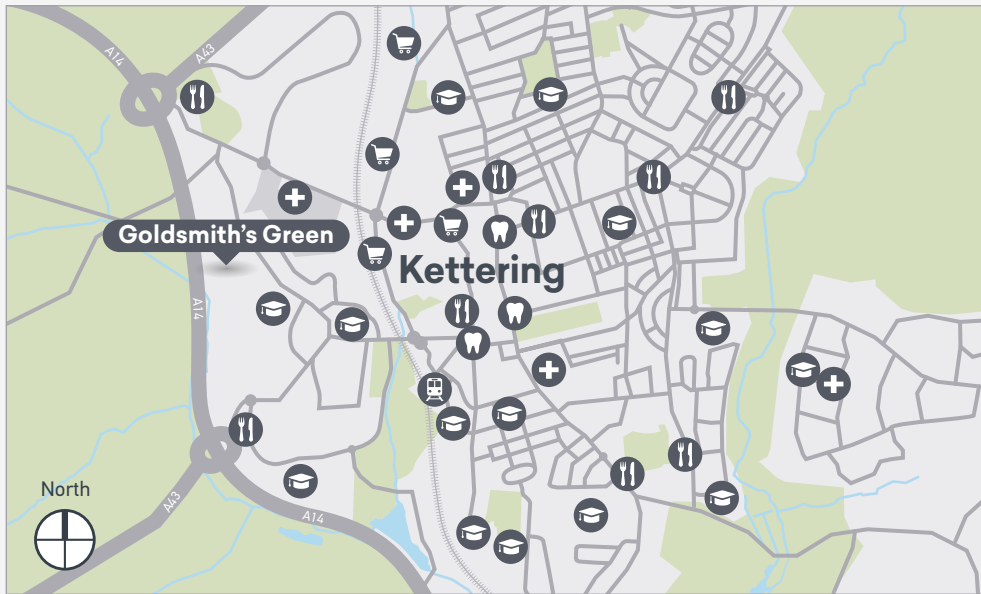
From woodland walks at Twywell Hills and Dales Country Park to Formula 1 fun at Silverstone, the local area offers no shortage of great days out. A visit to Wicksteed Park — one of the UK's oldest theme parks with rides, attractions, a steam railway and 147 acres of parkland — is an absolute must. At Rushden Lakes Shopping and Leisure complex, adventure golf, rock climbing and a Cineworld Cinema are only a short drive away.



Nearby Welland Viaduct

A place to call home

Excellent transport connections make Goldsmith's Green the ideal place to call home. You will be within easy reach of both the M1 and A1 via the A14, while a direct train service to London St Pancras takes less than an hour.



- Travel times by car
(Estimate only)

 - Northampton – 30 mins
 - Peterborough – 50 mins
 - Cambridge – 55 mins
 - Birmingham – 67 mins
 - Luton – 67 mins
- Airport
 - School
 - Restaurant
 - Train Station
- Supermarket
 - Doctors
 - Dentist



A choice of high-specification 2, 3 and 4-bedroom homes, generously-sized with a contemporary layout that you can adapt to suit your unique lifestyle.



A popular, well-established location surrounded by the lovely Northamptonshire countryside, with handy local amenities and plenty to do in the nearby vibrant market town of Kettering.



Kettering's Cultural Quarter offers both high street and independent shops, bars and eateries with weekly markets and popular cultural events adding an eclectic, cosmopolitan feel.



Getting around couldn't be easier, with a regular bus service into Kettering and easy access to both the M1 and A1 via the A14.



Northampton, Bedford and Milton Keynes are all 30 miles away or less while a direct train to London St Pancras takes less than an hour.



For families, a good choice of Ofsted 'Good' and 'Outstanding' rated primary and secondary schools are conveniently located less than a mile away.



An active, healthy lifestyle is supported by an abundance of open green spaces and woodland together with impressive sporting facilities at Kettering Leisure Village.



Nearby attractions such as Wicksteed Park — one of the UK's oldest theme parks — and Rushden Lakes Shopping and Leisure complex offer something for everyone to enjoy.

Why buy new?

Buying a brand-new home with Places for People is one of the easiest decisions you'll ever make. Designed for modern living, with plenty of space to relax, work or entertain, all you need to do is unpack and start making your home your own.

placesforpeople.co.uk/goldsmiths-green



Research by the Home Builders Federation (HBF)* shows that new homes are much more environmentally friendly than older equivalent properties, emitting just 1.4 tonnes of carbon a year, compared to the 3.6 tonnes that existing properties emit.

At Places for People, we design and build our homes to maximise energy efficiency, using energy-saving lighting, eco-appliances and water-saving devices as well as excellent insulation to reduce your carbon footprint and keep your utility costs down. Our homes are rated from A to C.

Buying a new home can be good for your bank balance too. The HBF calculates that buyers of new homes save on average £2,510.73

on household bills each year, with buyers of houses saving even more at £3,117.85 (around £260 per month).

When you buy your new home at Goldsmith's Green, our experienced sales team will be with you every step of the way to guide you through the home-buying process. Our homes also benefit from a 10-year insurance-backed warranty, meaning you can move in with peace of mind (without the worry of expensive structural repairs) and simply enjoy the thrill of turning a blank canvas into your dream home.

Plus — you and your new neighbours are all getting to build a new Community together — what's not to love?

*Home Builders Federation Watt a Save report Feb 2023





Computer Generated Image — Goldsmith's Green

Sustainable living for less

When you buy new with us, you can look forward to all the benefits of an energy and cost-efficient home without having to compromise on comfort or quality.

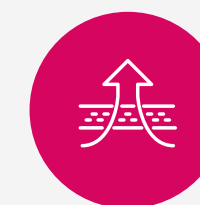
Designed and built to sustainable environmental standards, our energy-efficient homes feature efficient heating systems and energy-saving technology along with an exquisite finish you'll love.

You'll use less energy, spend less on utility bills and still have the warm, welcoming home you've always wanted.

And with everything you need conveniently located nearby — from shops and schools to leisure facilities and green spaces — Goldsmith's Green is the perfect place to enjoy a more sustainable lifestyle, supporting the local economy while building connections to last a lifetime.



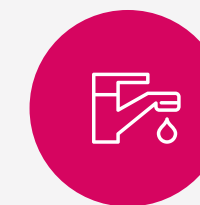
Car charging points
Available to you, encouraging greener travel.



Forward-thinking fabric design
Our well-insulated homes are designed to maximise energy efficiency and reduce running costs, now and in the future.



Energy-efficient lighting
LED light fittings and bulbs lower energy use as well as your bills.



Water-saving devices
Our kitchen and bathroom fittings save both water and money.

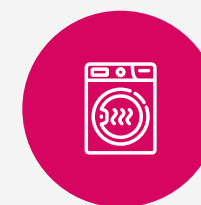
At Goldsmith's Green, you can enjoy a more comfortable home that costs less to run, with everything you need close by.



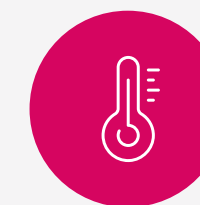
Good ventilation
Our homes come with good ventilation for a comfortable environment.



Double glazed windows
Benefit from a reduction in heat loss, noise and energy payments.



Eco-appliances
Most of our fitted appliances are A rated so cheaper to run.



Seasonally efficient
Our homes reduce the risk of overheating in the warmer months.



**CONSUMER
CODE FOR
HOME BUILDERS**
www.consumercode.co.uk

tsi
APPROVED CODE
TRADINGSTANDARDS.UK

Aerial image of Brooklands — Milton Keynes

When you buy a home from Places for People, you know you're in safe hands...

What we do

We are a property developer and manager with a proven track record for delivering high-quality homes in thriving Communities right across the UK. With us, you can look forward to outstanding quality and service, because we handle the whole development process — from acquiring the land, planning our sites and designing our homes, to building and selling or renting them.

As the UK's leading Social Enterprise, our overriding purpose is to create homes where Community matters. From small housing developments to large-scale regeneration projects, we tailor our homes to the needs of local People, take responsibility for our environmental impact, and put People First to build a sense of Community.

Our approach

With more than 50 years' experience of managing and developing homes, we know what it takes to build happy, healthy and inclusive places to live. All our Communities are delivered by our award-winning, specialist placemaking, property investment and management companies across the UK, who ensure the places we create meet a variety of needs, not just now but well into the future. Where others think in years, we think in decades.

What makes us different

We believe our homes should be attainable for everyone, which is why we offer a wide range of buying options, including shared ownership. So, whether you're taking your first step onto the property ladder or looking for your forever home, there's a place to suit your individual needs.

We listen to our Customers too — and give them what they ask for: bright, spacious homes with flexible living areas that easily adapt to work or play, plenty of storage and that all-important private outdoor space. In our well-connected Communities, you'll have all the services and facilities you need on your doorstep — from shops, restaurants, schools and healthcare to beautiful green open spaces offering a natural retreat from the busyness of modern life.

Because when you buy from us, you're not just buying a home — you're buying into a Community; a place where you can belong, build connections and put down roots to last a lifetime.





steps to secure your dream home

Here's what your Shared Ownership
home buying journey looks like...

Purchasing a Places for People home with Shared Ownership has never been easier. Whether you're buying for the first time or you've owned a property before, we've kept things simple so you're free to enjoy this next exciting phase.

From the moment you get in touch to that exhilarating day when you pick up your keys (and even after you've settled in), our friendly, experienced Sales team will be right by your side, supporting and guiding you every step of the way.

Get expert advice

The first step is to get in touch with our Sales team. We'll talk you through the Shared Ownership process and either refer you for an affordability assessment or arrange for you to visit.

Determine your budget

We will ask you to complete an affordability assessment with an Advisor, which includes filling in a 5-year budget planner to determine the level of share you can purchase.

Apply for a mortgage

If you're purchasing your new home with a mortgage, your affordability assessment is also when you will arrange with your mortgage lender or Advisor to proceed with your Shared Ownership mortgage application.

Exchange contracts

This is when things become official! Once you're happy with the legal contracts, you can sign them, pay your deposit and receive a completion date to move into your new Shared Ownership home.

Attend a home demonstration

Before completing, we'll arrange for you to attend your new home demonstration and access your Home User Guide, so you can get to know your Shared Ownership home and understand how everything works.

Start things moving

When you visit, we will check you meet the scheme's eligibility and affordability criteria. First and foremost is that your household income needs to be under £80,000 a year (£90,000 in London).

Reserve your home

Once your finances are in place, you can formally reserve one of our Shared Ownership properties and pay your reservation fee! Our team will continue to guide you through the process.

Instruct a solicitor

Now you've reserved your new home, you'll need to instruct a solicitor experienced in Shared Ownership to handle the legal aspects of the purchase. We can refer you to independent solicitors if needed.

Get ready to move

Now is the time to organise contents insurance, arrange removals quotes and set up or transfer accounts for TV, internet and utilities suppliers ready for when you change address.

Complete and move in

Legal completion is that happy moment when you own a share of your new home! Your mortgage lender transfers the funds, we arrange handover of your keys and you start living life your way!

“Everyone I’ve dealt with at Places for People has been so friendly and gone out of their way to help, no matter what your query. They’ve been brilliant and have kept in constant touch with us throughout.”

Christian, Places for People Customer



“We already loved the area so it only took us five minutes to decide this was the home for us! It’s so convenient here; we’re close to work and we have beautiful walks and a café on our doorstep.”

Ellie, Places for People Customer



**We create homes where
Community matters. We improve
our Customers' lives every day
through the homes we build and
the Communities we manage.**



Because Community Matters
#WeAreCommunity
Proud to be creating sustainable
Communities for the long term



placesforpeople.co.uk/goldsmiths-green

Although every care has been taken to ensure the accuracy of the information provided within this brochure, the contents do not form part of or constitute any representation, warranty or contractual agreement. These particulars have been prepared for the convenience of interested purchasers, and the information provided is intended as a preliminary guide only and should not be relied upon as statements or representations of facts. The computer generated images and photography used within this brochure are provided for illustrative purposes only and may not reflect the actual size, layout and internal or external finish of the completed units. We regret that we cannot accept responsibility for error or misdescription, and the specification shall not form any part of the contract. Please refer to the sales executive for details of the plot of your choice.

placesforpeople.co.uk/goldsmiths-green

Follow us on



@placesnewhomes



@placesforpeopleofficial

#BecauseCommunityMatters

KITCHENS

- Symphony fitted kitchen in a selection of colours
- Co-ordinated worktop finish and matching upstand
- Soft-close doors and drawers
- Built in electric fan oven (Rating A), four ring gas hob and splashback to hob area (double oven to selected house types)
- Cooker hood (integrated to selected house types)
- Integrated 70/30 fridge-freezer (Rating A+)
- Stainless-steel single-bowl inset sink with chrome mixer tap
- Integrated washing machine (to selected plots only)
- Integrated dishwasher (to selected house types)
- Removable base unit, with plumbing and electric for future dishwasher space (to selected plots only)

PLUMBING AND HEATING

- Efficient gas-fired Potterton Assure combi boiler or Baxi Assure System boiler and megaflow
- Stelrad compact radiators white finish
- TRV fitted to all rooms except those with thermostats fitted
- Heated towel radiators to bathrooms (and en-suite if applicable)

ELECTRICAL

- External lights to front doors
- Deta wired doorbell
- Fibre Optic connection to the property
- TV and satellite sockets with wiring taken to loft space for future connection
- Mains wired smoke, heat and carbon monoxide detectors
- USB socket in kitchen and primary bedroom
- Deta Slimline white sockets throughout
- Extract fans to all wet rooms
- Shaver socket to all bathrooms and en-suites
- Single fluorescent strip lighting to selected garages

BATHROOMS, EN-SUITES AND CLOAKROOMS

- White Roca bathroom suite with shower over bath and Mira glass shower screen (available in selected house types)
- White wash basin and chrome mixer tap
- Porcelanosa wall tiles around shower / bath
- Amtico vinyl flooring
- White Mira shower suite to en-suite (where applicable) with Mira shower tray and glass shower screen where shown on the layout

INTERNAL FINISHES

- Amtico Vinyl flooring to kitchen, bathroom and WC
- Crown Covermatt white emulsion to all walls and ceilings
- Skirting and architrave pencil rounded profile painted white gloss
- Timber staircase with newel caps and handrails painted white gloss

DOORS AND WINDOWS

- Front doorset GRP door with timber frame, chrome ironmongery and multi point locking system
- Four panel semi solid doors painted white with polished chrome handles
- UPVC windows and French doors with high performance glazing
- Garage steel framed up and over canopy door in white (where applicable)
- Fire rated loft hatch

EXTERNAL

- Solar panels on all 3 and 4-bed properties
- Bath and shower water heat recovery units to 2-bed plots
- All homes to have access to an EV charging point
- Front garden landscaped
- Turf installed to rear gardens
- External tap
- Slabs to path and patio areas



centralandnorthsales@placesforpeople.co.uk | placesforpeople.co.uk/goldsmiths-green

Gipsy Lane, Kettering, Northamptonshire NN16 8UB

Please note: The specifications outlined above are for indication purposes only. There may be changes throughout the build process to specific brand, materials and appliances referred to in the specification. In such cases, an alternative of similar quality will be provided. Any alterations of the specification will be of equal to or greater value, and Places for People reserve the right to implement changes to the specification without warning. This information is for guidance only and does not form any part of any contract or constitute a warranty. Please consult your Sales Executive for further information. *Correct as of April 2025.

- The Amethyst**
4 bedroom home
- The Topaz**
3 bedroom home
- The Ruby**
4 bedroom home
- The Emerald**
2 bedroom home
- The Sapphire**
4 bedroom home
- The Jade**
2 bedroom coach house
- The Diamond**
3 bedroom home
- The Sunstone**
2 bedroom home
- The Graphite**
3 bedroom home
- The Turquoise**
2 bedroom bungalow
- The Moonstone**
3 bedroom home
- Affordable Homes**
- The Pearl**
3 bedroom home

DG: Double Garage
SG: Single Garage
V: Visitor Parking
PA: Play Area
SS: Substation
P: Pylon



07971 362256 | placesforpeople.co.uk/goldsmiths-green
Gipsy Lane, Kettering, Northamptonshire NN16 8UB

Please note: All CGIs, floor plans, configurations, maps and information are intended for guidance only and accuracy of this information cannot be relied upon by prospective purchasers who must make their own enquiries to satisfy themselves by inspection or otherwise as to the correct detail, including individual plot plans and colours. Sizes and dimensions approximate and subject to change. Correct at time of print – April 2025

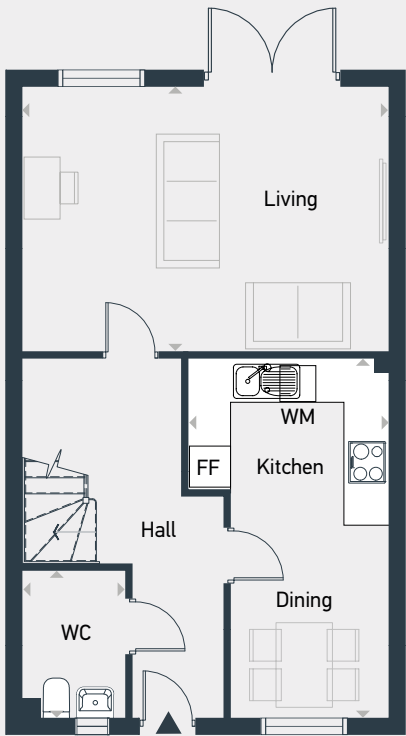




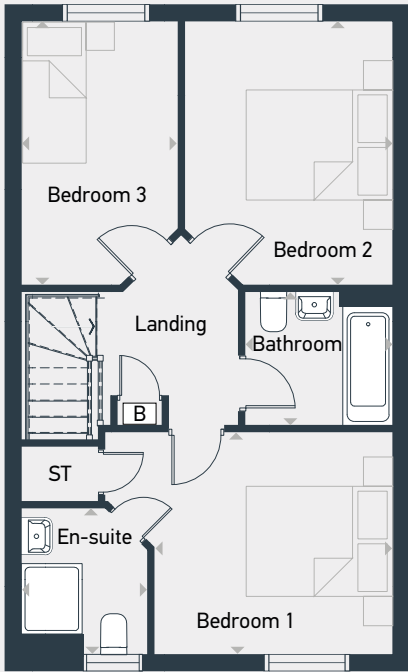


Plots as drawn: 6 and 74
Handed: 7 and 73

92.8 sq.m / 1000 sq.ft



GROUND FLOOR



FIRST FLOOR

FF: Fridge/Freezer ST: Store WM: Washing Machine WC: Water Closet B: Boiler

DIMENSIONS	m	ft
Living	5.23m x 3.73m	17'2" x 12'3"
Kitchen/Dining	5.05m x 2.90m	16'7" x 9'6"
WC	2.00m x 1.46m	6'7" x 4'10"

DIMENSIONS	m	ft
Bedroom 1	4.13m x 3.11m	13'7" x 10'3"
En-suite	2.01m x 1.71m	6'7" x 5'7"
Bedroom 2	3.63m x 2.97m	11'11" x 9'9"
Bedroom 3	3.71m x 2.16m	12'2" x 7'1"
Bathroom	2.14m x 1.96m	7'0" x 6'5"



07971 362 256 | placesforpeople.co.uk/goldsmiths-green
Gipsy Lane, Kettering, Northamptonshire, NN16 8UB