

Hayfield Heights **The Maple**

2 bedroom mid/end terraced




Computer generated image for illustration purposes only. Finishes and materials used may be subject to change.



Hayfield Heights

The Maple

2 bedroom end terraced
Plot 34

2  1  2 

Room

Kitchen/dining room	3.0m x 4.1m
Living room	5.3m x 3.3m
Bedroom 1	4.7m x 3.4m
Bedroom 2	3.0m x 4.1m
Total area	79m ²






C Cylinder S Storage W Wardrobe

Floor plan for illustration purposes only and not to scale. Dimensions are maximum and for general guidance, not suitable for furniture, appliances, or carpet sizing.

Hayfield Heights

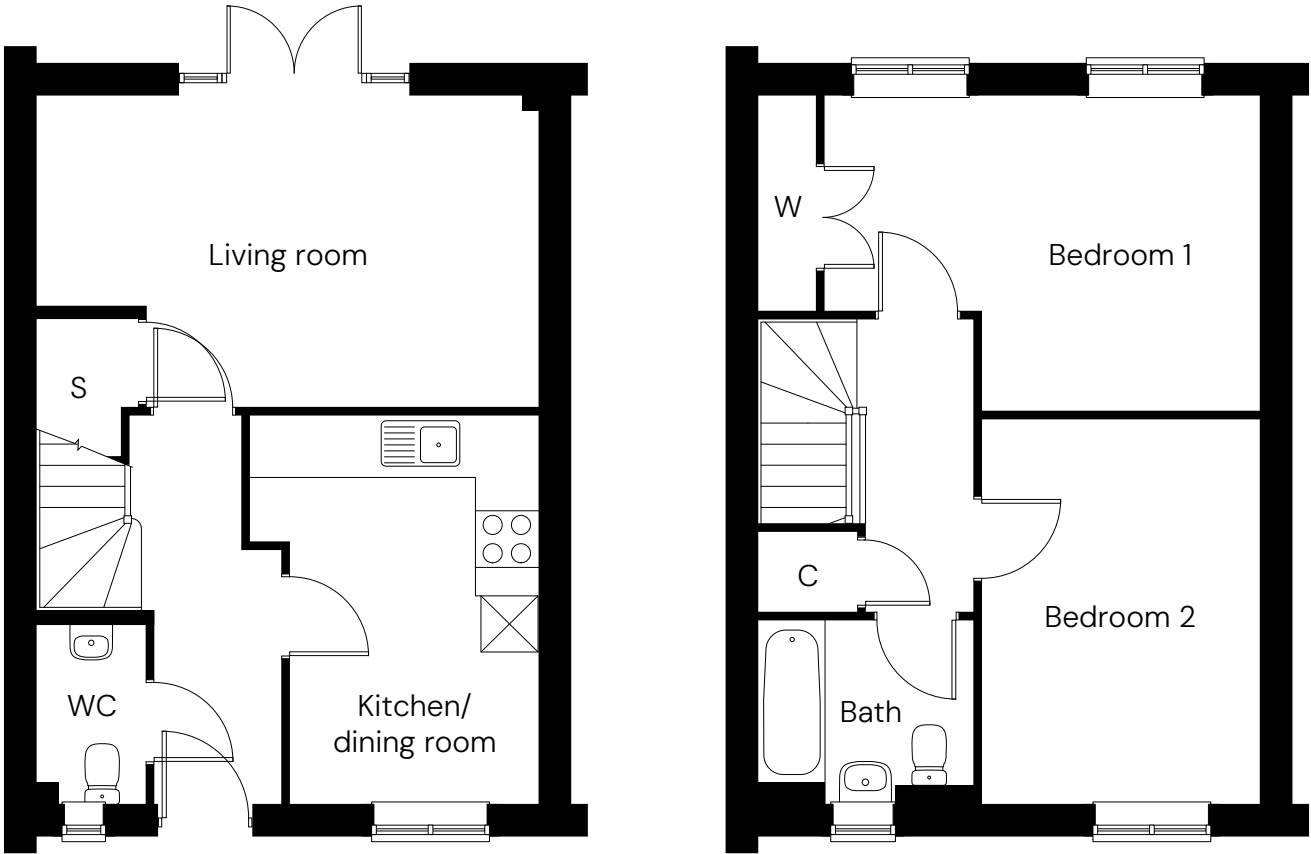
The Maple

2 bedroom mid terraced
Plot 35

2  1  2 

Room

Kitchen/dining room	3.0m x 4.1m
Living room	5.3m x 3.3m
Bedroom 1	4.7m x 3.4m
Bedroom 2	3.0m x 4.1m
Total area	79m ²



C Cylinder S Storage W Wardrobe

Floor plan for illustration purposes only and not to scale. Dimensions are maximum and for general guidance, not suitable for furniture, appliances, or carpet sizing.

Hayfield Heights

Site plan

North



-  **The Maple**
2 bedroom mid/end terraced
-  **Parking spaces**
-  **Air source heat pump**
-  **EV charging point**

Site layout and landscaping is indicative only and subject to change.

