

**Prices**  
*from*  
**£107,000**

# Whitehouse Park

Wiltipoll Crescent, Whitehouse, Milton Keynes

A brand new development of house and apartments

**////** ParadigmLiving



£ Prices from **£107,000 (40% share)**

% Share available **40%-70%**

🛏 **2 bedrooms**



*We are pleased to offer this Flat Over Garage Apartment available through Shared Ownership, located in Whitehouse, Milton Keynes.*



## Whitehouse Park KEY FEATURES

Bathroom suite and thermostatic shower

Carpet in bedrooms

Amtico flooring in kitchen/living area bathroom & En Suite

Gas central heating

Allocated parking

Fitted kitchen with integrated oven and hob

Washer/dryer and fridge freezer

These particulars do not constitute any part of an offer or contract. Any intended purchasers must satisfy themselves as to the correctness of each of the statements contained in these particulars. All floor layouts may be subject to changes. The dimensions given on the plan are subject to minor variations intended for guidance only and are not to be used for carpets, appliances or items of furniture.



**Property Type**  
**Plot 161**  
*(\* handed)*

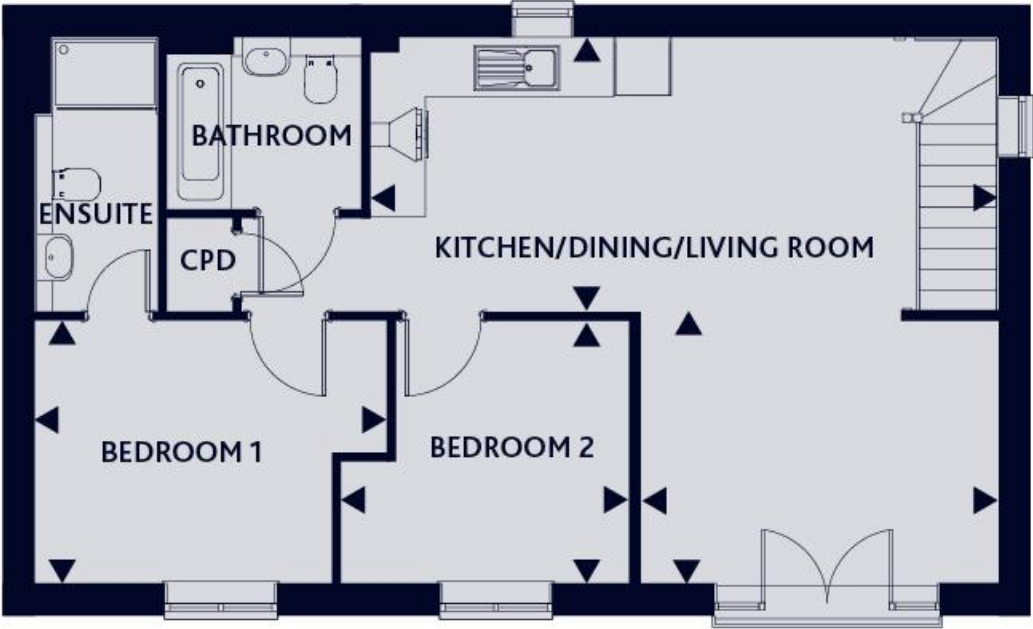
**KITCHEN/DINING**  
19'3" x 10"0"    5.89m x 3.07m

**LIVING ROOM**  
13'1" x 9'8"    3.99m x 2.95m

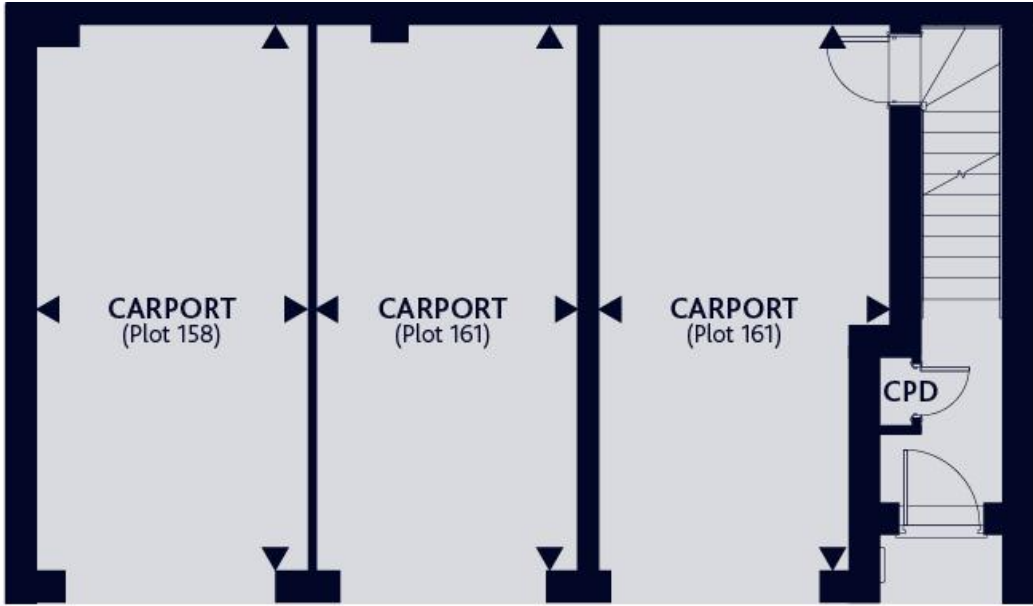
**BEDROOM 1**  
12'10" x 9'7"    3.93m x 2.94m

**BEDROOM 2**  
10'7" x 9'7"    3.23m x 2.94m

These particulars do not constitute any part of an offer or contract. Any intended purchasers must satisfy themselves as to the correctness of each of the statements contained in these particulars. All floor layouts may be subject to changes. The dimensions given on the plan are subject to minor variations intended for guidance only and are not be used for carpets, appliances or items of furniture.





FIRST FLOOR



GROUND FLOOR





-  Rented properties
-  Shared ownership properties

These particulars do not constitute any part of an offer or contract. Any intended purchasers must satisfy themselves as to the correctness of each of the statements contained in these particulars. All floor layouts may be subject to changes. The dimensions given on the plan are subject to minor variations intended for guidance only and are not to be used for carpets, appliances or items of furniture.



For more information

0300 303 8046

[www.paradigmliving.co.uk](http://www.paradigmliving.co.uk)

These particulars do not constitute any part of an offer or contract. Any intended purchasers must satisfy themselves as to the correctness of each of the statements contained in these particulars. All floor layouts maybe subject to changes. The dimensions given on the plan are subject to minor variations intended for guidance only and are not be used for carpets, appliances or items of furniture.

