

# The Alpine

Micklewell Park, Daventry

Three Bedroom Home

Plots 64, 65, 111, 112, 129, 130, 145, 146, 166, 167, 173, 347, 348 and 454



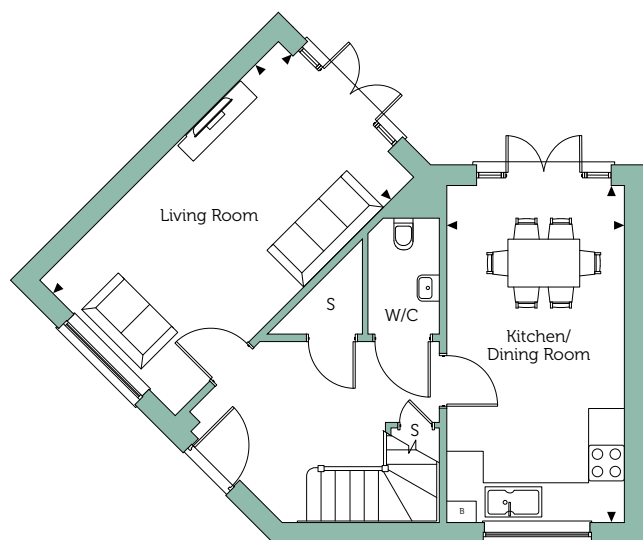
# The Alpine

Micklewell Park, Daventry



## First Floor

<b>Bedroom 1</b> 9'10" x 10'10"	3.00m x 3.32m
<b>Bedroom 2</b> 10'5" x 8'2"	3.18m x 2.51m
<b>Bedroom 3</b> 8'9" x 9'9"	2.68m x 2.99m



## Ground Floor

<b>Kitchen/Dining Room</b> 9'8" x 18'4"	2.95m x 5.60m
<b>Living Room</b> 10'4" x 18'4"	3.16m x 5.60m
<b>Gross internal area</b> 1109 sqft	103 sqm

### Key

**B** Boiler   **S** Store Cupboard   **W** Built in Wardrobe   **A/C** Airing Cupboard

Floorplans are not drawn to scale. Measurements are taken from areas marked with an arrow. They are maximum approximate dimensions and given as a guide only. These should not be used as a basis for purchasing flooring or furniture. Orbit reserve the right to alter plans, specifications, position of doors and windows and change tenure subject to demand without prior notice. External elevations vary from plot to plot. Please ask your Sales Consultant for current information when reserving your new home. Information correct at time of going to print. Computer generated image overleaf. Type B.