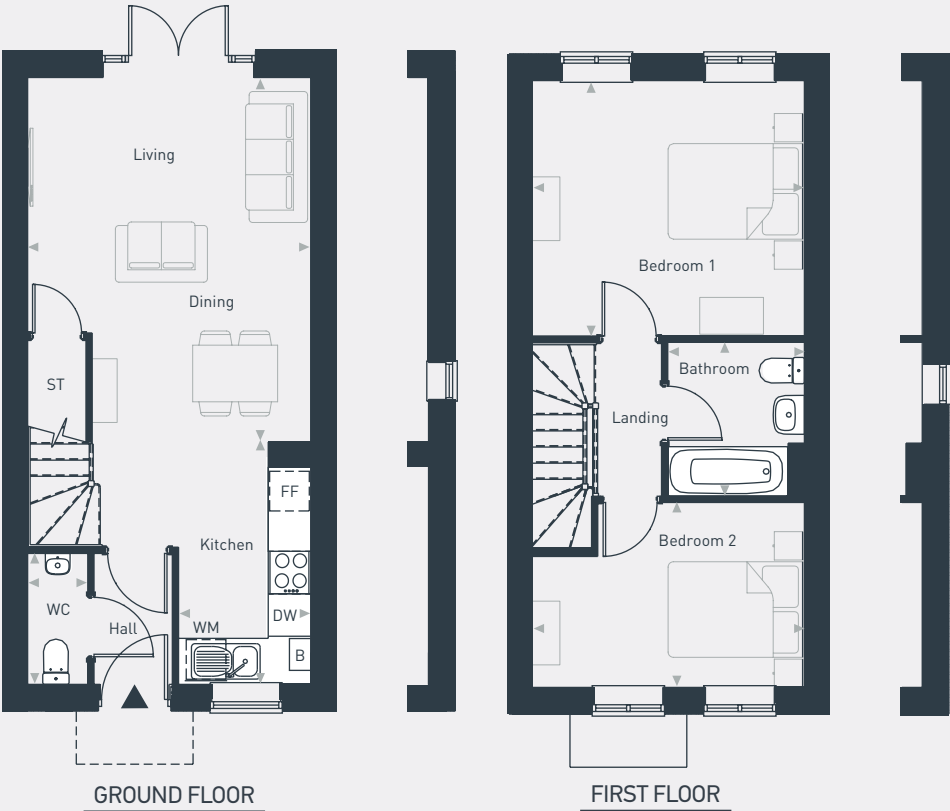


Plots as drawn: 10, 21, 25, 44, 45 and 80
Handed: 11, 20, 26, 27, 42, 43 and 79

68.54 sq.m /738 sq.ft



FF: Fridge/Freezer ST: Store DW: Dishwasher WM: Washing Machine WC: Water Closet B: Boiler

DIMENSIONS	m	ft
Kitchen/Living/Dining	3.99m x 8.57m	13'1" x 28'1"
WC	0.85m x 1.85m	2' 9" x 6' 0"

DIMENSIONS	m	ft
Bedroom 1	3.99m x 3.60m	13'1" x 11'9"
Bedroom 2	3.99m x 2.60m	13'1" x 8'6"
Bathroom	1.93m x 2.17m	6'3" x 7'1"



01793 205 027 | placesforpeople.co.uk/ashdown-gardens
Marlborough Park, Pipers Way, Old Town, Swindon

Please note: All layouts and floor plans, configurations, maps and information are intended for guidance only and accuracy of this information cannot be relied upon by prospective purchasers who must make their own enquiries to satisfy themselves by inspection or otherwise as to the correct detail. The artist's impression is intended as a guide only and that actual finishes may vary. For more details, please speak to your sales advisor.