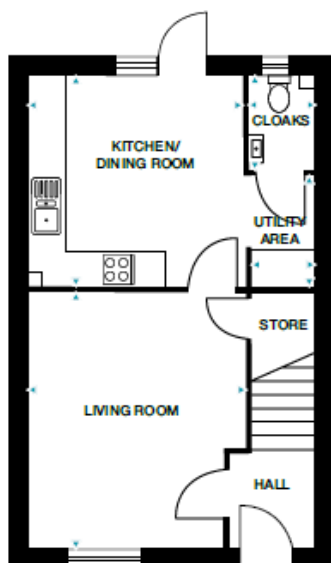


HOLLY

2 bedroom home

Plots 3, 7, 9, 10, 16, 17, 73, 74, 75 and 76

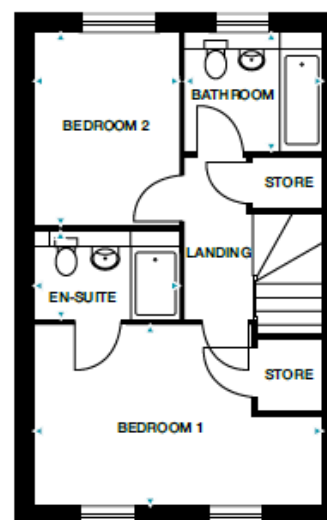


GROUND FLOOR

Kitchen/Dining Room 4724mm x 3520mm (max) 15'6" x 11'6" (max)

Living Room 3657mm x 4276mm (max) 12'0" x 14'0" (max)

Cloaks 1096mm x 1550mm (max) 3'7" x 5'1" (max)



FIRST FLOOR

Bedroom 1 4763mm x 3016mm (max) 15'7" x 9'11" (max)

En-Suite 2418mm x 1450mm (max) 7'11" x 4'9" (max)

Bedroom 2 2430mm x 3229mm 7'12" x 10'7"

Bathroom 2243mm x 1950mm (max) 7'4" x 6'5" (max)

Please note: Plots 9, 17, 74 and 75 are handed.

Dimensions stated are within 50mm (2") but should not be used as a basis for furnishings, furniture or appliance spaces etc. Dimensions for such purposes must be verified against actual site measurements. Please note the handing of plots may vary from the floor plans shown. Please check individual plot details with our sales team.