

The Willow Orchard View

3-bedroom home, sleeps 5



3 | 

2 | 

1 | 



Artist's impression

Key features

- Two double bedrooms
- Downstairs W.C.
- En-suite from master bedroom
- Open plan kitchen and dining room
- Separate living room
- Driveway parking

Hargreaves Road, Northwich, CW9 7BL

A selection of 2, 3 & 4-bedroom houses and 1-bedroom apartments



The Willow

Available plots

Rent to Buy

11, 353, 354

Shared Ownership

10, 321, 322, 355

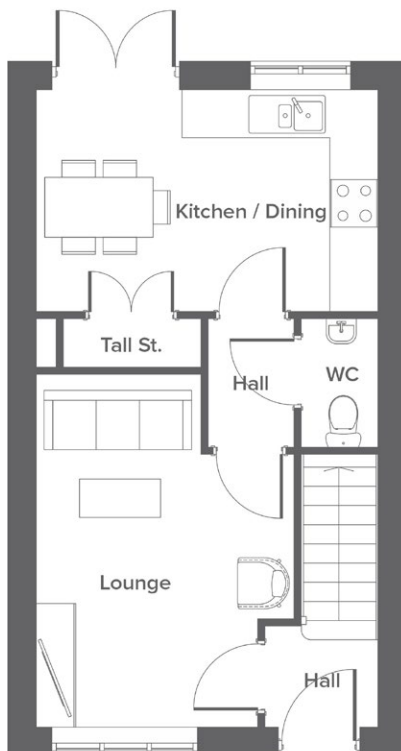
Outright Sale

12

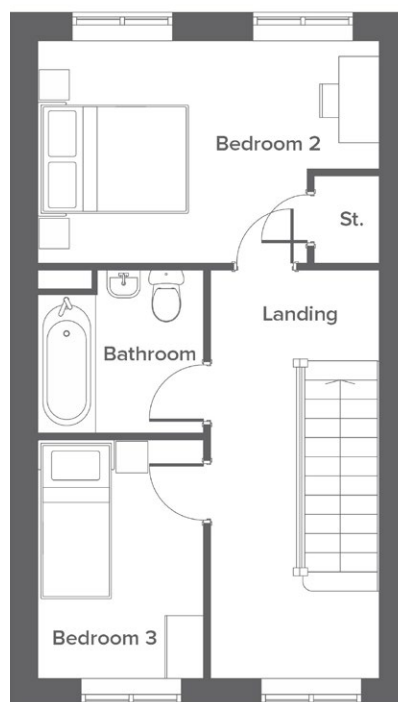
The Willow Orchard View

3-bedroom home, sleeps 5

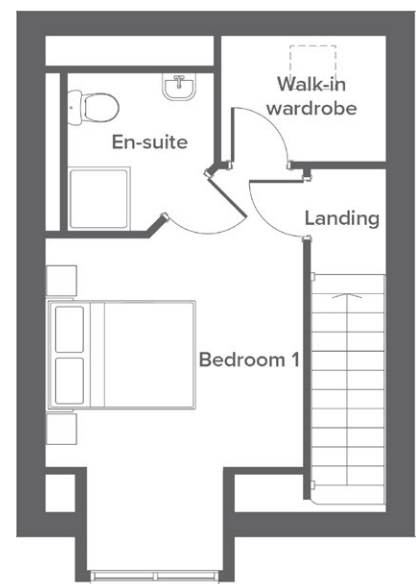
Ground floor



First floor



Second floor



| Room | Metric | Imperial |
|----------------|-----------|---------------|
| Kitchen/Dining | 4.3 x 2.8 | 14'2" x 9'2" |
| Lounge | 3.2 x 4.4 | 10'8" x 14'7" |
| W.C. | 1.0 x 1.6 | 3'3" x 5'2" |

| Room | Metric | Imperial |
|-----------|-----------|---------------|
| Bedroom 2 | 4.3 x 2.8 | 14'2" x 9'3" |
| Bedroom 3 | 2.1 x 3.0 | 6'11" x 9'11" |
| Bathroom | 2.1 x 2.0 | 6'11" x 6'9" |

| Room | Metric | Imperial |
|------------------|-----------|---------------|
| Bedroom 1 | 3.2 x 5.0 | 10'8" x 16'5" |
| En-suite | 1.8 x 2.0 | 6'1" x 6'7" |
| Walk-in wardrobe | 2.1 x 1.6 | 6'11" x 5'2" |

Total size **90 m² / 969 ft²**

Get in touch

 01606 218072

 yourhousinggroup.co.uk

 @yourhousing

 yourhousinggroup