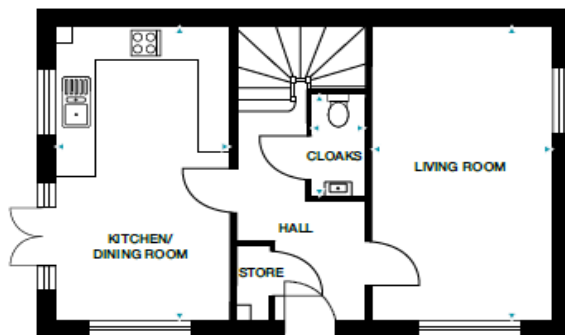


NUTMEG

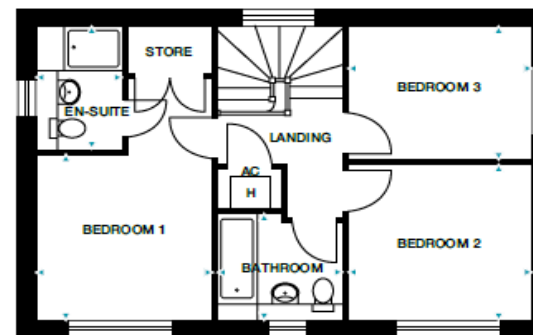
3 bedroom home

Plots 1, 11, 12, 14 and 78



GROUND FLOOR

Kitchen/Dining Room 2970mm x 5422mm (max) 9'9" x 17'9" (max)
Living Room 3106mm x 5422mm 10'2" x 17'9"
Cloaks 895mm x 1900mm (max) 2'11" x 6'3" (max)



FIRST FLOOR

Bedroom 1 3031mm x 3051mm 9'11" x 10'0"
En-Suite 1450mm x 2270mm (max) 4'9" x 7'5" (max)
Bedroom 2 3167mm x 2861mm 10'5" x 9'5"
Bedroom 3 3167mm x 2472mm 10'5" x 8'1"
Bathroom 2172mm x 1940mm (max) 7'2" x 6'4" (max)

Please note: Plots 11, 12, 14 and 78 are handed.

Dimensions stated are within 50mm (2") but should not be used as a basis for furnishings, furniture or appliance spaces etc. Dimensions for such purposes must be verified against actual site measurements. Please note the handing of plots may vary from the floor plans shown. Please check individual plot details with our sales team.