



★  
Home  
Sweet  
Home

Shared ownership in Hampshire  
**Lakedale, Whiteley**

ASTER  
GROUP

# Contents



Introduction

Site plan

Area map

2 bedroom homes

Your customer journey starts here...

What's included with our new homes

Things to know

Contact Information



## Are you looking for a new home in Whiteley, Hampshire?



This wonderful new development is a phase part of the newly created community in Whiteley. You'll find Lakedale situated on the edge of Whiteley and is less than 10 miles from Portsmouth and Southampton. With great road links to the nearby market town of Fareham and the M27 you'll have easy access to the vibrant coastal city of Portsmouth and further afield to London. Southampton can be reached via the A27 in just 9 miles and Botley train station is just a couple of miles from the development which offers regular services to London Waterloo, Portsmouth and Southampton. The nearby A31 also connects Southampton directly to Central London.





Available Shared  
Ownership Homes

155  
156

155  
156  
155  
156

Site Plan

Distances and locations are approximate.



Swanwick Train Station  
**2.4 miles**



Lidl Supermarket  
**1.7 miles**



Cornerstone Primary School  
**0.1 miles**



M27  
**2 miles**



Whiteley Shopping Centre  
**1.1 miles**



The Whiteley Surgery  
**2 miles**

## 1. Ground Floor

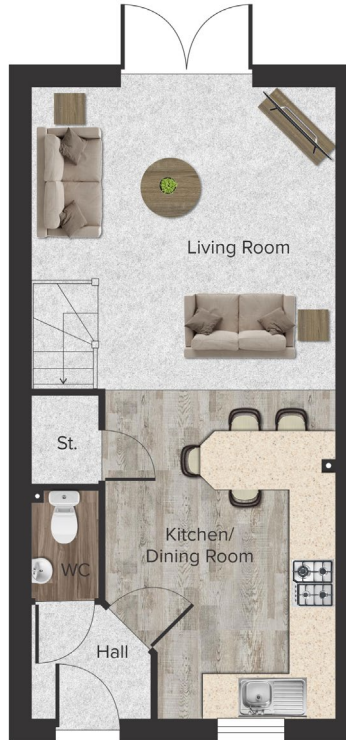
<b>Total:</b>	<b>35.5 sq m</b>
<b>Kitchen/Dining:</b>	<b>3.16m x 4.45m</b>
<b>Living Room:</b>	<b>4.18m x 4.14m</b>
<b>WC:</b>	<b>0.90m x 1.48m</b>

## 2. First Floor

<b>Total:</b>	<b>35.5 sq m</b>
<b>Bedroom 1:</b>	<b>3.41m x 3.77m</b>
<b>Bedroom 2:</b>	<b>4.18m x 2.60m</b>
<b>Bathroom:</b>	<b>1.88m x 2.12m</b>

2 bedroom home.

1.



2.

**Plot 155**



All floor plans are representative only and may be subject to change.

All measurements are approximate. Some plots may be handed.

All measurement are in metres.

St = Storage. C = Cupboard.

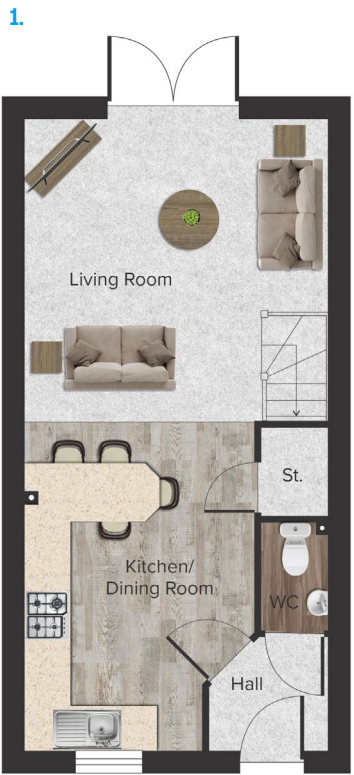
# 1. Ground Floor

Total:	35.5 sq m
Kitchen/Dining:	3.16m x 4.45m
Living Room:	4.18m x 4.14m
WC:	0.90m x 1.48m

# 2. First Floor

Total:	35.5 sq m
Bedroom 1:	3.41m x 3.77m
Bedroom 2:	4.18m x 2.60m
Bathroom:	1.88m x 2.12m

# 2 bedroom home.



# Plot 156




All floor plans are representative only and may be subject to change.  
All measurements are approximate. Some plots may be handed.  
All measurement are in metres.  
St = Storage. C = Cupboard.



Shared Ownership in  
**Whiteley**  
Lakedale





A person is sitting on a couch, and a dog is lying on their feet. The dog is looking up at the person's hand, which is resting on its head. The person is wearing grey pants and grey slippers with star patterns. The dog is wearing a white sweater. The background is a blurred indoor setting.

**Get yourself on the property  
ladder with ease thanks to  
shared ownership**

ASTER  
GROUP

# You customer journey starts here...

01.

What happens when you buy a shared ownership home?



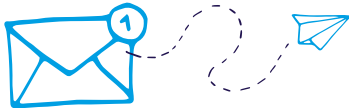
02.

Start by registering your details with Aster.



03.

You'll receive property alerts via email from Aster that match your requirements.



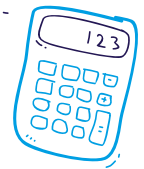
04.



Once you've found your perfect home, get in touch with our team to find out more.

05.

You'll need an affordability assessment. We can point you in the right direction to do this via [TMP Mortgages](#).



06.

The affordability assessment will work out the maximum share you can afford to buy of your home.



07.



If you are allocated a property, [TMP Mortgages](#) will request the essential documents required to progress your application. More information on this can be found [here](#).

08.

You can now pay your £250 reservation fee!



11.

Sign the legal docs and exchange contracts.



10.

Your solicitor and the Aster Sales Progression team will work together to progress your purchase & prepare your legal documents and contracts.



09.



Apply for a mortgage and instruct a solicitor.

12.

Our team and your solicitors will work towards agreeing your completion date and then you'll be all set to move in.



13.





## What's included with our new homes:



- Fitted kitchen with integrated oven, hob, cooker hood and spaces for your own washing machine and fridge/freezer.
- White bathroom suite (sink, bath, WC) with shower over the bath.
- Vinyl flooring to kitchen area, bathroom and WC (where present).
- Turf to rear garden (where present).
- Openreach connection to the property.
- Wiring for an aerial/Sky dish.



**Home  
Sweet  
Home**



## Things to know:



- Unfortunately, the local authority does not tell us the council tax banding. They will confirm this with you directly after you take ownership.
- Utilities will be connected and up and running. We'll let you know the suppliers either on completion day or shortly before. You'll need to let them know your meter readings shortly after you complete the purchase.
- The Openreach line will be connected at the house. Your chosen phone/broadband supplier will arrange the connection at the other end directly with Openreach.
- Your new home may not show up on postcode searches right away. Don't worry, it will usually appear soon after you move in. This process is handled between the developer, Royal Mail and the local authority.
- Bins will either be provided by the developer or local authority. You may need to order and pay for them. Your sales negotiator will be able to give you more information on this nearer the time you take ownership.
- The property will go through a three stage snagging process by our qualified team. As with all new properties there may be defects that arise through a defect period and you will be given details of how to report these once you move in.
- Spaces for white goods usually accommodate the standard sized fridge/freezer and washing machine and are a minimum width of approximately 600mm. However we would recommend buyers measure the spaces prior to ordering any new appliances.

**Please note, this list is not exhaustive and will sometimes vary from site to site. If you have questions about a specific site or plot, please speak to your sales negotiator.**

Happy Days.

ASTER  
GROUP

Get in touch with Louise Long, Sales Negotiator for Hampshire.

T: 01264 405 630    M: 07799 070 322     @LouiseL\_Aster    [Aster.co.uk/sales](https://www.aster.co.uk/sales)

E: [louise.long@aster.co.uk](mailto:louise.long@aster.co.uk)

 @Sales\_Aster

 /SalesAster

 /SalesAster

 /SalesAster

 /SalesAster

 @AsterSales