

Dimensions

Ground Floor

Total area of home	84 sq m
Kitchen/Dining	3.22 m x 5.41 m
Living Room	3.42 m x 3.00 m
WC	1.17 m x 2.25 m

* All Dimensions are in m

** All measurements are approximate

Dimensions

First Floor

Bedroom 1	2.80 m x 5.40 m
Bedroom 2	3.23 m x 2.94 m
Bedroom 3	3.23 m x 2.36 m
Bathroom	1.76 m x 1.93 m

* All Dimensions are in m

** All measurements are approximate



Ground Floor



First Floor

*While we endeavour to make our property plans fair, accurate and reliable, they are only a general guide to the property and may be subject to change. Some plots may also be handed, speak to our team for more information.
**Flooring layouts & materials are for illustrative purposes only and maybe subject to change,

Dimensions

Ground Floor

Total area of home	84 sq m
Kitchen/Dining	3.22 m x 5.41 m
Living Room	3.42 m x 3.00 m
WC	1.17 m x 2.25 m

* All Dimensions are in m

** All measurements are approximate

Dimensions

First Floor

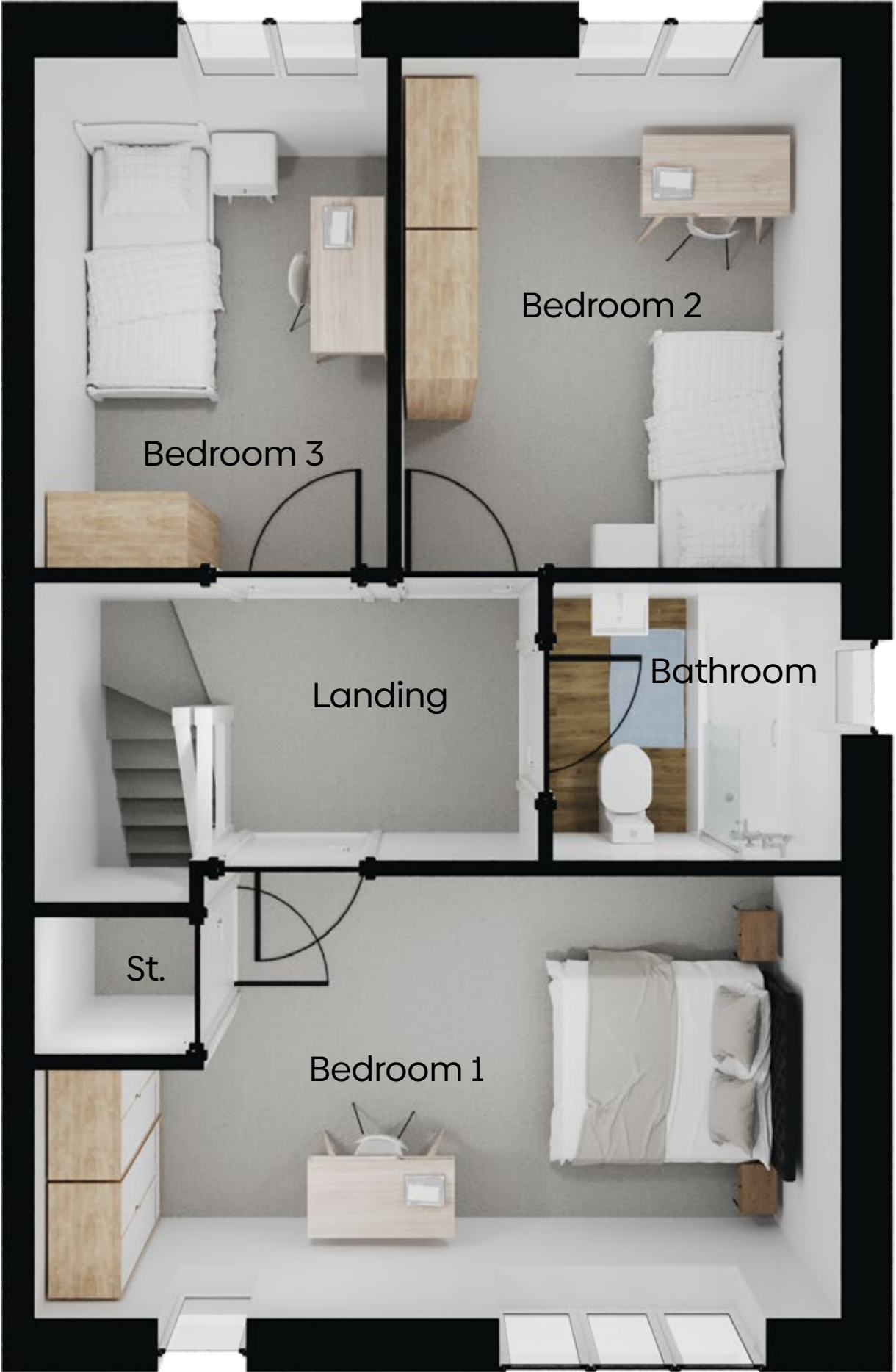
Bedroom 1	2.80 m x 5.40 m
Bedroom 2	3.23 m x 2.94 m
Bedroom 3	3.23 m x 2.36 m
Bathroom	1.76 m x 1.93 m

* All Dimensions are in m

** All measurements are approximate



Ground Floor



First Floor

*While we endeavour to make our property plans fair, accurate and reliable, they are only a general guide to the property and may be subject to change. Some plots may also be handed, speak to our team for more information.
**Flooring layouts & materials are for illustrative purposes only and maybe subject to change,

Dimensions

Ground Floor

Total area of home	69.98 sq m
Living/Dining	4.90 m x 4.35 m
Kitchen	3.27 m x 2.22 m
WC	2.50 m x 0.87 m

* All Dimensions are in m

** All measurements are approximate



Ground Floor



First Floor

Dimensions

First Floor

Bedroom 1	3.16 m x 4.36 m
Bedroom 2	2.87 m x 4.36 m
Bathroom	2.03 m x 2.16 m

* All Dimensions are in m

** All measurements are approximate

*While we endeavour to make our property plans fair, accurate and reliable, they are only a general guide to the property and may be subject to change. Some plots may also be handed, speak to our team for more information.
**Flooring layouts & materials are for illustrative purposes only and maybe subject to change,

Dimensions

Ground Floor

Total area of home	69.98 sq m
Living/Dining	4.90 m x 4.35 m
Kitchen	3.27 m x 2.22 m
WC	2.50 m x 0.87 m

* All Dimensions are in m

** All measurements are approximate



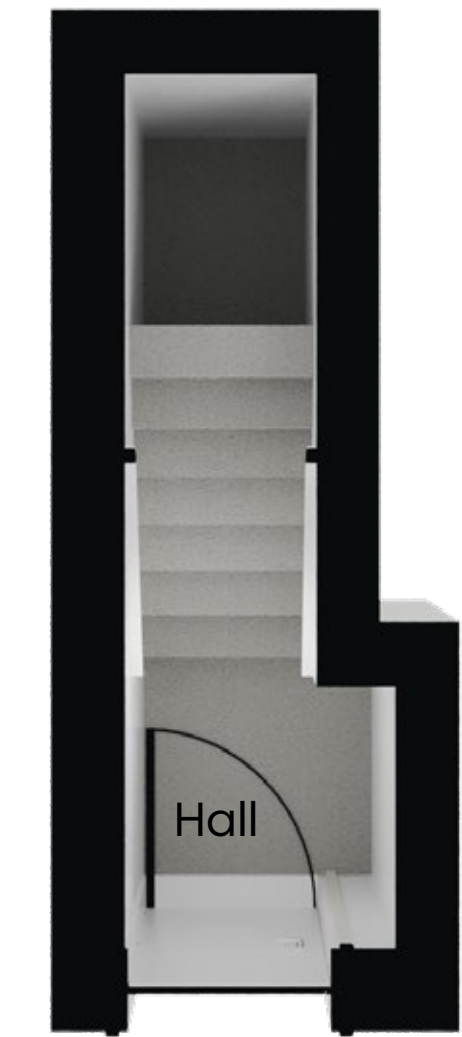
Ground Floor



First Floor

*While we endeavour to make our property plans fair, accurate and reliable, they are only a general guide to the property and may be subject to change. Some plots may also be handed, speak to our team for more information.
**Flooring layouts & materials are for illustrative purposes only and maybe subject to change,

Dimensions	
First Floor	
Total area of home	69.98 sq m
Kitchen/Dining	3.31 m x 3.93 m
Living Room	3.15 m x 3.93 m
Bedroom 1	3.21 m x 3.51 m
Bathroom	1.97 m x 2.34 m
* All Dimensions are in m	
** All measurements are approximate	



Ground Floor



First Floor

*While we endeavour to make our property plans fair, accurate and reliable, they are only a general guide to the property and may be subject to change. Some plots may also be handed, speak to our team for more information.
**Flooring layouts & materials are for illustrative purposes only and maybe subject to change,

Dimensions	
Ground Floor	
Total area of home	69.98 sq m
Kitchen/Dining	3.31 m x 3.93 m
Living Room	3.15 m x 3.93 m
Bedroom 1	3.21 m x 3.51 m
Bathroom	1.97 m x 2.34 m
* All Dimensions are in m	
** All measurements are approximate	



First Floor

*While we endeavour to make our property plans fair, accurate and reliable, they are only a general guide to the property and may be subject to change. Some plots may also be handed, speak to our team for more information.

**Flooring layouts & materials are for illustrative purposes only and maybe subject to change,

Dimensions

Ground Floor

Total area of home	106 sq m
Living Room	4.30 m x 3.68 m
Kitchen	3.09 m x 2.72 m
Dining	4.28 m x 3.68 m
WC	1.77 m x 1.11 m

* All Dimensions are in m

** All measurements are approximate

Dimensions

First Floor

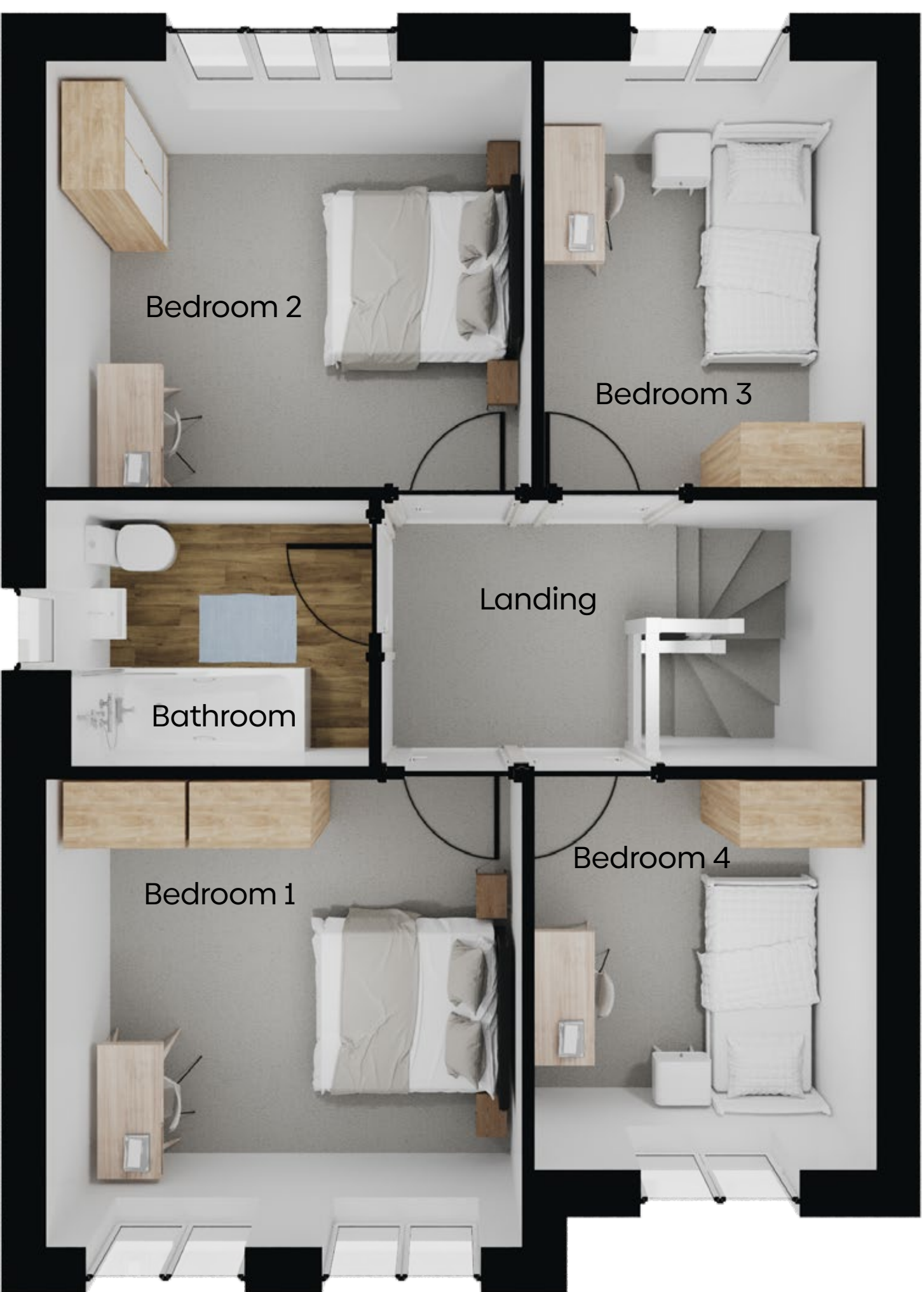
Bedroom 1	3.43 m x 3.68 m
Bedroom 2	3.12 m x 3.76 m
Bedroom 3	3.12 m x 2.57 m
Bedroom 4	2.86 m x 2.65 m
Bathroom	1.95 m x 2.50 m

* All Dimensions are in m

** All measurements are approximate



Ground Floor



First Floor

*While we endeavour to make our property plans fair, accurate and reliable, they are only a general guide to the property and may be subject to change. Some plots may also be handed, speak to our team for more information.
**Flooring layouts & materials are for illustrative purposes only and maybe subject to change,

Dimensions

Ground Floor

Total area of home	84 sq m
Kitchen/Dining	3.22 m x 5.41 m
Living Room	3.42 m x 3.00 m
WC	1.17 m x 2.25 m

* All Dimensions are in m

** All measurements are approximate

Dimensions

First Floor

Bedroom 1	2.80 m x 5.40 m
Bedroom 2	3.23 m x 2.94 m
Bedroom 3	3.23 m x 2.36 m
Bathroom	1.76 m x 1.93 m

* All Dimensions are in m

** All measurements are approximate



Ground Floor



First Floor

*While we endeavour to make our property plans fair, accurate and reliable, they are only a general guide to the property and may be subject to change. Some plots may also be handed, speak to our team for more information.
**Flooring layouts & materials are for illustrative purposes only and maybe subject to change,

Dimensions

Ground Floor

Total area of home	84 sq m
Kitchen/Dining	3.22 m x 5.41 m
Living Room	3.42 m x 3.00 m
WC	1.17 m x 2.25 m

* All Dimensions are in m

** All measurements are approximate

Dimensions

First Floor

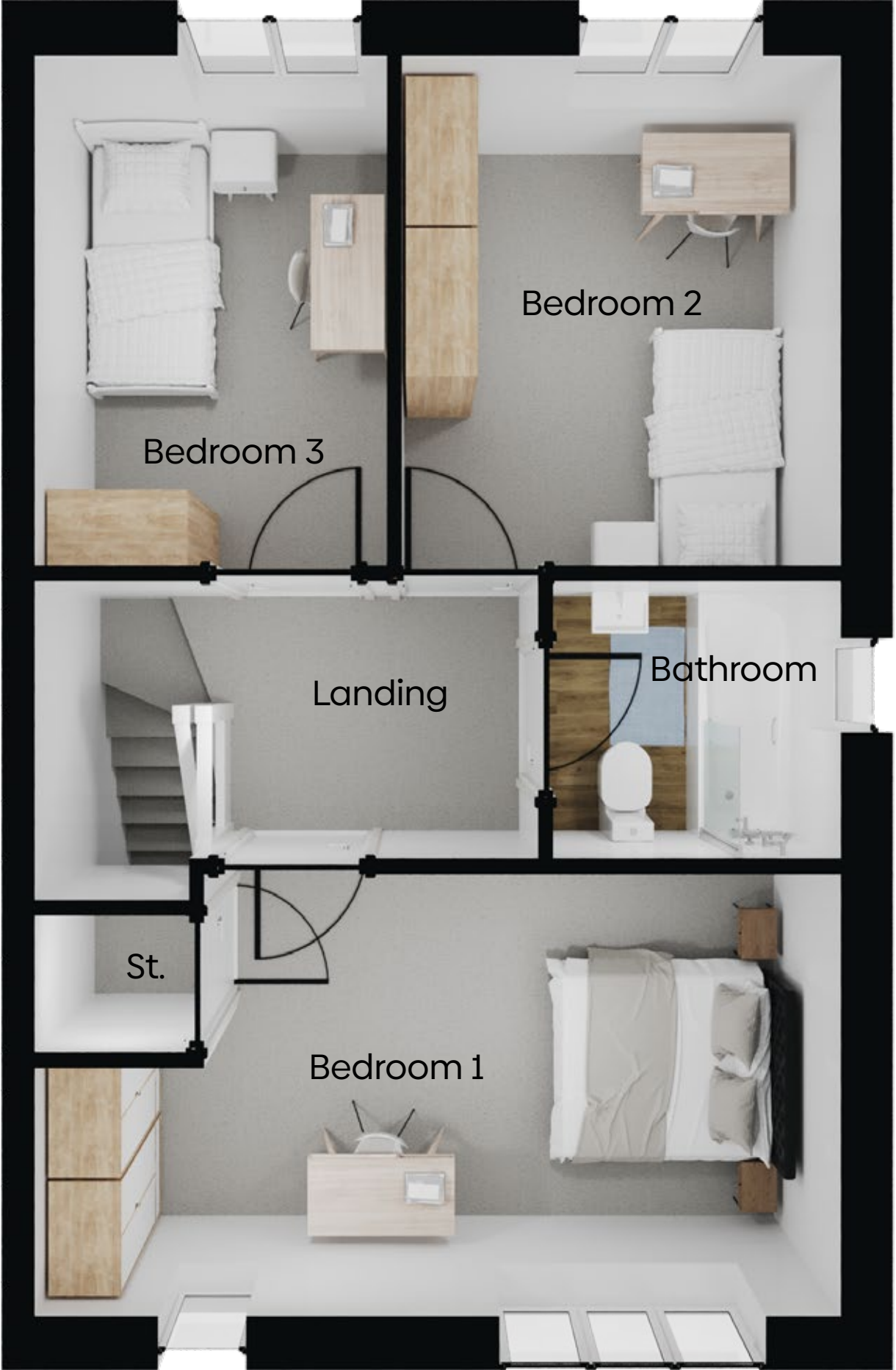
Bedroom 1	2.80 m x 5.40 m
Bedroom 2	3.23 m x 2.94 m
Bedroom 3	3.23 m x 2.36 m
Bathroom	1.76 m x 1.93 m

* All Dimensions are in m

** All measurements are approximate



Ground Floor



First Floor

*While we endeavour to make our property plans fair, accurate and reliable, they are only a general guide to the property and may be subject to change. Some plots may also be handed, speak to our team for more information.
**Flooring layouts & materials are for illustrative purposes only and maybe subject to change,

Dimensions

Ground Floor

Total area of home	106 sq m
Living Room	4.30 m x 3.68 m
Kitchen	3.09 m x 2.72 m
Dining	4.28 m x 3.68 m
WC	1.77 m x 1.11 m

* All Dimensions are in m

** All measurements are approximate

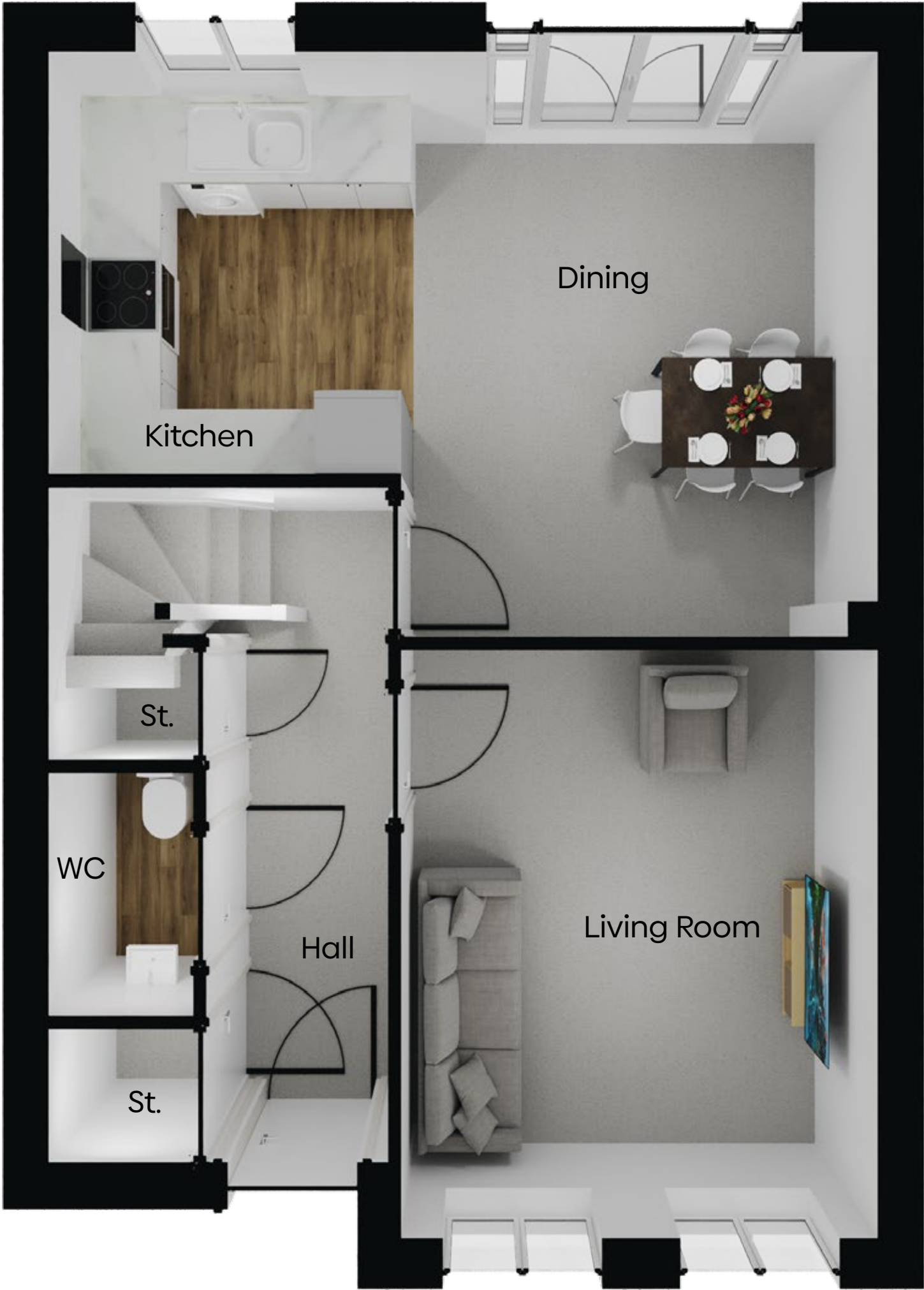
Dimensions

First Floor

Bedroom 1	3.43 m x 3.68 m
Bedroom 2	3.12 m x 3.76 m
Bedroom 3	3.12 m x 2.57 m
Bedroom 4	2.86 m x 2.65 m
Bathroom	1.95 m x 2.50 m

* All Dimensions are in m

** All measurements are approximate



Ground Floor



First Floor

*While we endeavour to make our property plans fair, accurate and reliable, they are only a general guide to the property and may be subject to change. Some plots may also be handed, speak to our team for more information.
**Flooring layouts & materials are for illustrative purposes only and maybe subject to change,

Dimensions

Ground Floor

Total area of home	106 sq m
Living Room	4.30 m x 3.68 m
Kitchen	3.09 m x 2.72 m
Dining	4.28 m x 3.68 m
WC	1.77 m x 1.11 m

* All Dimensions are in m

** All measurements are approximate

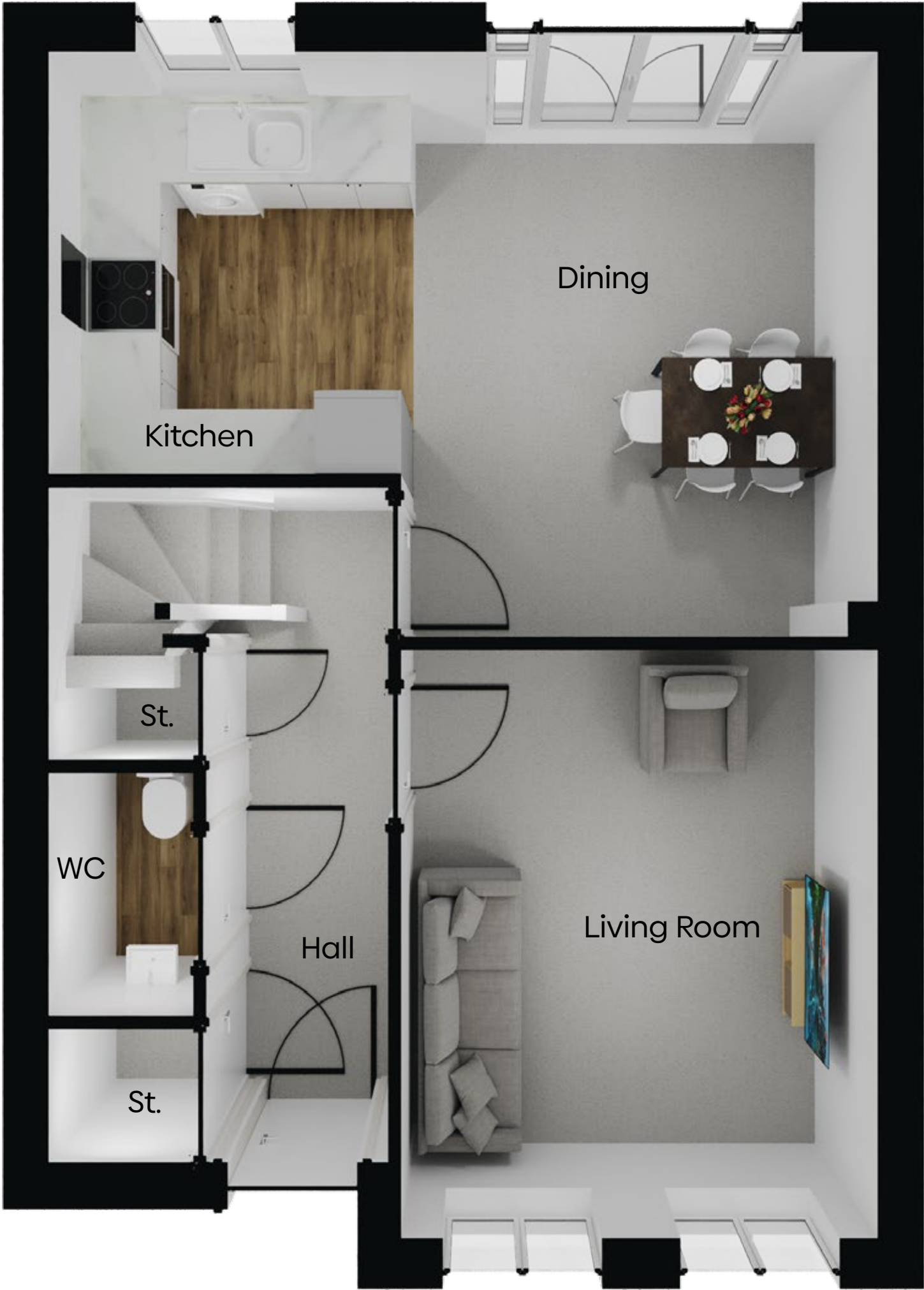
Dimensions

First Floor

Bedroom 1	3.43 m x 3.68 m
Bedroom 2	3.12 m x 3.76 m
Bedroom 3	3.12 m x 2.57 m
Bedroom 4	2.86 m x 2.65 m
Bathroom	1.95 m x 2.50 m

* All Dimensions are in m

** All measurements are approximate



Ground Floor



First Floor

*While we endeavour to make our property plans fair, accurate and reliable, they are only a general guide to the property and may be subject to change. Some plots may also be handed, speak to our team for more information.
**Flooring layouts & materials are for illustrative purposes only and maybe subject to change,

Dimensions

Ground Floor

Total area of home	69.98 sq m
Living/Dining	4.90 m x 4.35 m
Kitchen	3.27 m x 2.22 m
WC	2.50 m x 0.87 m

* All Dimensions are in m

** All measurements are approximate

Dimensions

First Floor

Bedroom 1	3.16 m x 4.36 m
Bedroom 2	2.87 m x 4.36 m
Bathroom	2.03 m x 2.16 m

* All Dimensions are in m

** All measurements are approximate



Ground Floor



First Floor

*While we endeavour to make our property plans fair, accurate and reliable, they are only a general guide to the property and may be subject to change. Some plots may also be handed, speak to our team for more information.
**Flooring layouts & materials are for illustrative purposes only and maybe subject to change,

Dimensions

Ground Floor

Total area of home	69.98 sq m
Living/Dining	4.90 m x 4.35 m
Kitchen	3.27 m x 2.22 m
WC	2.50 m x 0.87 m

* All Dimensions are in m

** All measurements are approximate

Dimensions

First Floor

Bedroom 1	3.16 m x 4.36 m
Bedroom 2	2.87 m x 4.36 m
Bathroom	2.03 m x 2.16 m

* All Dimensions are in m

** All measurements are approximate



Ground Floor



First Floor

*While we endeavour to make our property plans fair, accurate and reliable, they are only a general guide to the property and may be subject to change. Some plots may also be handed, speak to our team for more information.
**Flooring layouts & materials are for illustrative purposes only and maybe subject to change,

Dimensions

Ground Floor

Total area of home	69.98 sq m
Living/Dining	4.90 m x 4.35 m
Kitchen	3.27 m x 2.22 m
WC	2.50 m x 0.87 m

* All Dimensions are in m

** All measurements are approximate

Dimensions

First Floor

Bedroom 1	3.16 m x 4.36 m
Bedroom 2	2.87 m x 4.36 m
Bathroom	2.03 m x 2.16 m

* All Dimensions are in m

** All measurements are approximate



Ground Floor



First Floor

*While we endeavour to make our property plans fair, accurate and reliable, they are only a general guide to the property and may be subject to change. Some plots may also be handed, speak to our team for more information.
**Flooring layouts & materials are for illustrative purposes only and maybe subject to change,

Dimensions

Ground Floor

Total area of home	69.98 sq m
Living/Dining	4.90 m x 4.35 m
Kitchen	3.27 m x 2.22 m
WC	2.50 m x 0.87 m

* All Dimensions are in m

** All measurements are approximate



Ground Floor



First Floor

*While we endeavour to make our property plans fair, accurate and reliable, they are only a general guide to the property and may be subject to change. Some plots may also be handed, speak to our team for more information.

**Flooring layouts & materials are for illustrative purposes only and maybe subject to change,

Dimensions

Ground Floor

Total area of home	84 sq m
Kitchen/Dining	3.22 m x 5.41 m
Living Room	3.42 m x 3.00 m
WC	1.17 m x 2.25 m

* All Dimensions are in m

** All measurements are approximate

Dimensions

First Floor

Bedroom 1	2.80 m x 5.40 m
Bedroom 2	3.23 m x 2.94 m
Bedroom 3	3.23 m x 2.36 m
Bathroom	1.76 m x 1.93 m

* All Dimensions are in m

** All measurements are approximate



Ground Floor



First Floor

*While we endeavour to make our property plans fair, accurate and reliable, they are only a general guide to the property and may be subject to change. Some plots may also be handed, speak to our team for more information.
**Flooring layouts & materials are for illustrative purposes only and maybe subject to change,

Dimensions

Ground Floor

Total area of home	84 sq m
Kitchen/Dining	3.22 m x 5.41 m
Living Room	3.42 m x 3.00 m
WC	1.17 m x 2.25 m

* All Dimensions are in m

** All measurements are approximate

Dimensions

First Floor

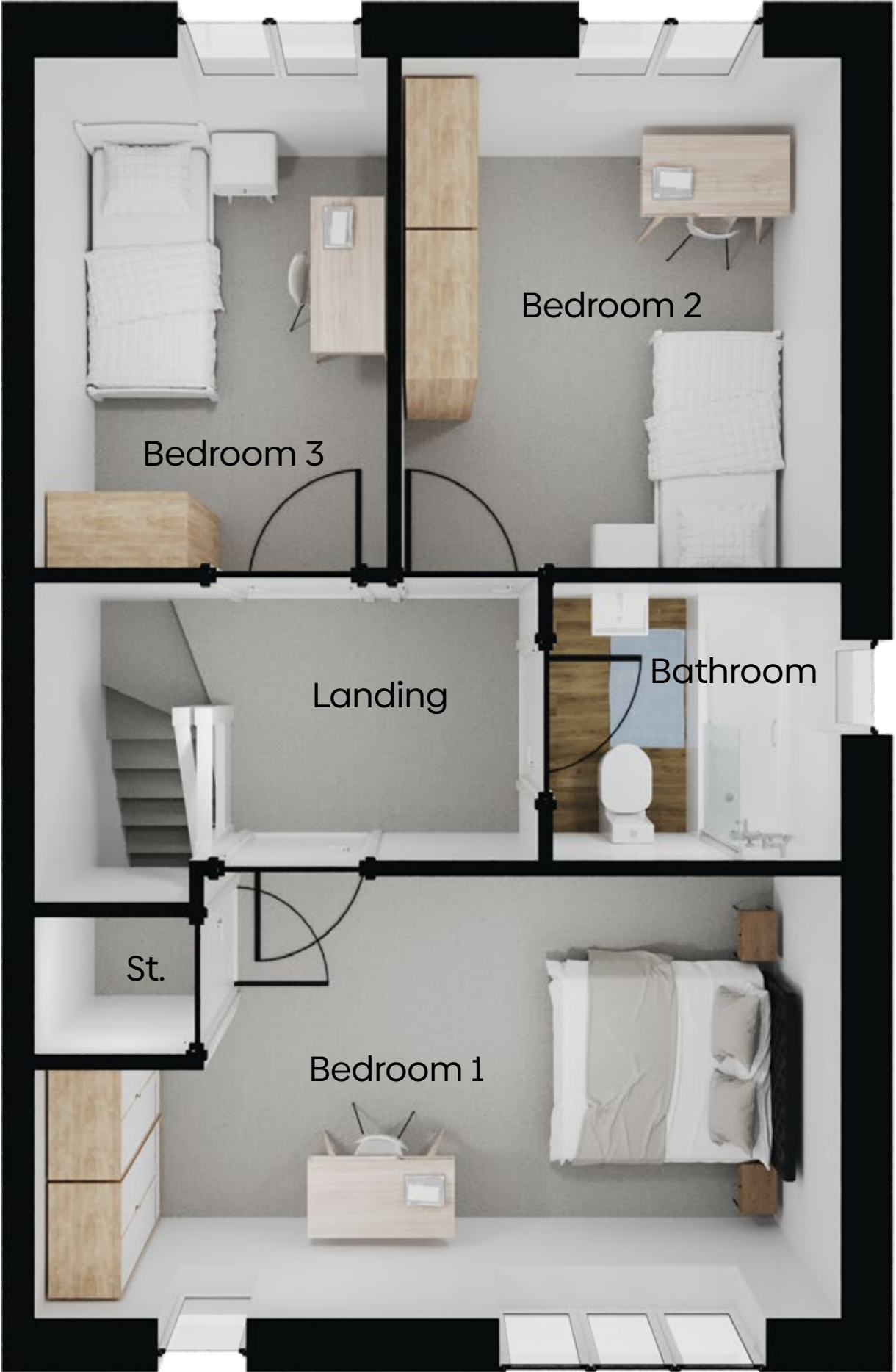
Bedroom 1	2.80 m x 5.40 m
Bedroom 2	3.23 m x 2.94 m
Bedroom 3	3.23 m x 2.36 m
Bathroom	1.76 m x 1.93 m

* All Dimensions are in m

** All measurements are approximate



Ground Floor



First Floor

*While we endeavour to make our property plans fair, accurate and reliable, they are only a general guide to the property and may be subject to change. Some plots may also be handed, speak to our team for more information.
**Flooring layouts & materials are for illustrative purposes only and maybe subject to change,

Dimensions

Ground Floor

Total area of home	84 sq m
Kitchen/Dining	3.22 m x 5.41 m
Living Room	3.42 m x 3.00 m
WC	1.17 m x 2.25 m

* All Dimensions are in m

** All measurements are approximate

Dimensions

First Floor

Bedroom 1	2.80 m x 5.40 m
Bedroom 2	3.23 m x 2.94 m
Bedroom 3	3.23 m x 2.36 m
Bathroom	1.76 m x 1.93 m

* All Dimensions are in m

** All measurements are approximate



Ground Floor



First Floor

*While we endeavour to make our property plans fair, accurate and reliable, they are only a general guide to the property and may be subject to change. Some plots may also be handed, speak to our team for more information.
**Flooring layouts & materials are for illustrative purposes only and maybe subject to change,