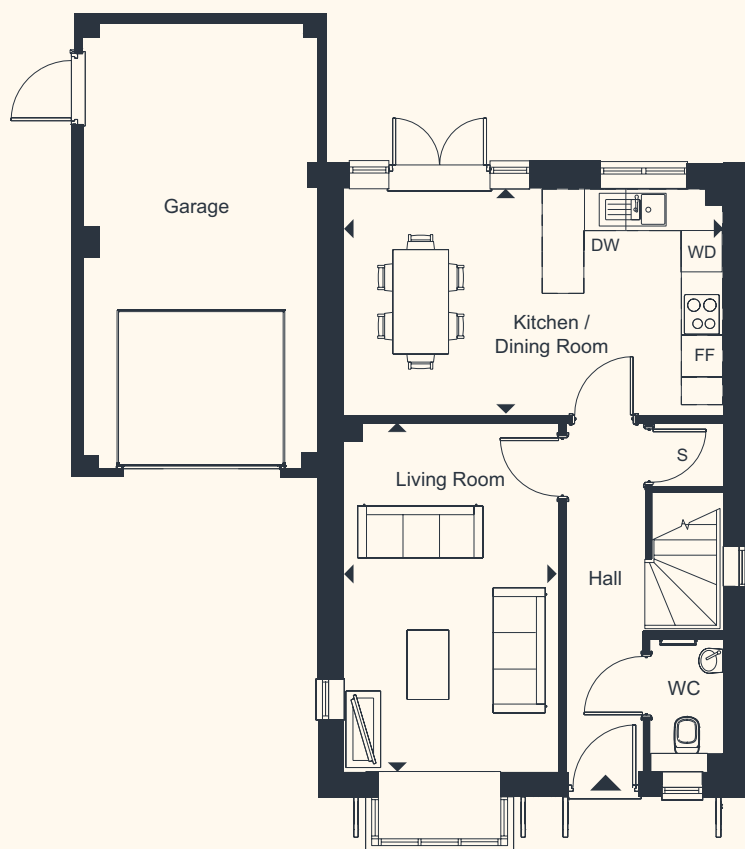
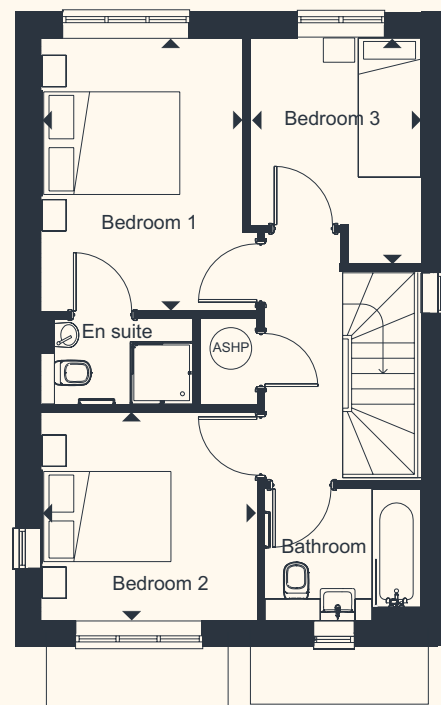


Three bedroom house 4 SPRAYS CRESCENT



GROUND FLOOR



FIRST FLOOR

LIVING ROOM
5.02m x 3.11m 16' 6" x 10' 2"

KITCHEN / DINING ROOM
5.47m x 3.27m 17' 11" x 10' 9"

BEDROOM 1
3.95m x 2.91m 12' 11" x 9' 7"

BEDROOM 2
3.11m x 3.02m 10' 3" x 9' 11"

BEDROOM 3
3.28m x 2.47m 10' 9" x 8' 1"

TOTAL AREA
92.9 sq.m. 999 sq.ft.

4 SPRAYS CRESCENT	
GARAGE	Single
PARKING SPACES	2

FF FRIDGE/FREEZER **DW** DISHWASHER
ASHP AIR SOURCE HEAT PUMP **WM** WASHING MACHINE
S STORAGE
 ► Denotes points between the measurements shown

This floor plan is for illustrative purposes and dimensions should only be used as rough guide. External area sizes and locations may differ from those illustrated. Location of windows, doors, bathroom fittings, kitchen units and appliances may differ. Whilst every effort has been taken to ensure the accuracy of the specification, it is for general guidance only and is subject to change. Southern Housing reserves the right to amend the specification as necessary and without notice. Speak to our sales team for more details.