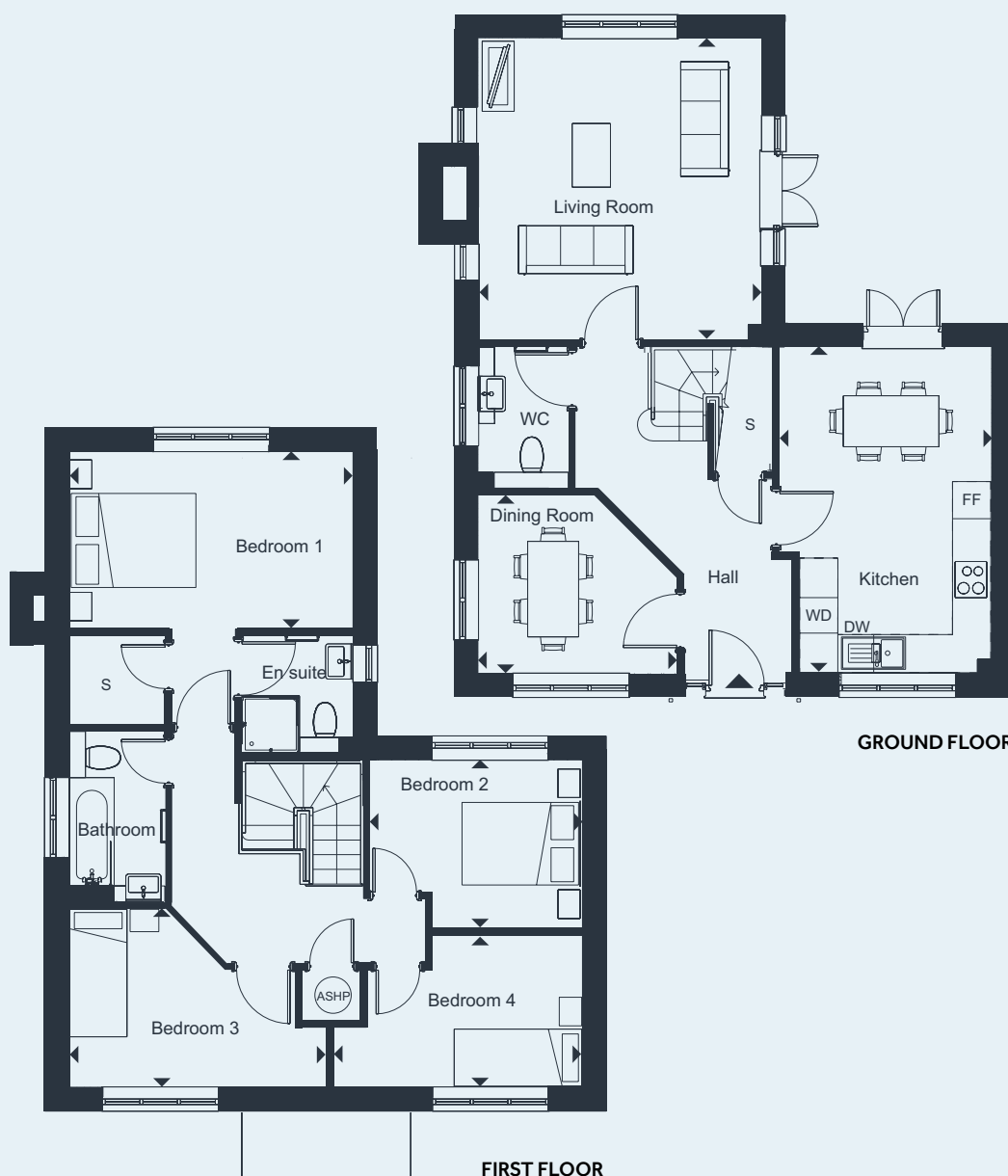


Four bedroom house 3 SPRAYS CRESCENT



LIVING ROOM	
4.75m x 4.46m	15' 7" x 14' 8"

DINING ROOM	
3.13m x 2.80m	10' 3" x 9' 2"

KITCHEN	
5.13m x 3.33m	16' 10" x 10' 11"

BEDROOM 1	
4.46m x 2.79m	14' 8" x 9' 2"

BEDROOM 2	
3.33m x 2.65m	10' 11" x 8' 9"

BEDROOM 3	
4.05m x 2.80m	13' 3" x 9' 2"

BEDROOM 4	
3.92m x 2.39m	12' 10" x 7' 10"

TOTAL AREA	
125.4 sq.m.	1,349 sq.ft.

3 SPRAYS CRESCENT	
GARAGE	Single
PARKING SPACES	2

FF FRIDGE/FREEZER **DW** DISHWASHER
ASHP AIR SOURCE HEAT PUMP **WM** WASHING MACHINE
S STORAGE
▶ Denotes points between the measurements shown

This floor plan is for illustrative purposes and dimensions should only be used as rough guide. External area sizes and locations may differ from those illustrated. Location of windows, doors, bathroom fittings, kitchen units and appliances may differ. Whilst every effort has been taken to ensure the accuracy of the specification, it is for general guidance only and is subject to change. Southern Housing reserves the right to amend the specification as necessary and without notice. Speak to our sales team for more details.