

Prices
from
£149,000

Hazel End, Phase E

Fanshawe Way, Bishops Stortford, Hertfordshire, CM23 1GU

A brand new development of 2, 3 & 4 bedroom houses

//// ParadigmLiving



£ Prices from **£149,000 (400% share)**

% Share available 40%-75%

🛏 2, 3 & 4 bedrooms



Hazel End E KEY FEATURES

Bathroom suite and thermostatic shower

Carpet fitted in the bedrooms & Landing

Tiled flooring in kitchen, vinyl flooring throughout the downstairs

Gas central heating

Allocated parking & Electric Charge Point

Fitted kitchen with integrated oven and hob

Integrated washing machine and fridge freezer

PV Panels

A brand new development with a collection of 2, 3 & 4 bedroom homes. Located on the doorstep is a 16 Acre country park with green open space. A new primary school and nursery located on the outskirts of the Development.



These particulars do not constitute any part of an offer or contract. Any intended purchasers must satisfy themselves as to the correctness of each of the statements contained in these particulars. All floor layouts maybe subject to changes. The dimensions given on the plan are subject to minor variations intended for guidance only and are not be used for carpets, appliances or items of furniture.

SPECIFICATION

KITCHEN

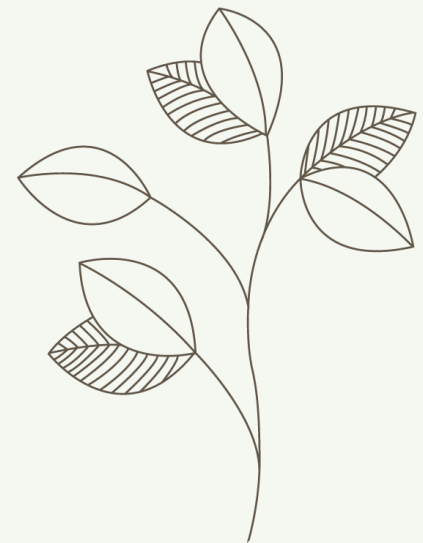
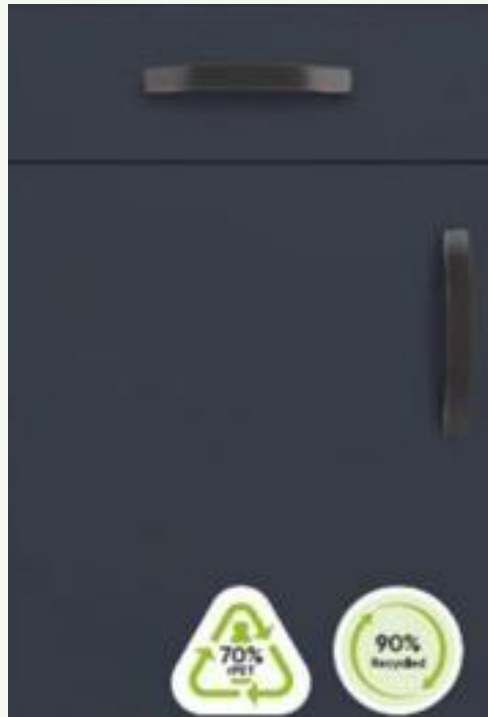
MANUFACTURER
Symphony kitchen, Urban

COLOUR
Indigo

HANDLES
Brushed bronze arched bridge handle

WORK TOP
**Symphony kitchen, 40mm
laminate Artic Marble**

The specifications and information provided herein are for general informational purposes only and are subject to change without notice. Actual product colours may vary slightly due to differences in screen settings, lighting conditions, and the nature of physical materials. We strive for accuracy but cannot guarantee that digital imagery precisely reflects the final product.



SPECIFICATION

FLOORING

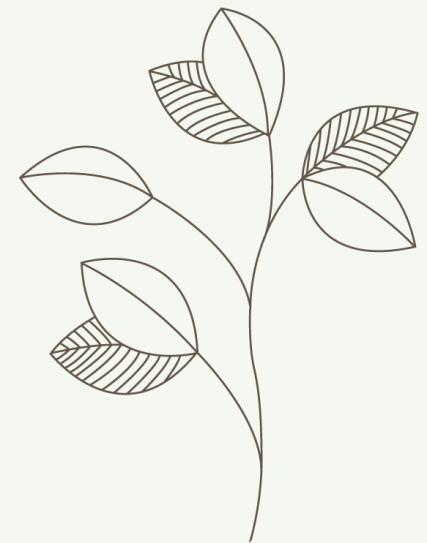
VINYL BRAND
Amtico

COLOUR
Trent Oak

CARPET BRAND
**Abingdon Oakdale Supreme
80/20**

COLOUR
Cool Slate

The specifications and information provided herein are for general informational purposes only and are subject to change without notice. Actual product colours may vary slightly due to differences in screen settings, lighting conditions, and the nature of physical materials. We strive for accuracy but cannot guarantee that digital imagery precisely reflects the final product.





Two Bed House Plots 523 (* handed)

KITCHEN AREA

6'0" x 12'4" 1.85m x 3.78m

LIVING ROOM

14'2" x 14'8" 4.32m x 4.48m

BEDROOM 1

14'2" x 10'3" 4.32m x 3.14m

BEDROOM 2

14'4" x 9'1" 4.37m x 2.78m



These particulars do not constitute any part of an offer or contract. Any intended purchasers must satisfy themselves as to the correctness of each of the statements contained in these particulars. All floor layouts maybe subject to changes. The dimensions given on the plan are subject to minor variations intended for guidance only and are not be used for carpets, appliances or items of furniture.





Three Bed House Plots 517*

(* handed)

KITCHEN/DINING

16'11" x 10'11" 5.16m x 3.35m

LIVING ROOM

10'0" x 10'7" 3.07m x 3.24m

BEDROOM 1

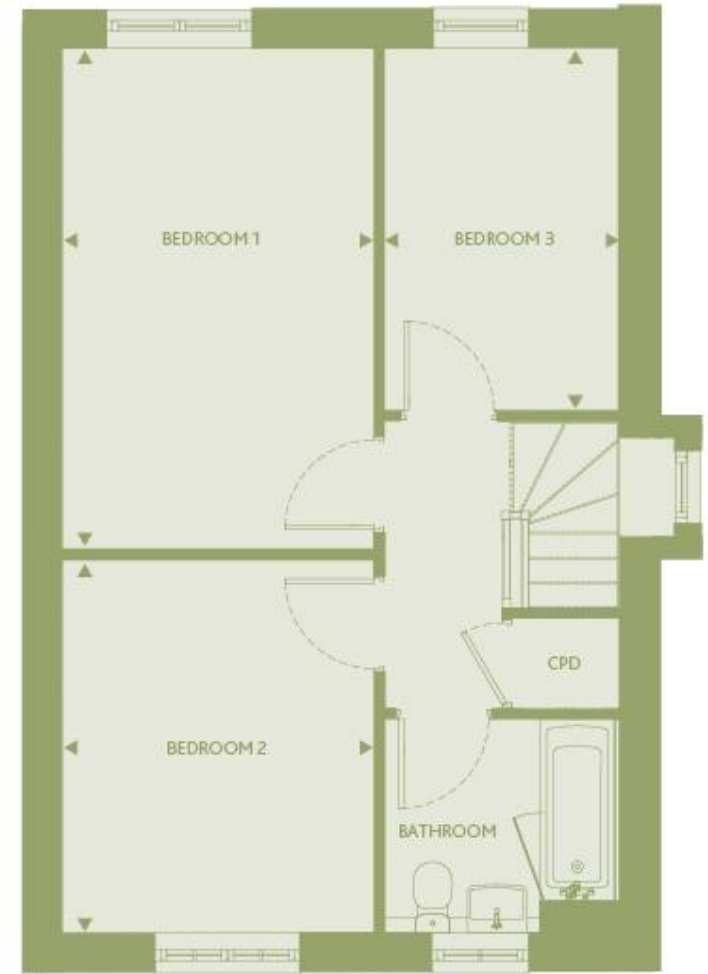
9'6" x 15'2" 2.92m x 4.63m

BEDROOM 2

9'6" x 11'5" 2.92m x 3.49m

BEDROOM 3

7'2" x 11'1" 2.20m x 3.38m



These particulars do not constitute any part of an offer or contract. Any intended purchasers must satisfy themselves as to the correctness of each of the statements contained in these particulars. All floor layouts may be subject to changes. The dimensions given on the plan are subject to minor variations intended for guidance only and are not to be used for carpets, appliances or items of furniture.





Three Bed House Plots 518*, 521 & 522* (* handed)

KITCHEN/DINING

16'11" x 10'11" 5.16m x 3.35m

LIVING ROOM

10'0" x 10'7" 3.07m x 3.24m

BEDROOM 1

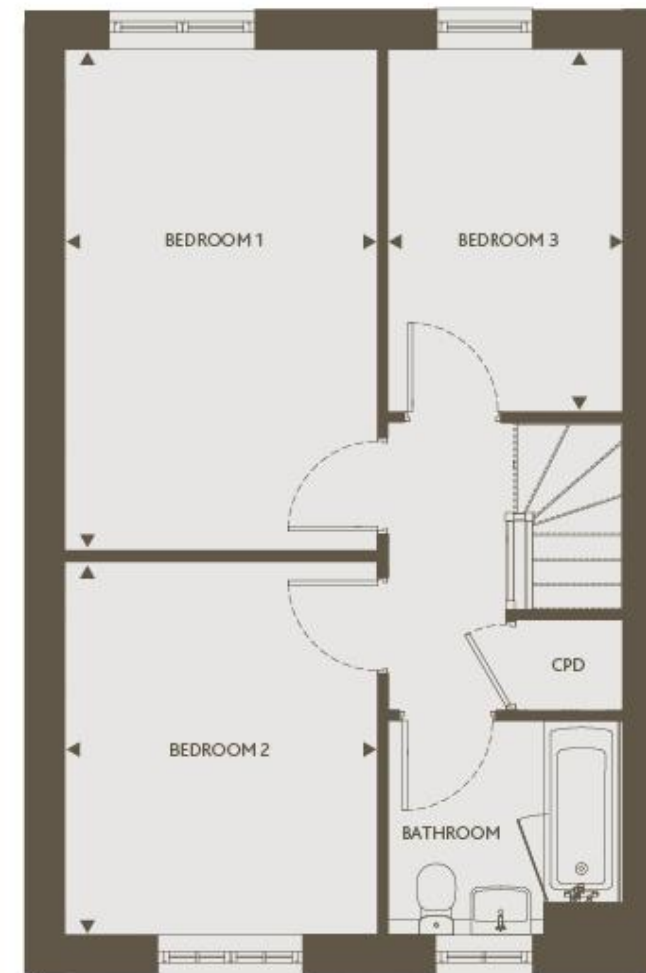
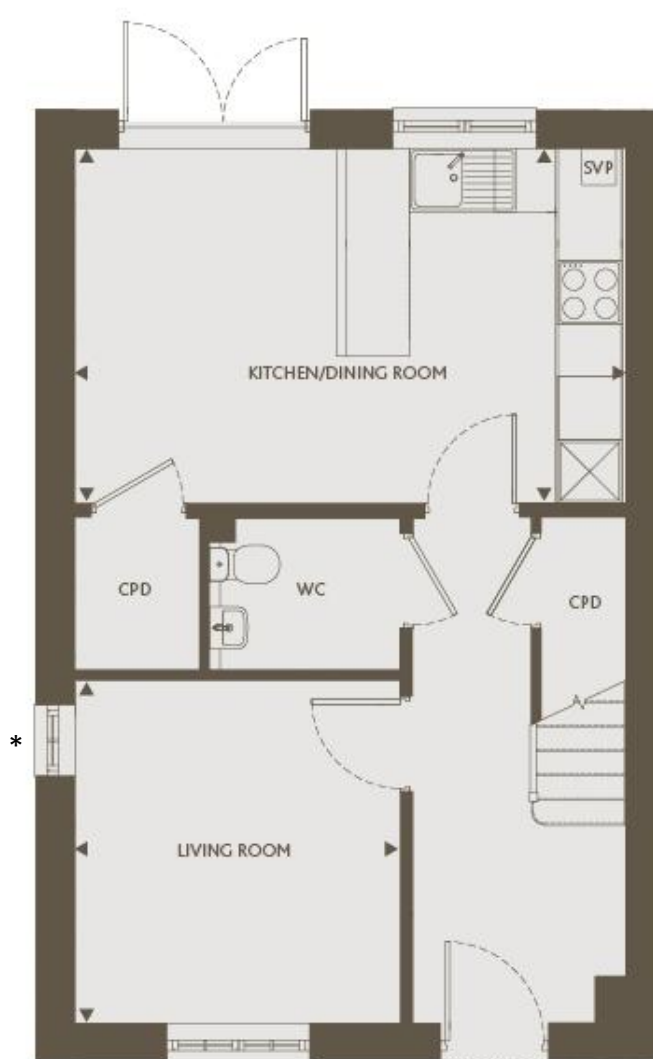
9'6" x 15'2" 2.92m x 4.63m

BEDROOM 2

9'6" x 11'5" 2.92m x 3.49m

BEDROOM 3

7'2" x 11'1" 2.20m x 3.38m



These particulars do not constitute any part of an offer or contract. Any intended purchasers must satisfy themselves as to the correctness of each of the statements contained in these particulars. All floor layouts may be subject to changes. The dimensions given on the plan are subject to minor variations intended for guidance only and are not be used for carpets, appliances or items of furniture.

* no window to plots 521 & 522





Four Bed House Plots 525*, 526* & 527 (* handed)

KITCHEN/DINING

19'4" x 12'6" 5.90m x 3.83m

LIVING ROOM

12'3" x 11'10" 3.75m x 3.62m

BEDROOM 1

10'11" x 11'6" 3.34m x 3.51m

BEDROOM 2

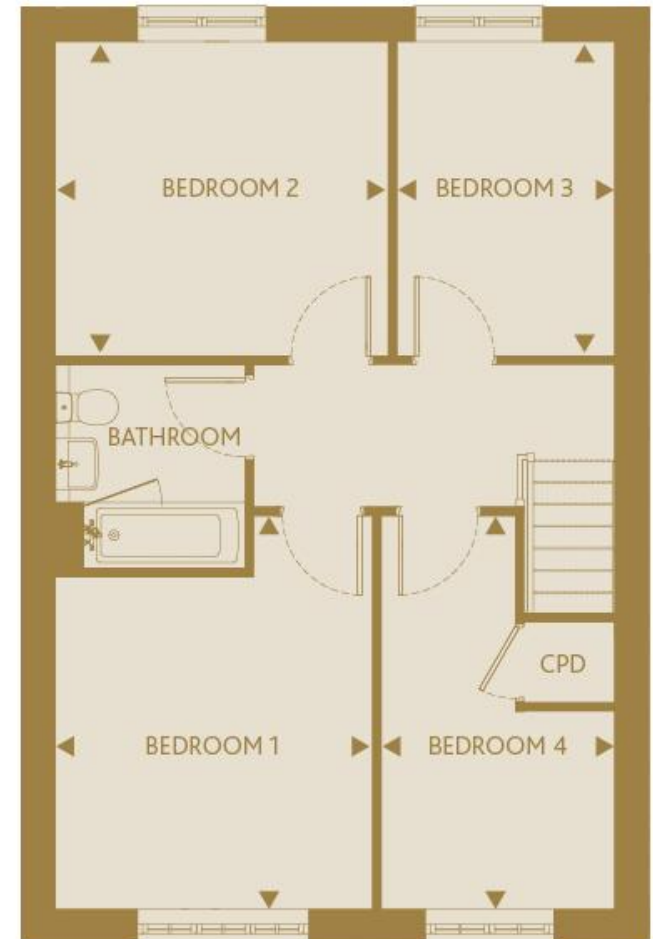
11'6" x 10'10" 3.51m x 3.32m

BEDROOM 3

7'6" x 10'10" 2.30m x 3.32m

BEDROOM 4

8'0" x 13'7" 2.46m x 4.16m



These particulars do not constitute any part of an offer or contract. Any intended purchasers must satisfy themselves as to the correctness of each of the statements contained in these particulars. All floor layouts may be subject to changes. The dimensions given on the plan are subject to minor variations intended for guidance only and are not to be used for carpets, appliances or items of furniture.

* no window to plot 526





SITE PLAN



Key:



Affordable rented properties

These particulars do not constitute any part of an offer or contract. Any intended purchasers must satisfy themselves as to the correctness of each of the statements contained in these particulars. All floor layouts may be subject to changes. The dimensions given on the plan are subject to minor variations intended for guidance only and are not to be used for carpets, appliances or items of furniture.



For more information

0300 303 8046

www.paradigmliving.co.uk

These particulars do not constitute any part of an offer or contract. Any intended purchasers must satisfy themselves as to the correctness of each of the statements contained in these particulars. All floor layouts maybe subject to changes. The dimensions given on the plan are subject to minor variations intended for guidance only and are not be used for carpets, appliances or items of furniture.

