

# The Poppy B Orchard View

2-bedroom home, sleeps 4



2 | 

2 | 

1 | 



Artist's impression

## Key features

- Two double bedrooms
- Downstairs W.C.
- En-suite from master bedroom
- Open plan kitchen and dining room
- Separate living room



**The Poppy B**  
Available plots  
**Shared Ownership**  
22, 37, 330, 378, 379

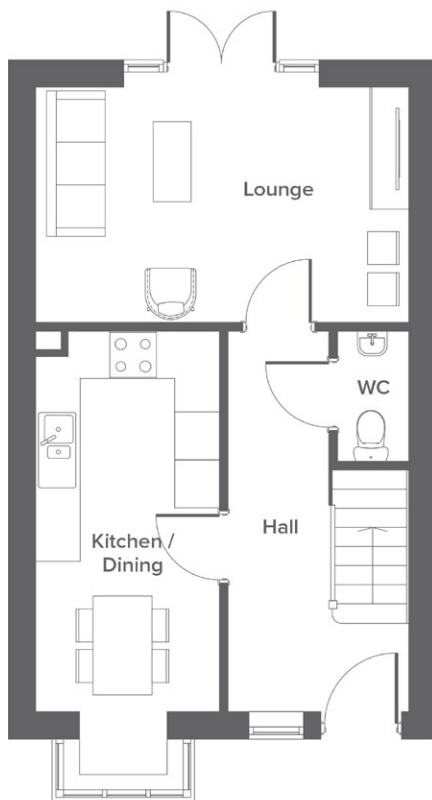
**Hargreaves Road, Northwich, CW9 7BL**

A selection of 2, 3 & 4-bedroom houses and 1-bedroom apartments

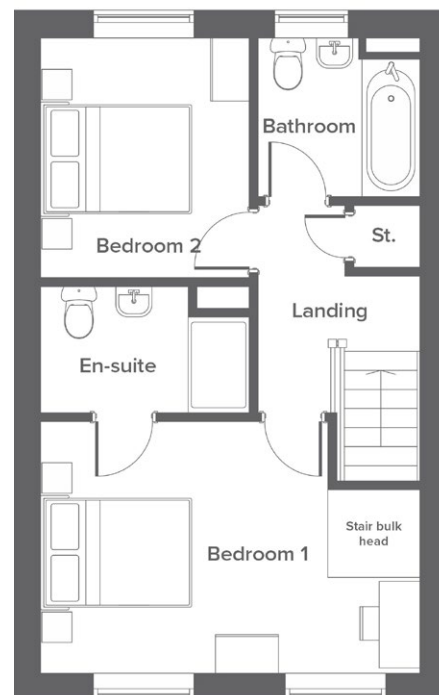
# The Poppy B Orchard View

2-bedroom home, sleeps 4

Ground floor



First floor



Room	Metric	Imperial
Kitchen/Dining	4.8 x 2.8	15'8" x 9'2"
Lounge	2.3 x 4.8	7'8" x 15'10"
W.C.	1.7 x 1.0	5'6" x 3'1"

Room	Metric	Imperial
Bedroom 1	4.8 x 3.2	15'8" x 10'4"
Bedroom 2	2.7 x 3.0	8'8" x 9'10"
Bathroom	2.1 x 2.0	6'9" x 6'7"
En-suite	2.7 x 1.6	8'8" x 5'3"

Total size **72.46 m<sup>2</sup> / 780 ft<sup>2</sup>**

## Get in touch

 01606 218072

 [yourhousinggroup.co.uk](https://yourhousinggroup.co.uk)

 @yourhousing

 yourhousinggroup