

The Poppy A Orchard View

2-bedroom home, sleeps 4

2 | 

2 | 

1 | 



Artist's impression

Key features

- Two double bedrooms
- Downstairs W.C.
- En-suite from master bedroom
- Open plan kitchen and dining room
- Separate living room

Hargreaves Road, Northwich, CW9 7BL

A selection of 2, 3 & 4-bedroom houses and 1-bedroom apartments



The Poppy A
Available plots

Rent to Buy

20, 35, 329, 376, 377

Shared Ownership

18, 19, 37, 328, 342,
343, 344, 345

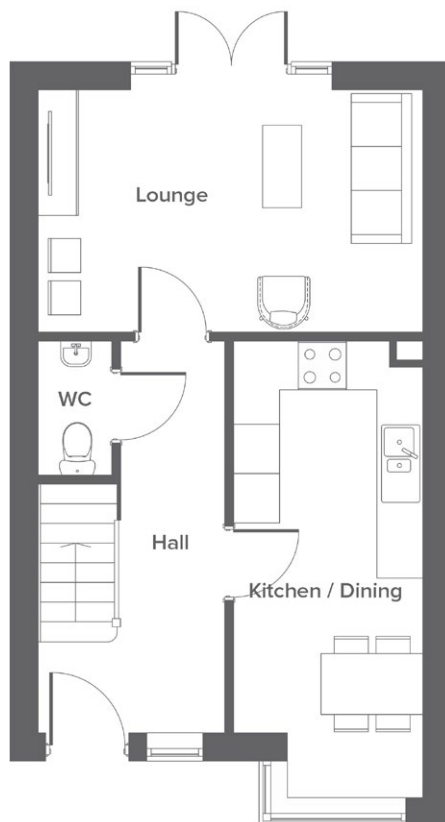
Outright Sale

21, 36

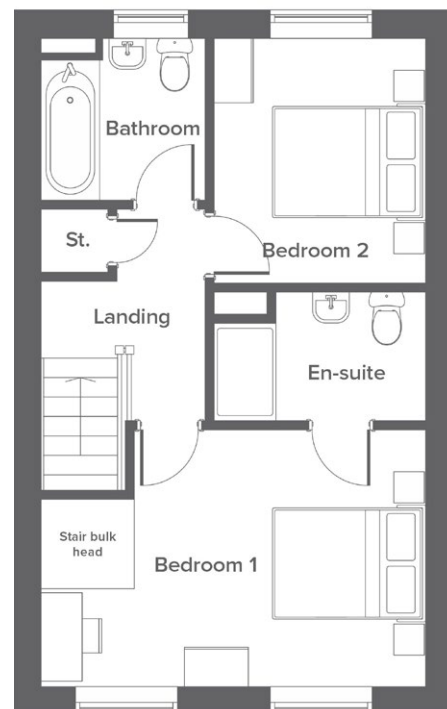
The Poppy A Orchard View

2-bedroom home, sleeps 4

Ground floor



First floor



Room	Metric	Imperial
Kitchen/Dining	4.8 x 3.0	15'8" x 9'10"
Lounge	2.3 x 4.8	7'8" x 15'10"
W.C.	1.7 x 1.0	5'6" x 3'1"

Room	Metric	Imperial
Bedroom 1	4.8 x 3.2	15'8" x 10'4"
Bedroom 2	2.7 x 3.0	8'8" x 9'10"
Bathroom	2.1 x 2.0	6'9" x 6'7"
En-suite	2.7 x 1.6	8'8" x 5'3"

Total size **79.80 m² / 859 ft²**

Get in touch

 01606 218072

 yourhousinggroup.co.uk

 @yourhousing

 yourhousinggroup