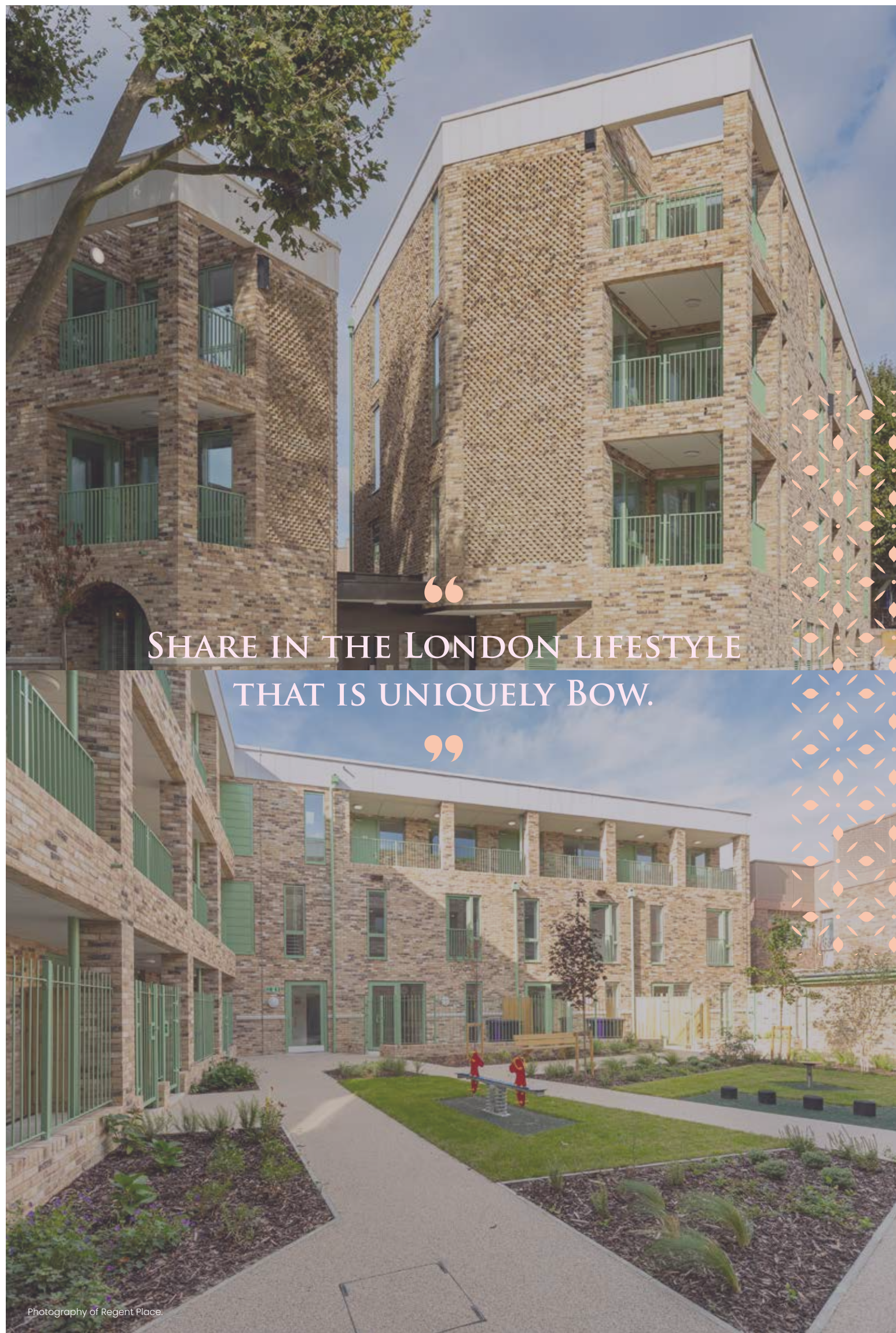




REGENT
PLACE

FLOORPLANS





Regent Place brings a range of beautifully designed brand-new one, two and three bedroom apartments as well as three bedroom duplex homes over two floors to Bow. Available to buy on a Shared Ownership basis, it means this neighbourhood in the heart of East London long known for its sense of community and distinctive identity is more accessible and affordable, so you can enjoy everything from its good schooling and café scene to quality green open space nearby. With architecture inspired by the heritage of its residential, tree-lined road, and set round landscaped courtyard including play space, each apartment is finished to Gateway's high specification and offers private outside space, and a home just minutes from local amenities and transport connections for commuting across East London and the wider capital.



Your Regent Place apartment is well planned and a pleasure to live in, with all the energy-efficiency of a new home.



Photography of Regent Place.

MOVE-IN *Ready*

– and ready for you to call home

Light-filled layouts and thoughtfully designed proportions mean that your home at Regent Place is well planned and a pleasure to live in. With all the energy-efficiency of a new home, and meeting the most up-to-date build standards from windows to heat and sound insulation, inside you will see and feel the Gateway quality of finish throughout.

This includes smart wood effect flooring in the hallways and living room as well as fitted carpet to the bedrooms. A full range of integrated appliances ensure your kitchen is equipped from day one for you to enjoy, while the contemporary styled bathrooms and tiling complete the look of your smart urban home, one you'll enjoy welcoming guests to.

DEVELOPMENT PLAN

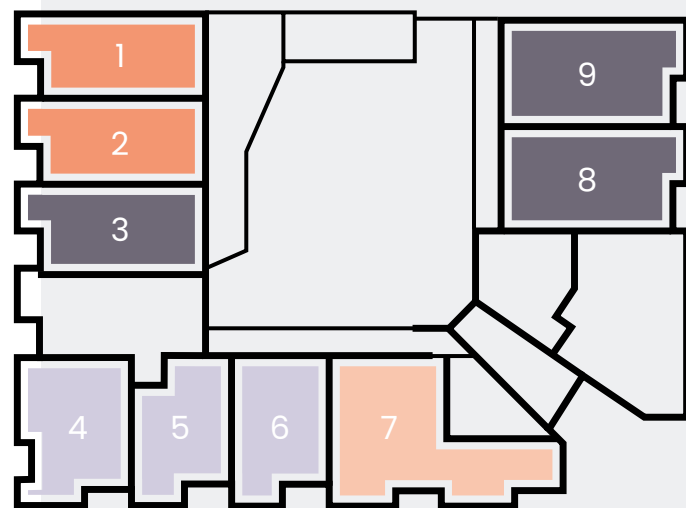


BLOCK *Plans*

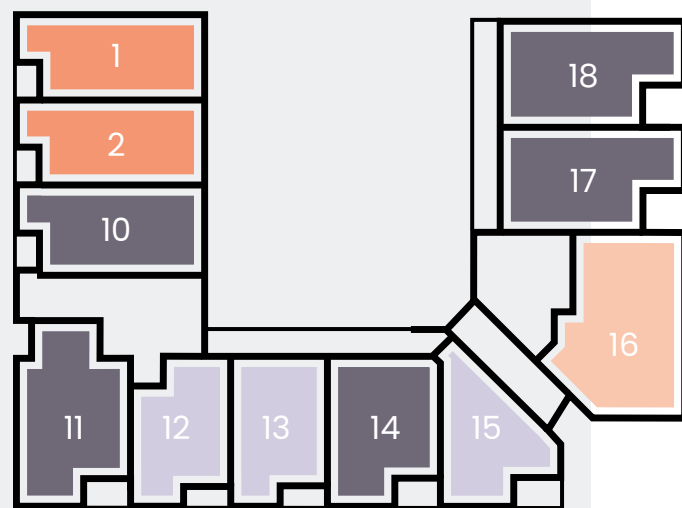
Choice comes as standard

Regent Place offers a wide selection of one, two and three bedroom apartments including 2 three-bedroom duplexes. Set over four floors, all of the apartments offer open plan kitchen/living/dining areas and many enjoy private amenity space or balconies.

Norman Grove



Ground Floor



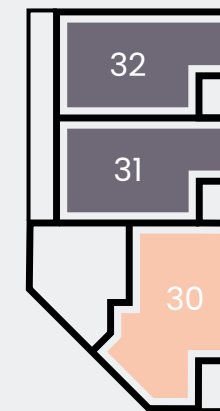
First Floor

Saxon Road

Rosebank Gardens



Second Floor



Third Floor

Key:

- 1 Bedroom
- 2 Bedroom
- 3 Bedroom
- 3 Bedroom duplex

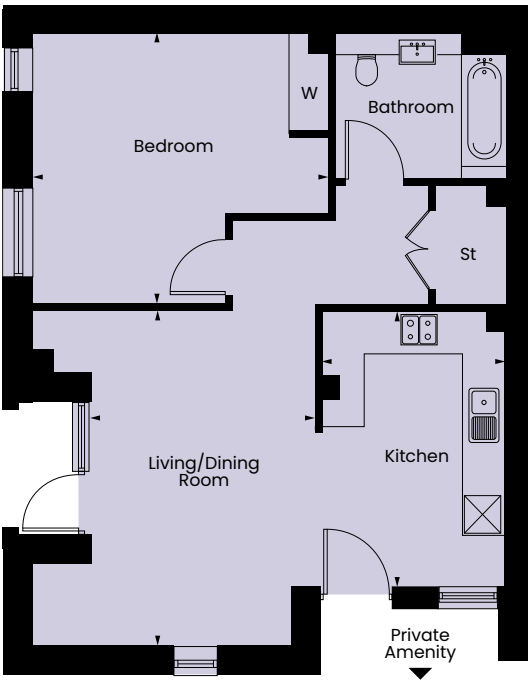
Plans are indicative only.

1 Bed

Type 1 Ground Floor Plot 4

Kitchen	4.18m x 2.82m	13'9" x 9'3"
Living/Dining Room	5.12m x 3.40m	16'10" x 11'2"
Bedroom	4.50m x 4.12m	14'9" x 13'6"
<hr/>		
Total	62.4 sq m	672 sq ft

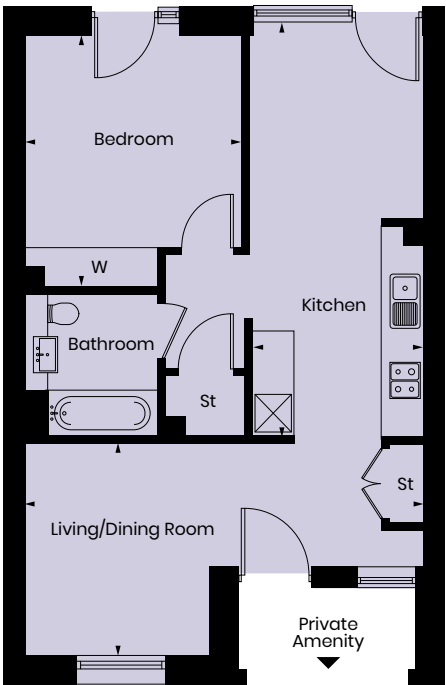
Details may vary from plot to plot. Dimensions are approximate and should not be used for furniture space, appliance space or carpet sizes. Please ask for details of your chosen plot. The contents of this document do not form or constitute a warranty or represent part of any contract. Please note: to increase legibility these plans have been sized to fit the page. As a result each plan may be a different scale to others within this document. St – store. W – wardrobe.



Type 3 Ground Floor Plot 6

Living/Dining Room	6.08m x 3.22m	19'11" x 10'7"
Kitchen	3.20m x 2.67m	10'6" x 8'9"
Bedroom	3.85m x 3.31m	12'7" x 10'10"
<hr/>		
Total	54.6 sq m	588 sq ft

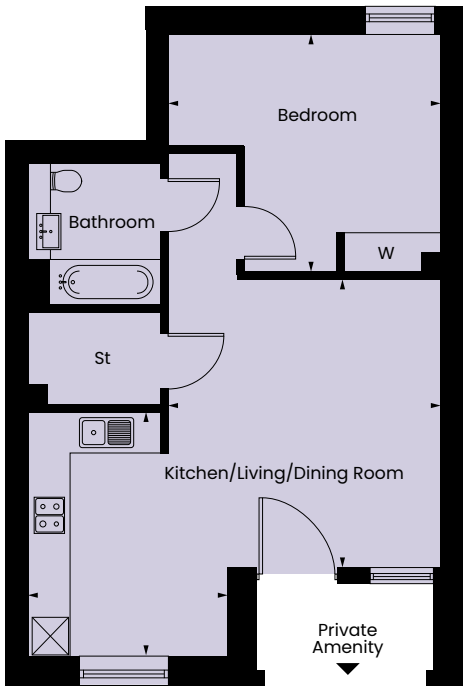
Details may vary from plot to plot. Dimensions are approximate and should not be used for furniture space, appliance space or carpet sizes. Please ask for details of your chosen plot. The contents of this document do not form or constitute a warranty or represent part of any contract. Please note: to increase legibility these plans have been sized to fit the page. As a result each plan may be a different scale to others within this document. St – store. W – wardrobe.



Type 2 Ground Floor Plot 5

Kitchen/Living/Dining Room	6.29m x 3.74m	20'8" x 12'3"
Bedroom	4.19m x 3.57m	13'9" x 11'9"
<hr/>		
Total	51.4 sq m	553 sq ft

Details may vary from plot to plot. Dimensions are approximate and should not be used for furniture space, appliance space or carpet sizes. Please ask for details of your chosen plot. The contents of this document do not form or constitute a warranty or represent part of any contract. Please note: to increase legibility these plans have been sized to fit the page. As a result each plan may be a different scale to others within this document. St – store. W – wardrobe.

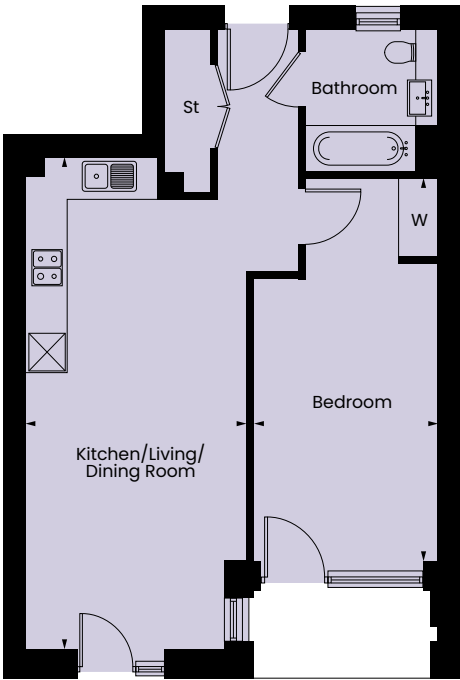


Photography of Regent Place.

Type 4
First/Second Floor Plots 12 & 23

Kitchen/Living/Dining Room	7.52m x 3.38m	24'8" x 11'1"
Bedroom	6.11m x 2.82m	20'1" x 9'3"
Total	52.4 sq m	564 sq ft

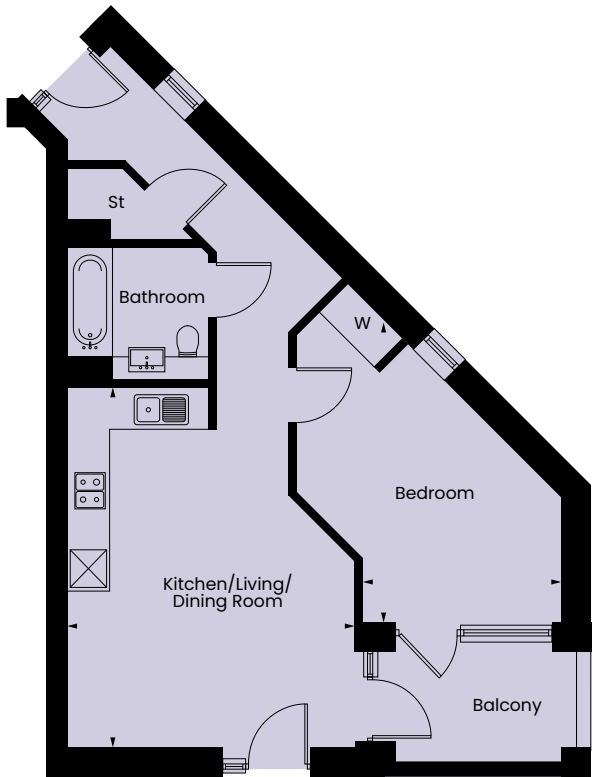
Details may vary from plot to plot. Dimensions are approximate and should not be used for furniture space, appliance space or carpet sizes. Please ask for details of your chosen plot. The contents of this document do not form or constitute a warranty or represent part of any contract. Please note: to increase legibility these plans have been sized to fit the page. As a result each plan may be a different scale to others within this document. St – store. W – wardrobe.



Type 6
First/Second Floor Plots 15 & 26

Kitchen/Living/Dining Room	5.49m x 4.38m	18'0" x 14'4"
Bedroom	4.50m x 2.43m	14'9" x 8'0"
Total	52.2 sq m	562 sq ft

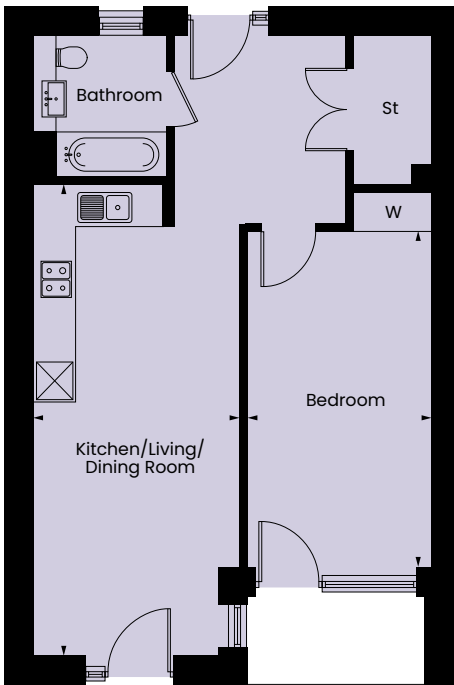
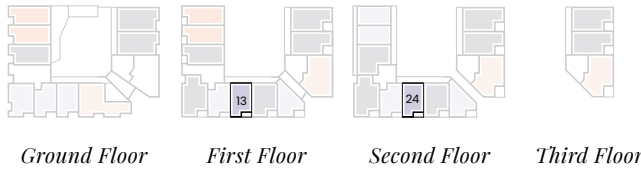
Details may vary from plot to plot. Dimensions are approximate and should not be used for furniture space, appliance space or carpet sizes. Please ask for details of your chosen plot. The contents of this document do not form or constitute a warranty or represent part of any contract. Please note: to increase legibility these plans have been sized to fit the page. As a result each plan may be a different scale to others within this document. St – store. W – wardrobe.



Type 5
First/Second Floor Plots 13 & 24

Kitchen/Living/Dining Room	7.20m x 3.16m	23'7" x 10'4"
Bedroom	5.99m x 2.83m	19'8" x 9'3"
Total	54.4 sq m	585 sq ft

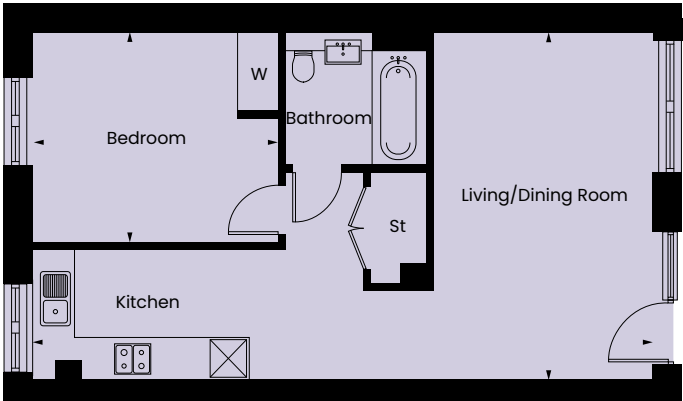
Details may vary from plot to plot. Dimensions are approximate and should not be used for furniture space, appliance space or carpet sizes. Please ask for details of your chosen plot. The contents of this document do not form or constitute a warranty or represent part of any contract. Please note: to increase legibility these plans have been sized to fit the page. As a result each plan may be a different scale to others within this document. St – store. W – wardrobe.



Type 7
Second Floor Plots 19 & 20

Kitchen/Living/Dining Room	9.44m x 5.30m	31'0" x 17'5"
Bedroom	3.74m x 3.21m	12'3" x 10'6"
Total	50.3 sq m	541 sq ft

Details may vary from plot to plot. Dimensions are approximate and should not be used for furniture space, appliance space or carpet sizes. Please ask for details of your chosen plot. The contents of this document do not form or constitute a warranty or represent part of any contract. Please note: to increase legibility these plans have been sized to fit the page. As a result each plan may be a different scale to others within this document. St – store. W – wardrobe.

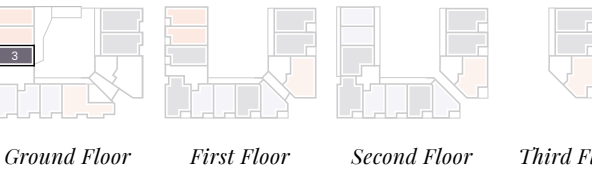
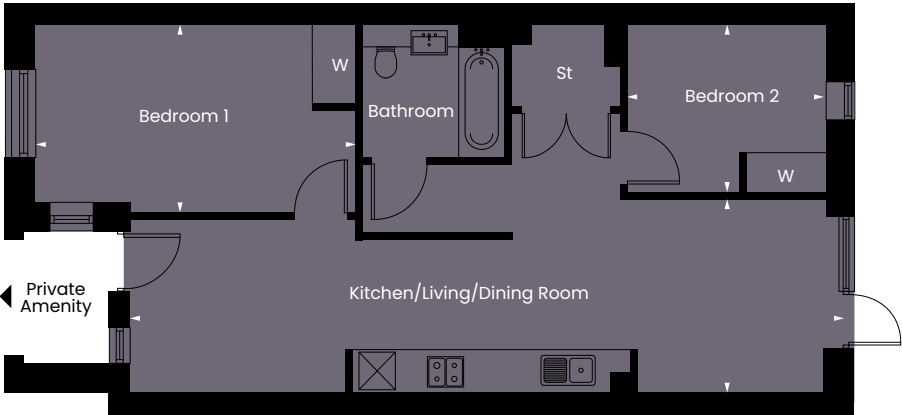


2 Bed

Type 8
Ground Floor Plot 3

Kitchen/Living/Dining Room	10.82m x 2.94m	35'6" x 9'8"
Bedroom 1	4.84m x 2.87m	15'11" x 9'5"
Bedroom 2	3.03m x 2.60m	9'11" x 8'6"
<hr/>		
Total	64.6 sq m	695 sq ft

Details may vary from plot to plot. Dimensions are approximate and should not be used for furniture space, appliance space or carpet sizes. Please ask for details of your chosen plot. The contents of this document do not form or constitute a warranty or represent part of any contract. Please note: to increase legibility these plans have been sized to fit the page. As a result each plan may be a different scale to others within this document.
St – store. W – wardrobe.



Type 10
First Floor Plot 10

Kitchen/Living/Dining Room	5.27m x 5.63m	17'3" x 18'6"
Bedroom 1	5.17m x 4.39m	17'0" x 14'5"
Bedroom 2	4.41m x 3.27m	14'6" x 10'9"
<hr/>		
Total	84.4 sq m	908 sq ft

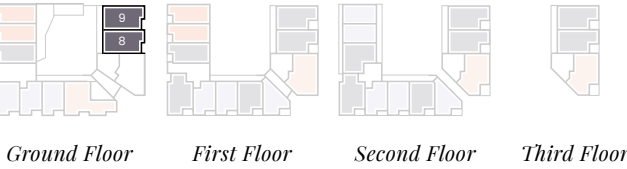
Details may vary from plot to plot. Dimensions are approximate and should not be used for furniture space, appliance space or carpet sizes. Please ask for details of your chosen plot. The contents of this document do not form or constitute a warranty or represent part of any contract. Please note: to increase legibility these plans have been sized to fit the page. As a result each plan may be a different scale to others within this document.
St – store. W – wardrobe.



Type 9
Ground Floor Plots 8 & 9

Kitchen/Living/Dining Room	11.04m x 3.14m	36'3" x 10'4"
Bedroom 1	4.12m x 3.34m	13'6" x 10'11"
Bedroom 2	3.68m x 3.23m	12'1" x 10'7"
<hr/>		
Total	76.6 sq m	824 sq ft

Details may vary from plot to plot. Dimensions are approximate and should not be used for furniture space, appliance space or carpet sizes. Please ask for details of your chosen plot. The contents of this document do not form or constitute a warranty or represent part of any contract. Please note: to increase legibility these plans have been sized to fit the page. As a result each plan may be a different scale to others within this document.
St – store. W – wardrobe.



Type 11
First/Second Floor Plots 11 & 22

Kitchen/Living/Dining Room	7.22m x 4.47m	23'8" x 14'8"
Bedroom 1	4.81m x 3.84m	15'9" x 12'7"
Bedroom 2	4.18m x 2.92m	13'9" x 9'7"
<hr/>		
Total	73.9 sq m	795 sq ft

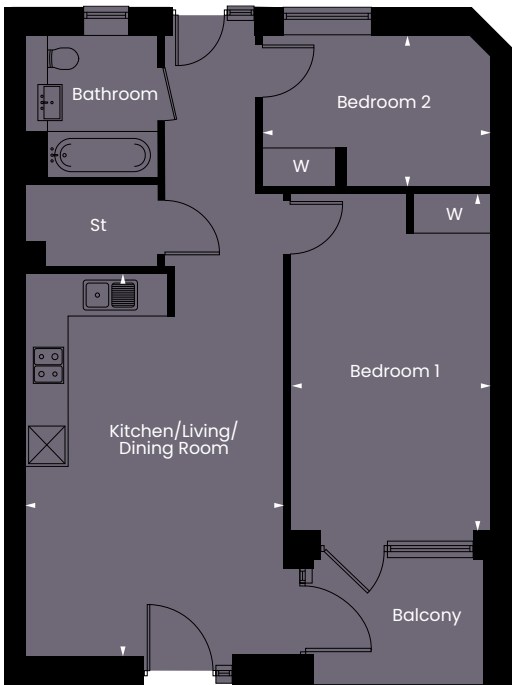
Details may vary from plot to plot. Dimensions are approximate and should not be used for furniture space, appliance space or carpet sizes. Please ask for details of your chosen plot. The contents of this document do not form or constitute a warranty or represent part of any contract. Please note: to increase legibility these plans have been sized to fit the page. As a result each plan may be a different scale to others within this document.
St – store. W – wardrobe.



Type 12
First/Second Floor Plots 14 & 25

Kitchen/Living/Dining Room	5.84m x 3.93m	19'2" x 12'11"
Bedroom 1	5.84m x 3.94m	19'2" x 12'11"
Bedroom 2	3.50m x 2.30m	11'6" x 7'7"
<hr/>		
Total	62.6 sq m	674 sq ft

Details may vary from plot to plot. Dimensions are approximate and should not be used for furniture space, appliance space or carpet sizes. Please ask for details of your chosen plot. The contents of this document do not form or constitute a warranty or represent part of any contract. Please note: to increase legibility these plans have been sized to fit the page. As a result each plan may be a different scale to others within this document. St – store. W – wardrobe.



Type 14
Second Floor Plot 21

Kitchen/Living/Dining Room	9.45m x 2.68m	31'0" x 8'10"
Bedroom 1	3.55m x 3.31m	11'8" x 10'10"
Bedroom 2	3.55m x 2.35m	11'8" x 7'9"
<hr/>		
Total	70.3 sq m	757 sq ft

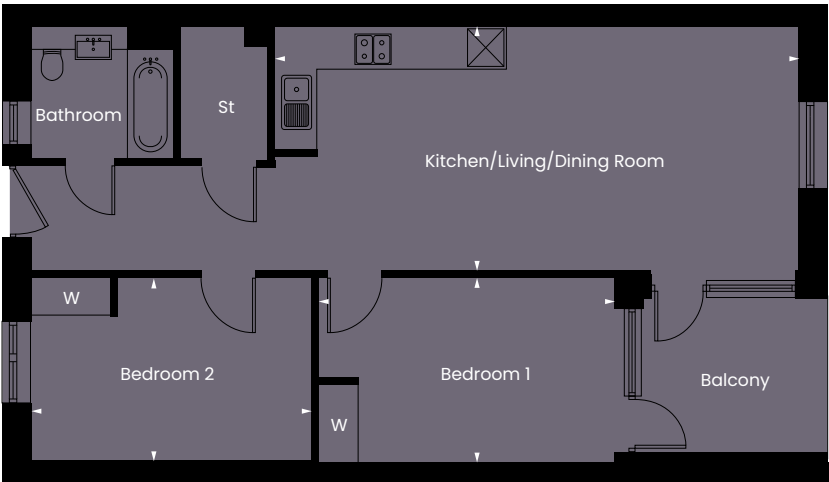
Details may vary from plot to plot. Dimensions are approximate and should not be used for furniture space, appliance space or carpet sizes. Please ask for details of your chosen plot. The contents of this document do not form or constitute a warranty or represent part of any contract. Please note: to increase legibility these plans have been sized to fit the page. As a result each plan may be a different scale to others within this document. St – store. W – wardrobe.



Type 13
First/Second/Third Floor
Plots 17, 18, 28, 29, 31 & 32

Kitchen/Living/Dining Room	8.01m x 3.73m	26'3" x 12'3"
Bedroom 1	4.50m x 2.82m	14'9" x 9'3"
Bedroom 2	4.27m x 2.82m	14'0" x 9'3"
<hr/>		
Total	70.8 sq m	762 sq ft

Details may vary from plot to plot. Dimensions are approximate and should not be used for furniture space, appliance space or carpet sizes. Please ask for details of your chosen plot. The contents of this document do not form or constitute a warranty or represent part of any contract. Please note: to increase legibility these plans have been sized to fit the page. As a result each plan may be a different scale to others within this document. St – store. W – wardrobe.



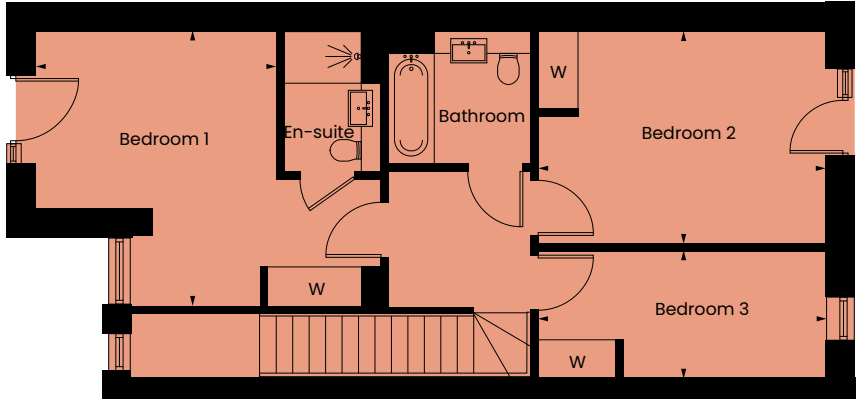
Photography of Regent Place.

3 Bed Duplex

Type 15 Ground/First Floor Plots 1 & 2

Kitchen/Living/Dining Room	12.03m x 5.26m	39'6" x 17'3"
Bedroom 1	4.20m x 3.66m	13'9" x 12'0"
Bedroom 2	4.37m x 3.25m	14'4" x 10'8"
Bedroom 3	4.35m x 1.94m	14'3" x 6'4"
<hr/>		
Total	122 sq m	1313 sq ft

Details may vary from plot to plot. Dimensions are approximate and should not be used for furniture space, appliance space or carpet sizes. Please ask for details of your chosen plot. The contents of this document do not form or constitute a warranty or represent part of any contract. Please note: to increase legibility these plans have been sized to fit the page. As a result each plan may be a different scale to others within this document. St – store. W – wardrobe.



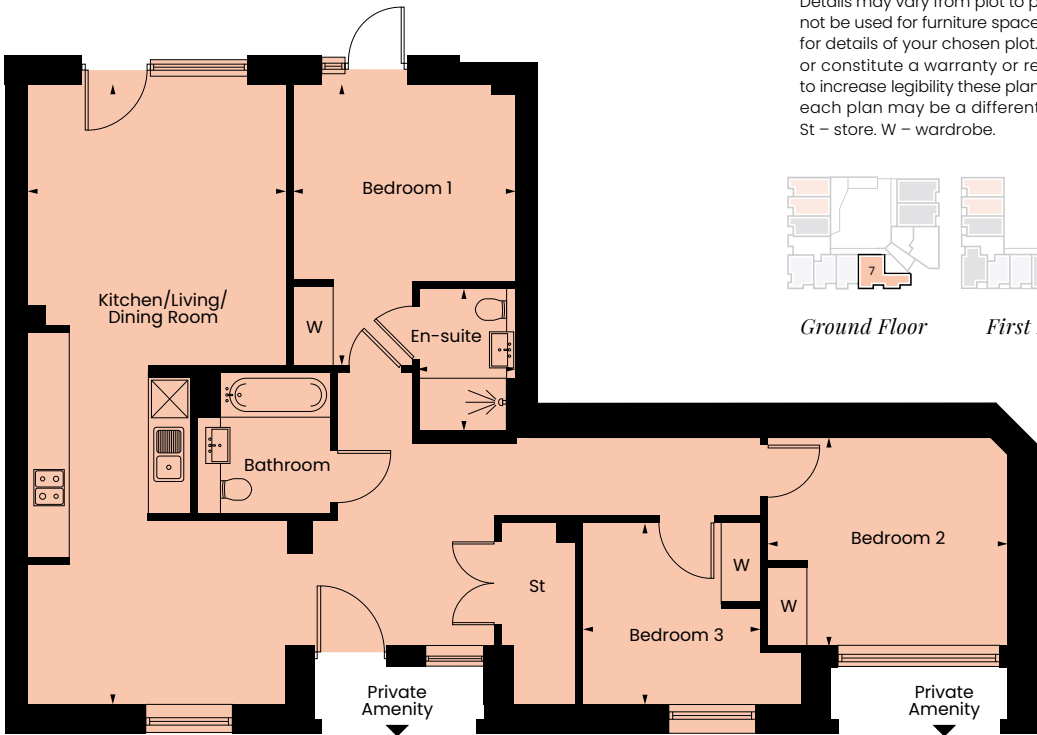
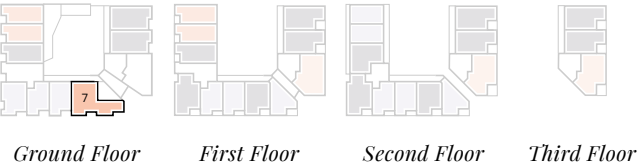
3 Bed

Type 16 Ground Floor Plot 7

Kitchen/Living/Dining Room	9.42m x 3.96m	30'11" x 13'0"
Bedroom 1	4.26m x 3.43m	14'0" x 11'3"
Bedroom 2	3.65m x 3.18m	12'0" x 10'5"
Bedroom 3	2.78m x 2.72m	9'1" x 8'11"

Total	97.3 sq m	1047 sq ft
--------------	------------------	-------------------

Details may vary from plot to plot. Dimensions are approximate and should not be used for furniture space, appliance space or carpet sizes. Please ask for details of your chosen plot. The contents of this document do not form or constitute a warranty or represent part of any contract. Please note: to increase legibility these plans have been sized to fit the page. As a result each plan may be a different scale to others within this document. St – store. W – wardrobe.

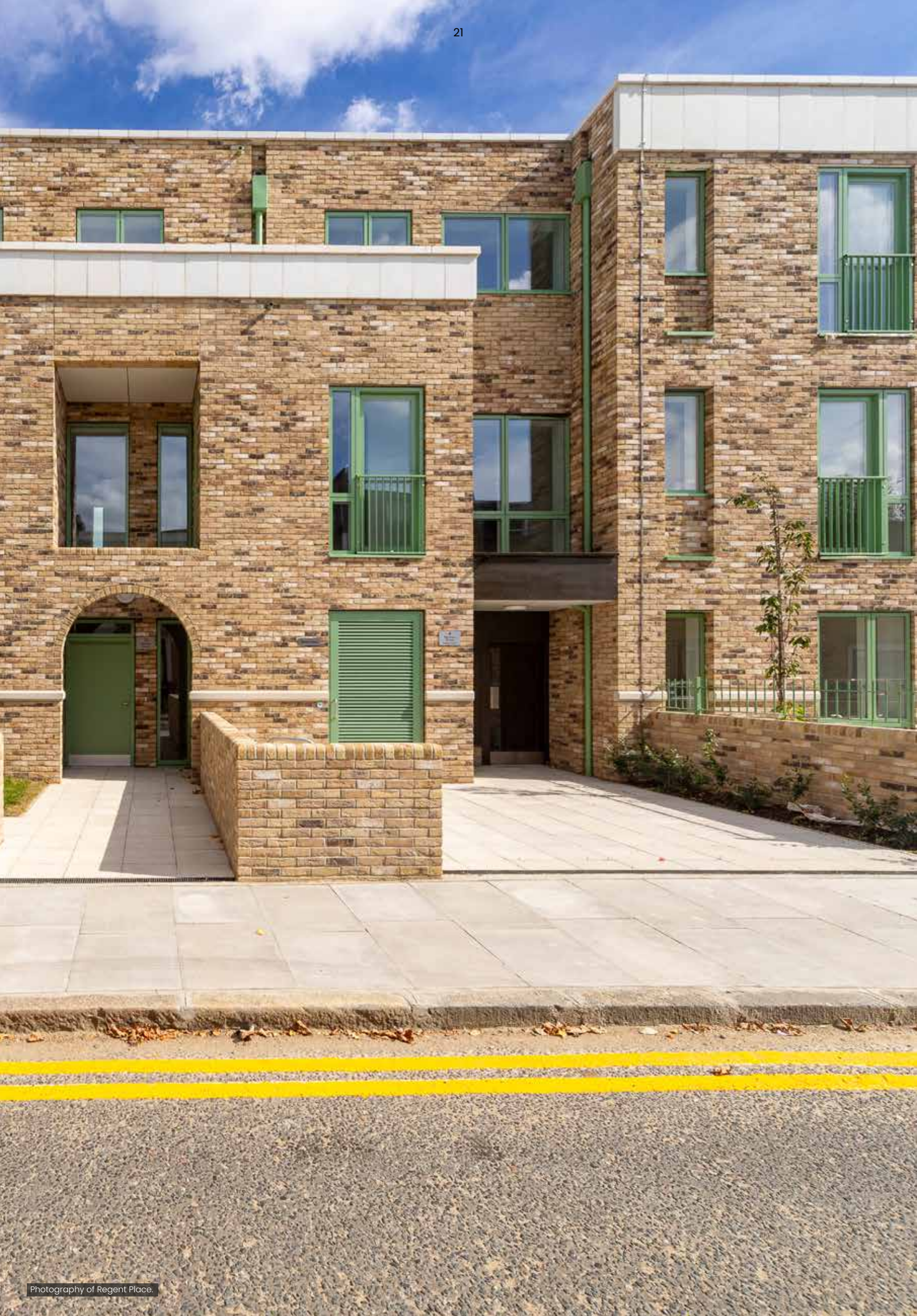
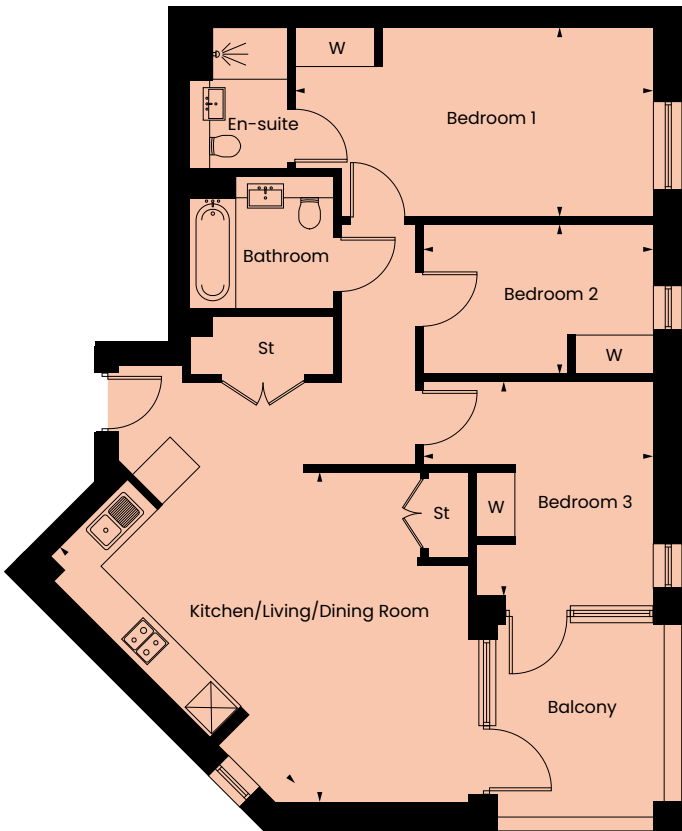


Type 17 First/Second/Third Floor Plots 16, 27 & 30

Kitchen/Living/Dining Room	5.05m x 5.05m	16'7" x 16'7"
Bedroom 1	5.45m x 2.88m	17'11" x 9'5"
Bedroom 2	3.51m x 2.31m	11'6" x 7'7"
Bedroom 3	3.52m x 3.51m	11'7" x 11'6"

Total	81.9 sq m	881 sq ft
--------------	------------------	------------------

Details may vary from plot to plot. Dimensions are approximate and should not be used for furniture space, appliance space or carpet sizes. Please ask for details of your chosen plot. The contents of this document do not form or constitute a warranty or represent part of any contract. Please note: to increase legibility these plans have been sized to fit the page. As a result each plan may be a different scale to others within this document. St – store. W – wardrobe.



Photography of Regent Place.



*Map for indicative purposes only.

YOUR NEW *Neighbourhood*

City living is at its most rewarding when you feel part of a local neighbourhood, and at Regent Place you are right at the heart of one of London's most distinctive, dynamic and diverting.

It should be no surprise that this strong sense of community is one that can be seen and felt all around, because it is in East London's DNA. Now, modern day Bow adds new places and spaces that bring people together, seamlessly blending them all into the eclectic mix that is Bow. This is a community that loves to support its many local independent businesses. Each adds their own individual character - and all are passionate about the place as well as about what they do, from friendly family-run shop owners to café proprietors welcoming you for a traditional pie and mash or panini and cappuccino. Locals are just as proud too of the talents and skills of Bow's Urban Makers, founded in Bow, and playing their part in helping the local economy thrive. You'll also find people throughout the community who love to share their love for dance, sports or the arts, so whether you are a youngster, young professional or parent, this is a place where everyone at every age and life-stage can embrace life in Bow, a place where your new neighbourhood will very soon feel like home.

SPECIFICATION

Kitchen

- Omega chic light grey kitchen units, handleless Silestone Stella blanco quartz worktop (1 and 2 beds)
- Omega Chic dusk grey kitchen units, handleless Silestone Marengo worktop (3 beds)
- Zanussi integrated oven
- Zanussi integrated microwave
- Blanco Supra 500-U undermount sink
- Pure White Glass splashback
- Spot light task lighting to unit underside
- Zanussi integrated cooker hood

Bathrooms & En-suites

- Ideal standard semi recessed basin with Hansgrohe mixer tap
- Egger vanity top and vanity under basin box in Dark Mountain Oak
- KALDEWEI Eurowa bath (where applicable)
- Hansgrohe bath mixer tap (where applicable)
- Hansgrohe Croma shower kit and Merlyn hinged shower screen (where applicable)
- Hansgrohe mixer shower control
- Draks vanity in 'Egger Anthracite Finline Metallic'
- Draks vanity top in 'Egger White Levanto Marble' with under basin box
- Chrome plated steel toilet roll holder
- CTD Gemini Earth Grey Anti-slip ceramic wall and floor tiles
- Heated towel rail

Heating, electrical & Lighting

- White finish sockets and switches
- BT master point in each unit
- Multimedia including TV point in each unit
- Light to balconies/terraces (where applicable)
- Video door entry (where applicable)
- Bespoke feature lighting in communal entrance lobbies and duplex units

Interior Finishes

- Lifestyle Floors Chelsea Boutique Oak to kitchen, living room and hallway
- Kingsmead carpet pennine twist cloud to bedrooms (and stairs where applicable)
- Ceilings and joinery finished in Dulux white paint
- Walls in Dulux eggshell paint
- Stainless steel door hardware





GATEWAY *Housing*

has been supporting
communities to thrive
Since 1926

Gateway Housing Association is an ambitious housing association with 3,000 homes in the heart of London's East End.

We operate mostly in the London Borough of Tower Hamlets but we have some properties in Hackney and Newham. These are made up of social rented homes, shared ownership homes, private homes and sheltered housing.

Developing new homes is also a priority for us, and our exciting programme is on course to deliver 500 new homes by the end of 2021.

Our focus is on 'supporting communities to thrive'. That's why we invest so much in community projects for our resident groups and young people each year, making us so much more than a landlord.

Tel: 020 8709 4300
Email: enquiries@gatewayhousing.org.uk

Gateway Housing Association
409-413 Mile End Road, London E3 4PB

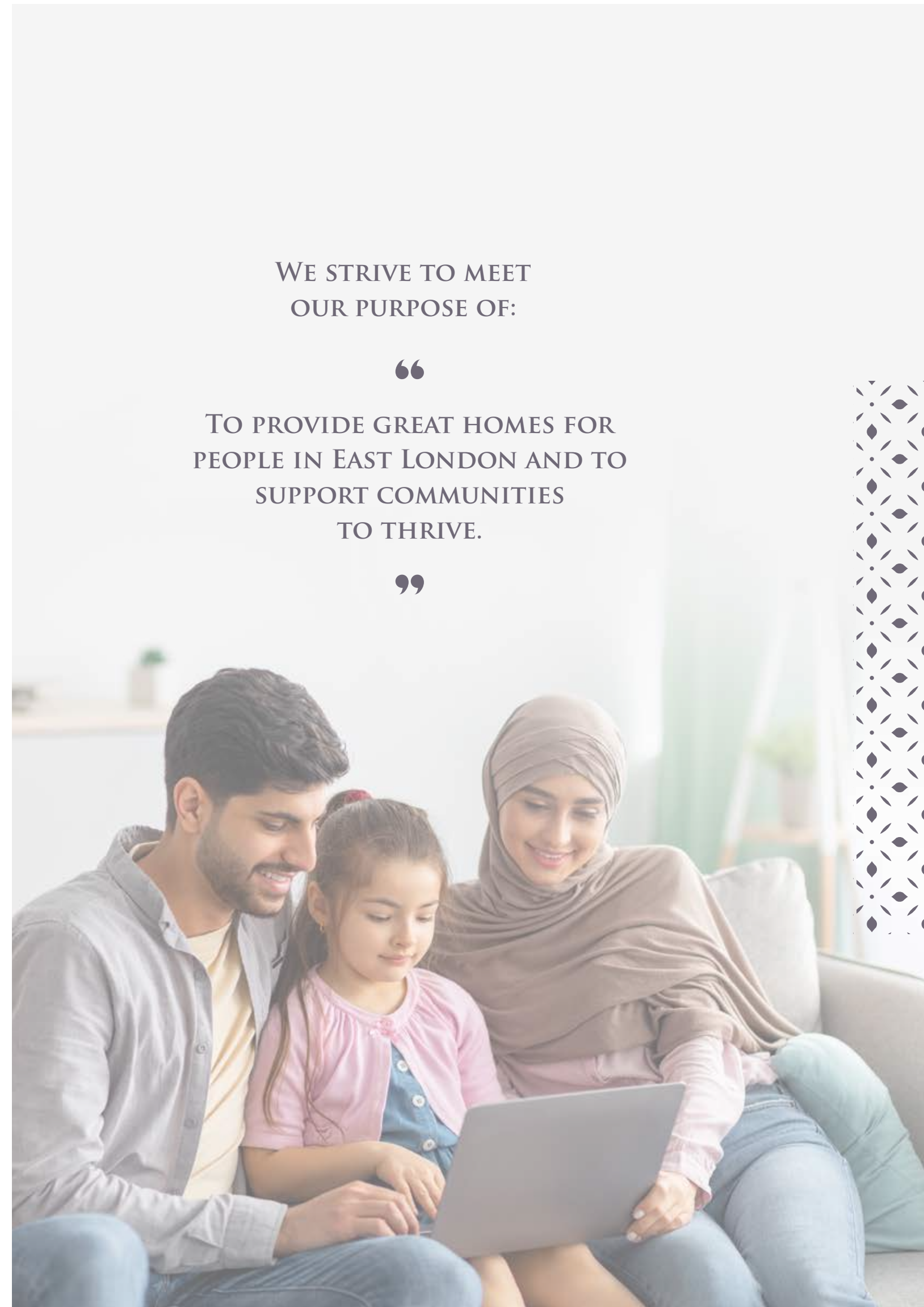
newhomes.gatewayhousing.org.uk

WE STRIVE TO MEET
OUR PURPOSE OF:

“

TO PROVIDE GREAT HOMES FOR
PEOPLE IN EAST LONDON AND TO
SUPPORT COMMUNITIES
TO THRIVE.

”





newhomes.gatewayhousing.org.uk

Registered as a society under the Co-operative and Community Benefit Societies Act 2014 No.10433R
and the Regulator for Social Housing No. L0517. A member of the National Housing Federation.