



The Ramsden

Gateway House
Runwell Road, Wickford, SS11 7HG

2 Bedroom Apartment



Sanctuary

The Ramsden



#mysanctuaryhome

The Ramsden is a contemporary 2 bedroom apartment located on the ground floor of Gateway House.

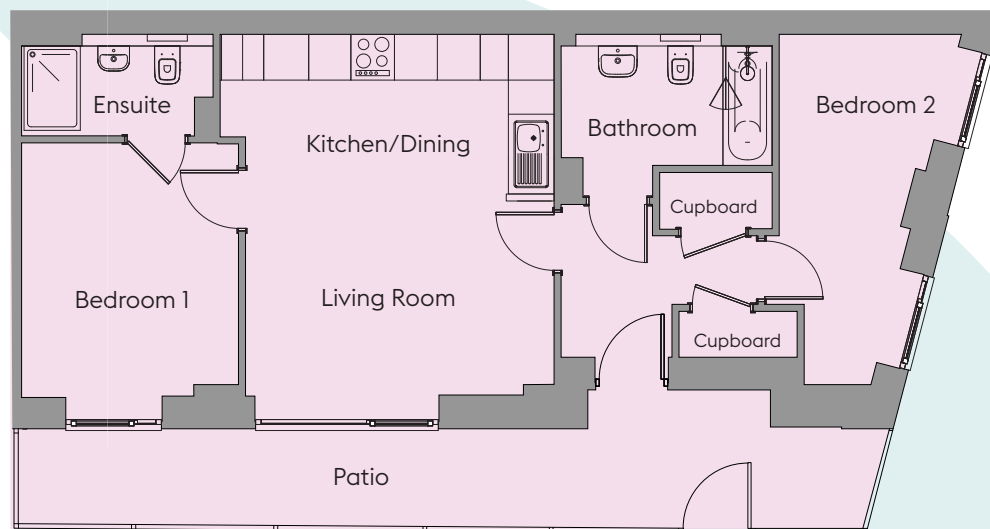
From the entrance hall, you have a spacious open-plan kitchen/living/dining area to the left of the apartment, which when continuing through leads you to the master bedroom complete with an ensuite bathroom. To the right, there is an additional bedroom that could be used as a spare room, home office or hobby room. The apartment also includes a family bathroom and convenient storage cupboard in the hallway.

Plot 68

2 Bedroom Apartment

	Width (m) x Length (m)	Width (feet and inches) x Length (feet and inches)
Kitchen/Dining	2.28 x 4.74	7'6" x 15'7"
Living Room	2.81 x 4.39	9'3" x 14'5"
Bedroom 1	3.09 x 3.62	10'1" x 11'10"
Ensuite	1.50 x 2.73	4'11" x 8'11"
Bedroom 2	2.64 x 5.02	8'8" x 16'6"
Bathroom	1.90 x 2.91	6'3" x 9'6"

Total Area: 62.9sqm / 677sqft



07960 951 206

www.sanctuary-homes.co.uk

Gateway.House@sanctuary.co.uk

This is an English version. If you require this document in another format or language, please email newhomes@sanctuary.co.uk with the details of your request. Images are purely for illustrative purposes and are not representative of specification.

Sizes are based on maximum measurements and are for indication only. Any intending purchaser should satisfy themselves by inspection or otherwise as to their accuracy. Floorplans have been increased in size for legibility and are not to scale to all other plans within this brochure. Also some plots may be handed. Please consult the sales team for more information.

Sanctuary