



# CABLE WHARF

by

**love**livinghomes

**Maisonettes  
and Flats over Garages**

Northfleet, Gravesend DA11 9AA





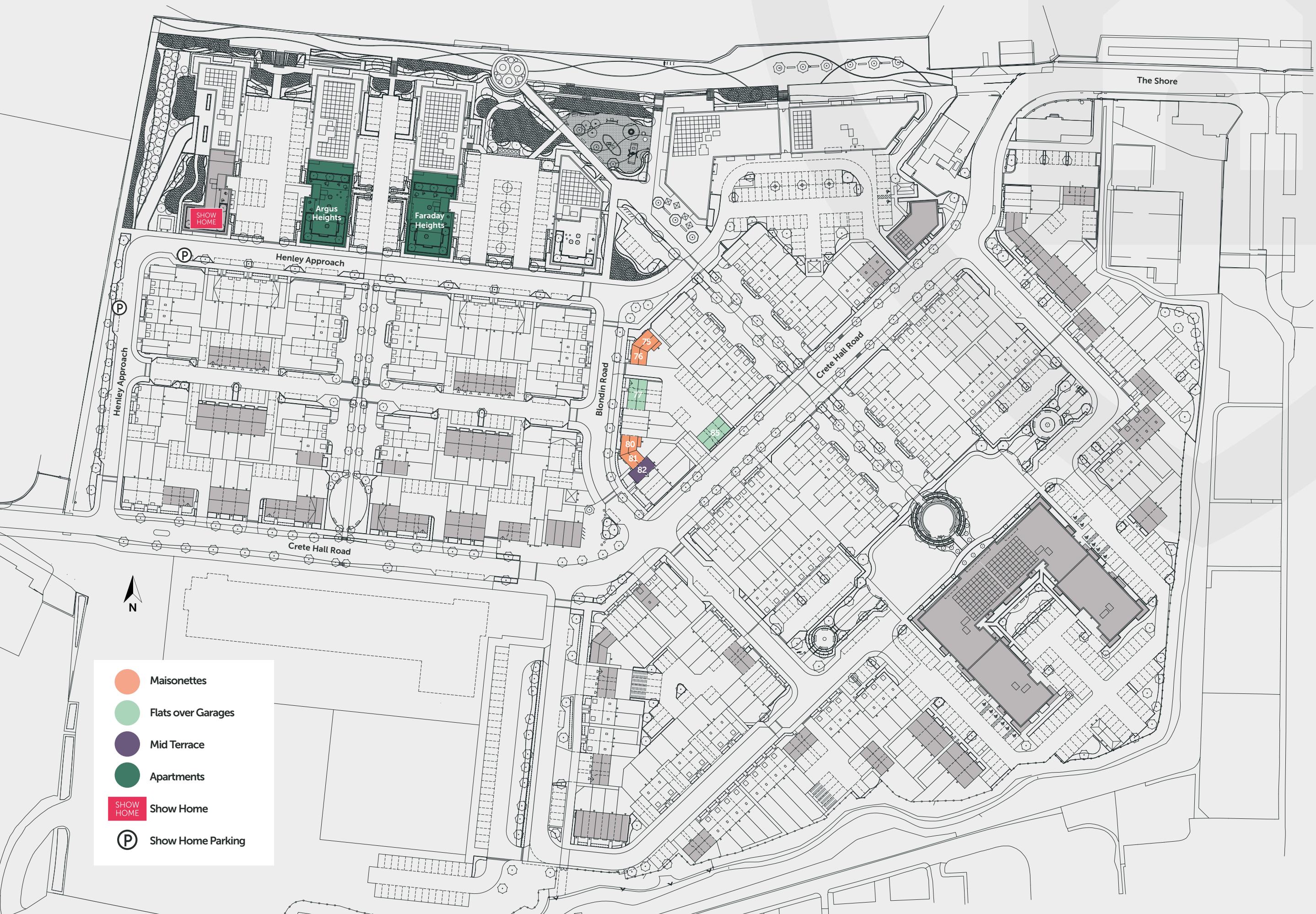
Artistic impression. Elevation treatments are subject to change.

A highly sought-after key commuter location.  
Enjoy fast access into London St Pancras in 23 minutes.





# Cable Wharf site plan



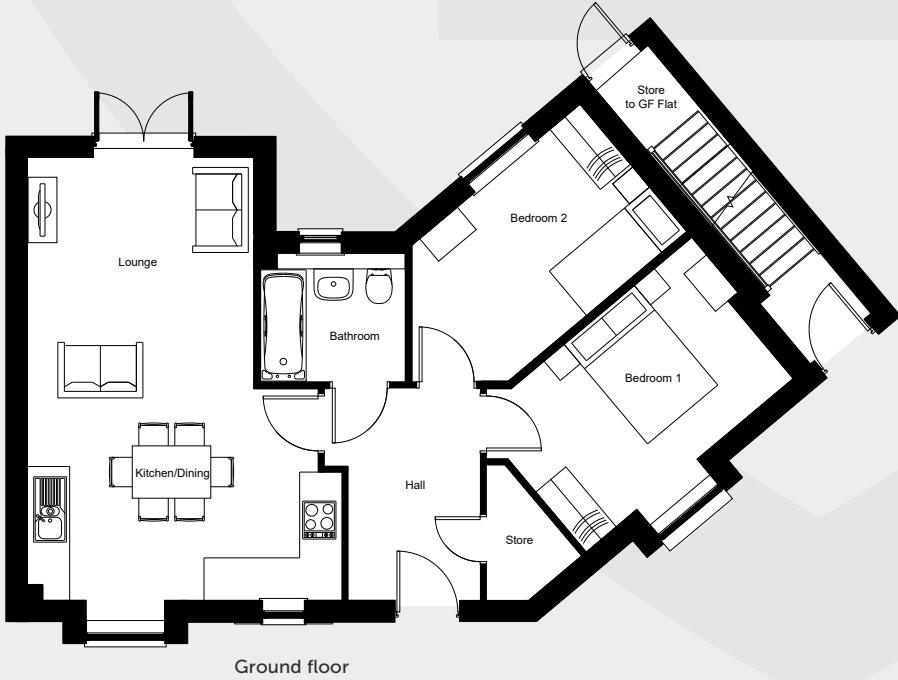




# Clove

Maisonette

- 65.1 sqm / 700 sqft
- 2 Bedroom
- 1 Bathroom



DIMENSIONS

**LOUNGE / DINING / KITCHEN**  
6770mm x 4815mm - 22'2" x 15'9"

**BEDROOM 1**  
4329mm x 2650mm - 14'2" x 8'8"




**BEDROOM 2**  
4698mm x 2539mm - 15'5" x 8'4"

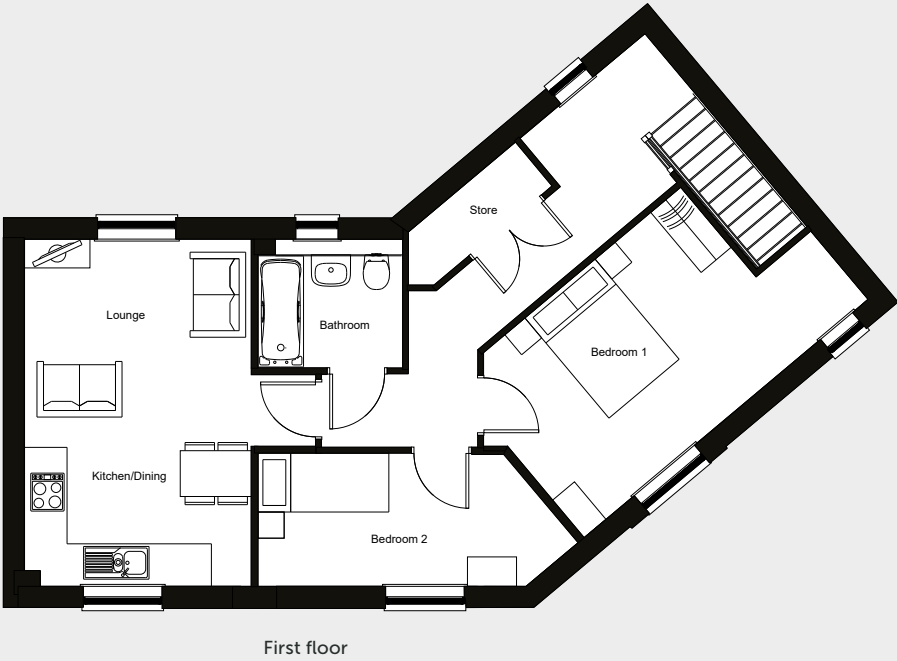
PLOT

75

# Reef

Maisonette

-   
67.1 sqm / 722 sqft
-   
2 Bedroom
-   
1 Bathroom



DIMENSIONS

**LOUNGE / DINING / KITCHEN**  
5307mm x 3465mm - 17'5" x 11'4"

**BEDROOM 1**  
5683mm x 3157mm - 18'8" x 10'4"

**BEDROOM 2**  
4891mm x 2021mm - 16' x 6'7"




PLOT

76

Please note that all dimensions shown are for guidance only and maximum measurements are shown where necessary. Plans should not be used for furniture or other fittings. Furniture shown is for illustrative purposes only and not included. Individual units may vary according to location – please consult your sales advisor for more details

# Carrick

Maisonette

-   
62.1 sqm / 668 sqft
-   
2 Bedroom
-   
1 Bathroom



DIMENSIONS

**LOUNGE / DINING / KITCHEN**  
6770mm x 4815mm - 22'2" x 15'9"

**BEDROOM 1**  
4329mm x 2650mm - 14'2" x 8'8"

**BEDROOM 2**  
3072mm x 2539mm - 10'1" x 8'4"




PLOT

80

Please note that all dimensions shown are for guidance only and maximum measurements are shown where necessary. Plans should not be used for furniture or other fittings. Furniture shown is for illustrative purposes only and not included. Individual units may vary according to location – please consult your sales advisor for more details

# Bowline

Maisonette

-   
63.9 sqm / 688 sqft
-   
2 Bedroom
-   
1 Bathroom



DIMENSIONS

**LOUNGE / DINING / KITCHEN**  
5307mm x 3465mm - 17'5" x 11'4"

**BEDROOM 1**  
5679mm x 3144mm - 18'7" x 10'4"

**BEDROOM 2**  
4776mm x 2021mm - 15'8" x 6'7"




PLOT

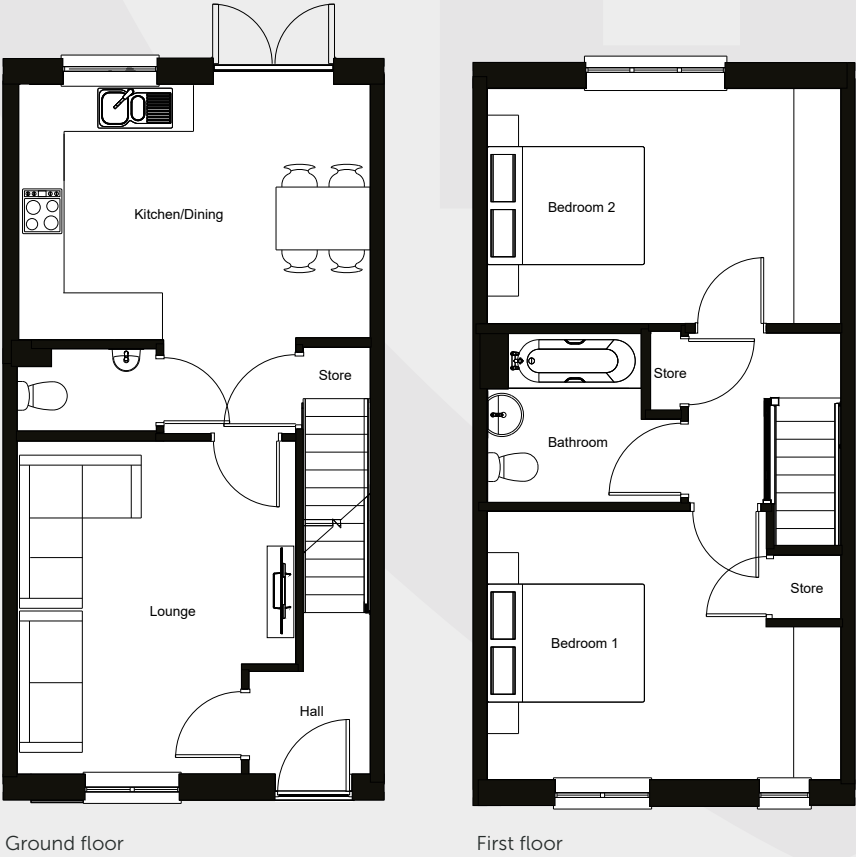
81

Please note that all dimensions shown are for guidance only and maximum measurements are shown where necessary. Plans should not be used for furniture or other fittings. Furniture shown is for illustrative purposes only and not included. Individual units may vary according to location – please consult your sales advisor for more details

# Cleat

Mid-terrace House

-   
79.2 sqm / 852 sqft
-   
2 Bedroom
-   
1 Bathroom



DIMENSIONS

**LOUNGE**  
4297mm x 2899mm - 14'1" x 9'6"

**KITCHEN / DINING**  
4549mm x 4458mm - 14'11" x 14'8"

**BATHROOM**  
4549mm x 3453mm - 14'11" x 11'4"

**BEDROOM 1**  
4549mm x 3041mm - 14'11" x 10'0"




PLOT

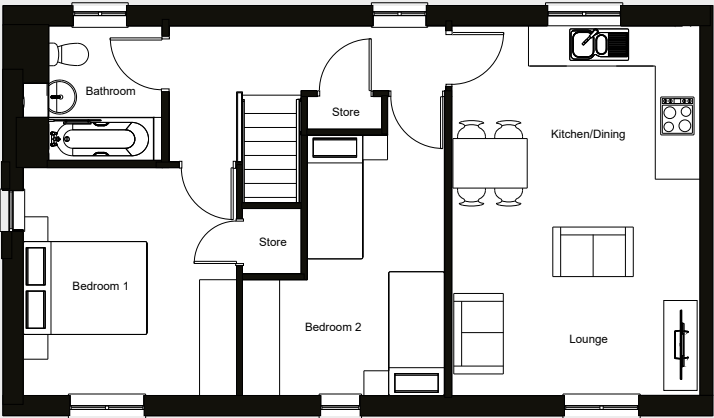
82

Please note that all dimensions shown are for guidance only and maximum measurements are shown where necessary. Plans should not be used for furniture or other fittings. Furniture shown is for illustrative purposes only and not included. Individual units may vary according to location – please consult your sales advisor for more details

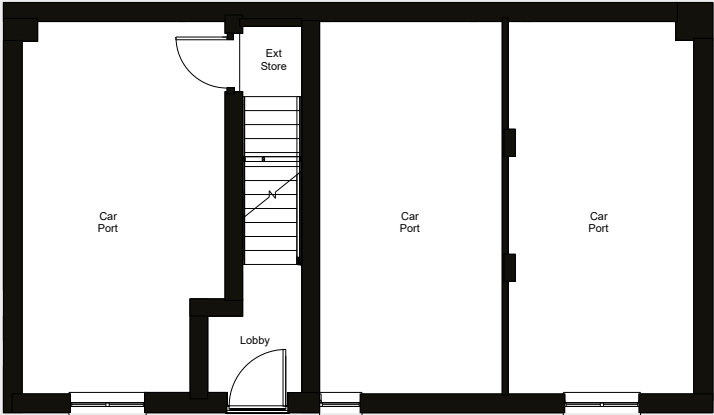
# Butterfly

Flat over Garage

-   
71.2 sqm / 766 sqft
-   
2 Bedroom
-   
1 Bathroom



First floor



Ground floor



Computer generated image

DIMENSIONS

**LOUNGE / DINING / KITCHEN**  
6023mm x 3941mm - 19'9" x 12'11"

**BEDROOM 1**  
3722mm x 3490mm - 12'2" x 11'5"  
**BEDROOM 2**  
4248mm x 3292mm - 13'11" x 10'9"

PLOT

77  
85

Please note that all dimensions shown are for guidance only and maximum measurements are shown where necessary. Plans should not be used for furniture or other fittings. Furniture shown is for illustrative purposes only and not included. Individual units may vary according to location – please consult your sales advisor for more details



# Specification

All our homes at Cable Wharf include generous specifications to make life as comfortable and convenient as can be.

## KITCHEN

- Contemporary Symphony grey kitchen units with pearl grey granite effect worktops
- Integrated washing machine and dishwasher
- Gas hobs and boilers
- Stainless steel splash back & canopy extractor fan
- Stainless steel sink and drainer

## BATHROOM

- Contemporary white bathroom suite with chrome fittings
- Porcelanosa Park gris tiles
- Shower over bath with glass screen
- Pedestal washbasin with mixer tap
- Chrome heated towel radiator

## INTERIOR & DECORATION

- Textured, light wood effect vinyl floorings to kitchen, living space & hallways
- Almond white emulsion to walls and ceilings and white satin to woodwork
- Durable grey carpets to all bedrooms
- Automatic room thermostat control
- TV / broadband connection point
- Storage solutions

## EXTERIOR

- Allocated parking
- Riverfront development

## WARRANTY

- All Love Living Homes are backed by a full 10-year NHBC warranty to provide peace of mind, and help you relax knowing that there's help if you need it!



## Reserving your chosen plot

There's nothing more exciting than taking that first step onto the home ownership ladder. With generous specifications, make life comfortable and convenient in the beautiful Gravesham area. Love your new home at Cable Wharf with Love Living Homes.

Viewings to the show home are by appointment only. To book yours or find out more information, please contact us:

 [buy@lovelivinghomes.co.uk](mailto:buy@lovelivinghomes.co.uk)  
07340 361424



Monson House, Monson Way,  
Tunbridge Wells, Kent TN1 1LQ  
[lovelivinghomes.co.uk](http://lovelivinghomes.co.uk)

