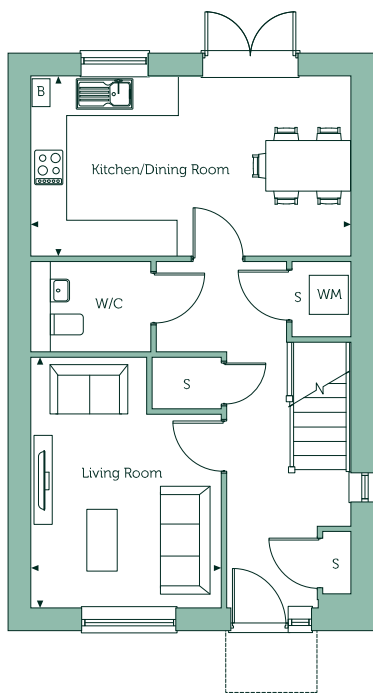


The Birch

Orbit Homes at Hanwood Park (Phase 2)



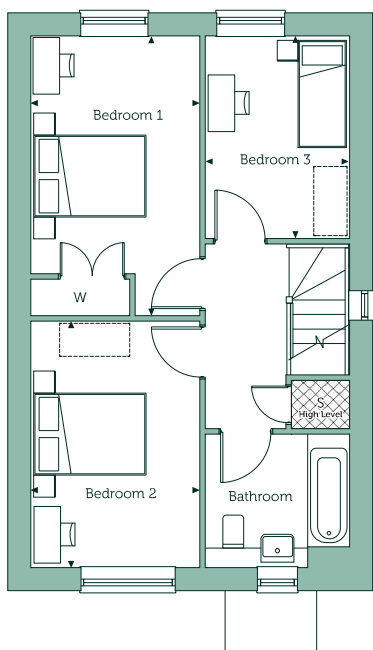
Ground Floor

Kitchen/Dining Room

9'10" x 17'4" 3.00m x 5.29m

Living Room

10'4" x 13'7" 3.16m x 4.14m



First Floor

Bedroom 1

9'3" x 15'2" 2.81m x 4.62m

Bedroom 2

9'3" x 13'5" 2.81m x 4.09m

Bedroom 3

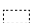
7'10" x 10'11" 2.39m x 3.35m

Gross internal area

1002 sq.ft. 93.1 sq.m

Handed Plots 8, 17, 27, 38, 40, 55, 61, 63, 65, 98, 115, 116 & 131

Key

B Boiler **S** Store Cupboard **W** Built-in Wardrobe  Wardrobe Space **W/M** Space for Washing Machine

Floorplans are not drawn to scale. Measurements are taken from areas marked ►. They are maximum approximate dimensions and given as a guide only. These should not be used as a basis for purchasing flooring or furniture. Orbit reserves the right to alter plans, specification, position of doors and windows and change tenure subject to demand without prior notice. External elevations vary from plot to plot. Please ask your Sales Consultant for current information when reserving your new home. Computer generated image overleaf is to be used for guidance only. November 2025. 00981-05.