

The background of the entire image is a soft-focus photograph of pink cherry blossoms. A large, translucent, light purple 'V' shape is superimposed over the center of the image, serving as a design element. The text is white and positioned within the upper and central parts of the 'V'.

VIVID AT

THE ORCHARDS

ALDERSHOT, HAMPSHIRE

HOW IT WORKS

Helping you find your perfect place...

- 1 View the listing for The Orchards and apply online:
<https://yourvividhome.co.uk/developments/the-orchards>

- 2 Once we've received your application, we'll check you're eligible to apply for Shared Ownership. One of our Sales Officers will get in touch to let you know if you meet the priority criteria for the development, this can take a few weeks when we're busy.

- 3 If we're able to progress your application, we'll signpost you to one of our panel financial advisors* to talk about your affordability and the share you could purchase (even if you're a potential cash buyer). If you choose to use them or your own financial advisor, they'll send us your completed financial assessment and some more documents like proof of your deposit and mortgage AIP (Agreement in Principle). Please note, VIVID are not a credit broker.

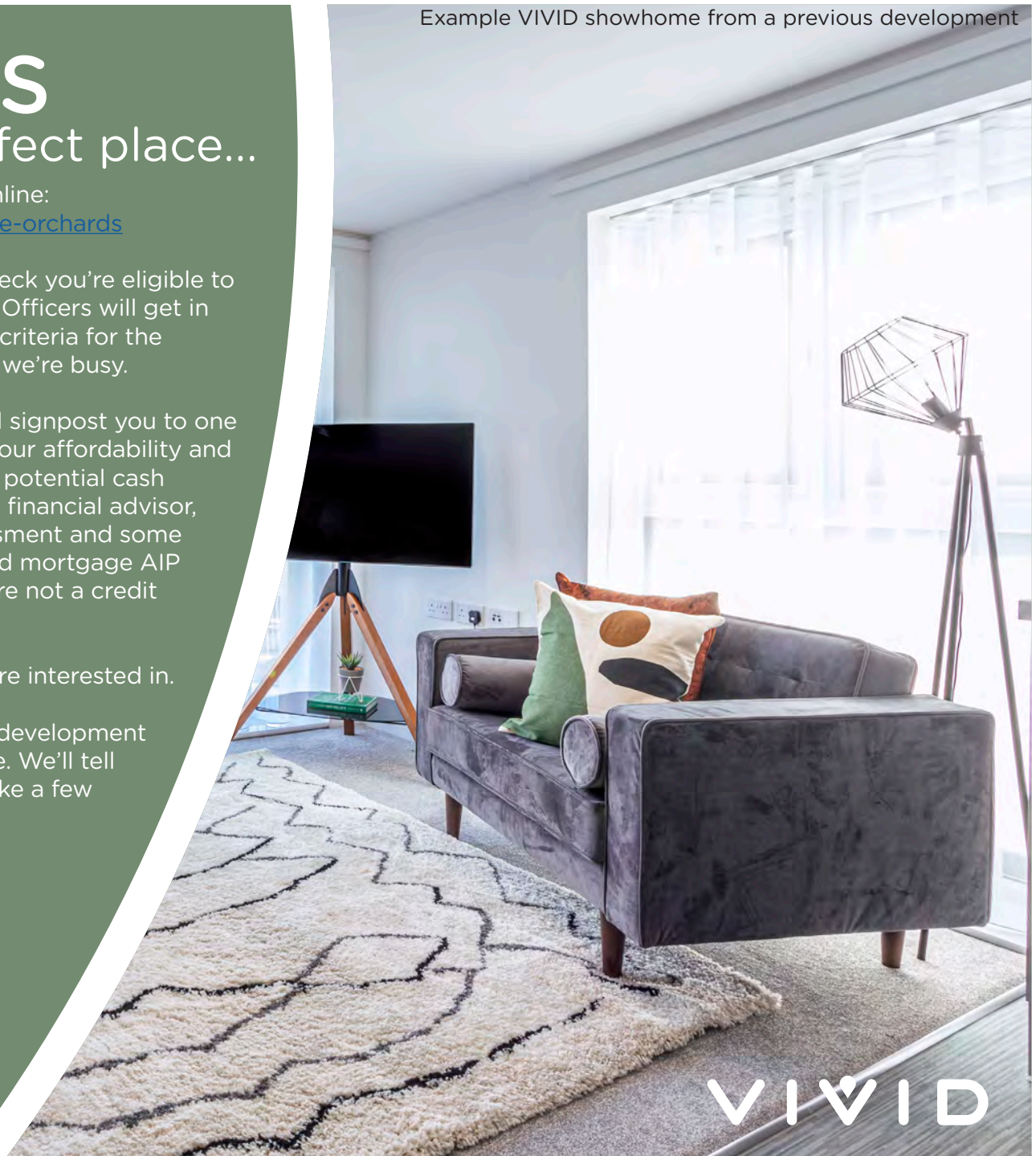
We'll also ask you to email us which plots you're interested in.

- 4 We'll review all the documents and check the development criteria to see if we're able to offer you a home. We'll tell you as soon as we can, sometimes this may take a few weeks whilst we complete this process
- 5

*There are many financial advisors you could use to understand and apply for a Shared Ownership mortgage on your behalf. Every financial advisor has a duty to find you the mortgage that's best for you. They'll keep in mind VIVID's timescales for any mortgage that is offered to you, as it needs to meet our sales timeframe. We're signposting you to our panel Financial Advisors as they are experts in Shared Ownership and know the VIVID process too. They'll complete your affordability checks free of charge. If you're offered a home and apply for a mortgage with them there will be a £250 fee, please check with your panel financial advisor when this will be payable. If you choose to use another Financial Advisor that's absolutely fine, and your choice won't impact any VIVID decision on whether you buy a home from us.

Please note; VIVID is not a credit broker.

Example VIVID showhome from a previous development



VIVID

TRUST VIVID

Always got a prompt response to my emails. I was kept informed throughout the process. Lovely staff.

Kara - Shared Owner

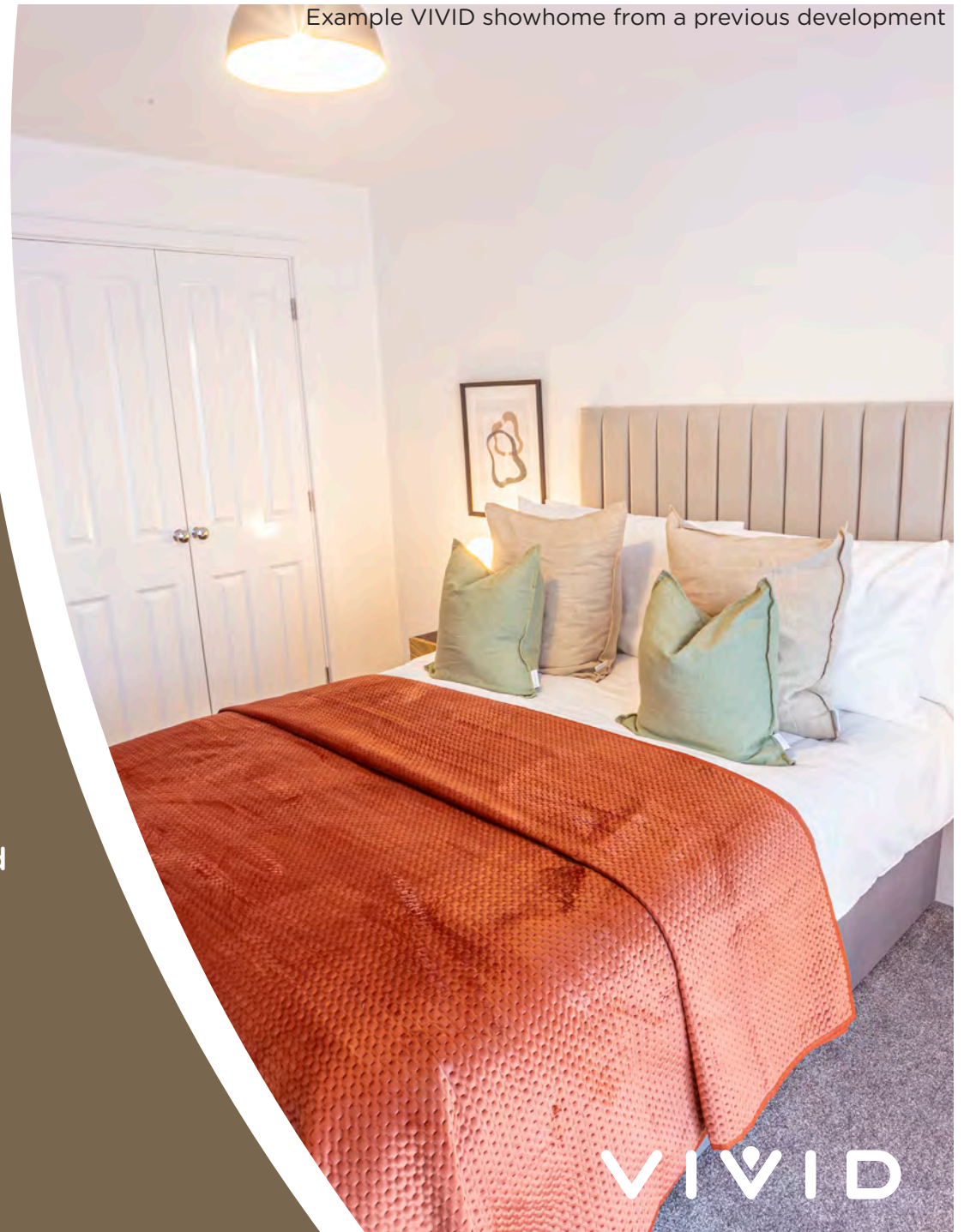
The service from start to finish was amazing. Fantastic communication, things happened when they said they would and the whole process was so easy.

Nicola - Shared Owner

VIVID have been outstanding from the very beginning of my application - they professionally supported me through the whole process explained every step and made me feel part of the VIVID family, I can't stress how amazing all the VIVID team have been - thank you.

Susan - Shared Owner

Example VIVID showhome from a previous development



VIVID

THE DEVELOPMENT

**Brand new 1 bedroom
apartments and 2 bedroom houses
now available to apply for!**

The Orchards is a development of new homes that can be found in the North Town area of Aldershot.

With new 1 bedroom apartments and 2 bedroom houses available with Shared Ownership there's plenty of opportunity to live within this area



THE LOCATION

The Orchards is well positioned with local amenities and travel access further afield

Shopping locally is focused around Aldershot town centre, which can easily be walked to, as it is just over a mile away. The town centre has a range of high-street stores and independent retailers within the Wellington Shopping centre, as well as restaurants, cafes, restaurants, shops and a supermarket. While the nearby towns of Camberley, Farnborough and Farnham provide further shopping, dining and entertaining venues. There is also a market twice a week in Andover, based on Union Street. This offers a wide range of goods including meat, fruit and vegetables, clothing and flowers.

A high standard of education is provided too, with a number of Good and Outstanding Ofsted rated Primary & Secondary Schools, all within 2 miles of the development.



VIVID



The Orchards

Plot 24
1 BEDROOM APARTMENT

SECOND FLOOR

| | |
|--------------------------------|------------------------------------|
| Living / Dining Room / Kitchen | 6.44m x 3.98m (12'-1" x 13'-1") |
| Bedroom 1 | 4.32m x 3.04m (14'-2" x 10'-0") |



SECOND FLOOR

Please note floorplans are not to scale and are indicative only, total areas are provided as gross internal areas and are subject to variance and these plans do not act as part of a legally binding contract, warranty or guarantee. These plans may not be to scale and dimensions may vary during the build programme. It is common for fixtures and fittings to change during the build programme, for example boilers. Location of windows, doors, kitchen units and appliances may differ. Doors may swing in to the opposite direction to that shown on selected houses. Dimensions, which are taken from the indicated points of measurement, are for guidance only and are not intended to be used to calculate the space needed for specific pieces of furniture. If your home is set within a terrace row, the position of the windows may vary from those shown on this plan. The property may also be a handed (mirrored) version of the layout shown here. We advise that you do not order any furniture based on these indicative plans, please wait until you can measure up fully, inside the property. Please speak to a member of our sales team about when you can gain access to take measurements. We will not be responsible for costs incurred due to ordering incorrect furniture. VIVID Housing Limited is registered in England and Wales as a registered society under the Co-operative and Community Benefit Societies Act 2014 under number 7544 with exempt charity status and as a registered provider of social housing with the Homes and Communities Agency under number 4850. Our registered office is at Peninsular House, Wharf Road, Portsmouth, Hampshire, PO2 8HB. All information correct at time of creation - June 2025.



The Orchards



Please note floorplans are not to scale and are indicative only, total areas are provided as gross internal areas and are subject to variance and these plans do not act as part of a legally binding contract, warranty or guarantee. These plans may not be to scale and dimensions may vary during the build programme. It is common for fixtures and fittings to change during the build programme, for example boilers. Location of windows, doors, kitchen units and appliances may differ. Doors may swing in to the opposite direction to that shown on selected houses. Dimensions, which are taken from the indicated points of measurement are for guidance only and are not intended to be used to calculate the space needed for specific pieces of furniture. If your home is set within a terrace row, the position of the windows may vary from those shown on this plan. The property may also be a handed (mirrored) version of the layout shown here. We advise that you do not order any furniture based on these indicative plans, please wait until you can measure up fully, inside the property. Please speak to a member of our sales team about when you can gain access to take measurements. We will not be responsible for costs incurred due to ordering incorrect furniture. VIVID Housing Limited is registered in England and Wales as a registered society under the Co-operative and Community Benefit Societies Act 2014 under number 7544 with exempt charity status and as a registered provider of social housing with the Homes and Communities Agency under number 4850. Our registered office is at Peninsular House, Wharf Road, Portsmouth, Hampshire, PO2 8HB. All information correct at time of creation - June 2025.

VIVID

The Orchards

Plots 17,18,19,20

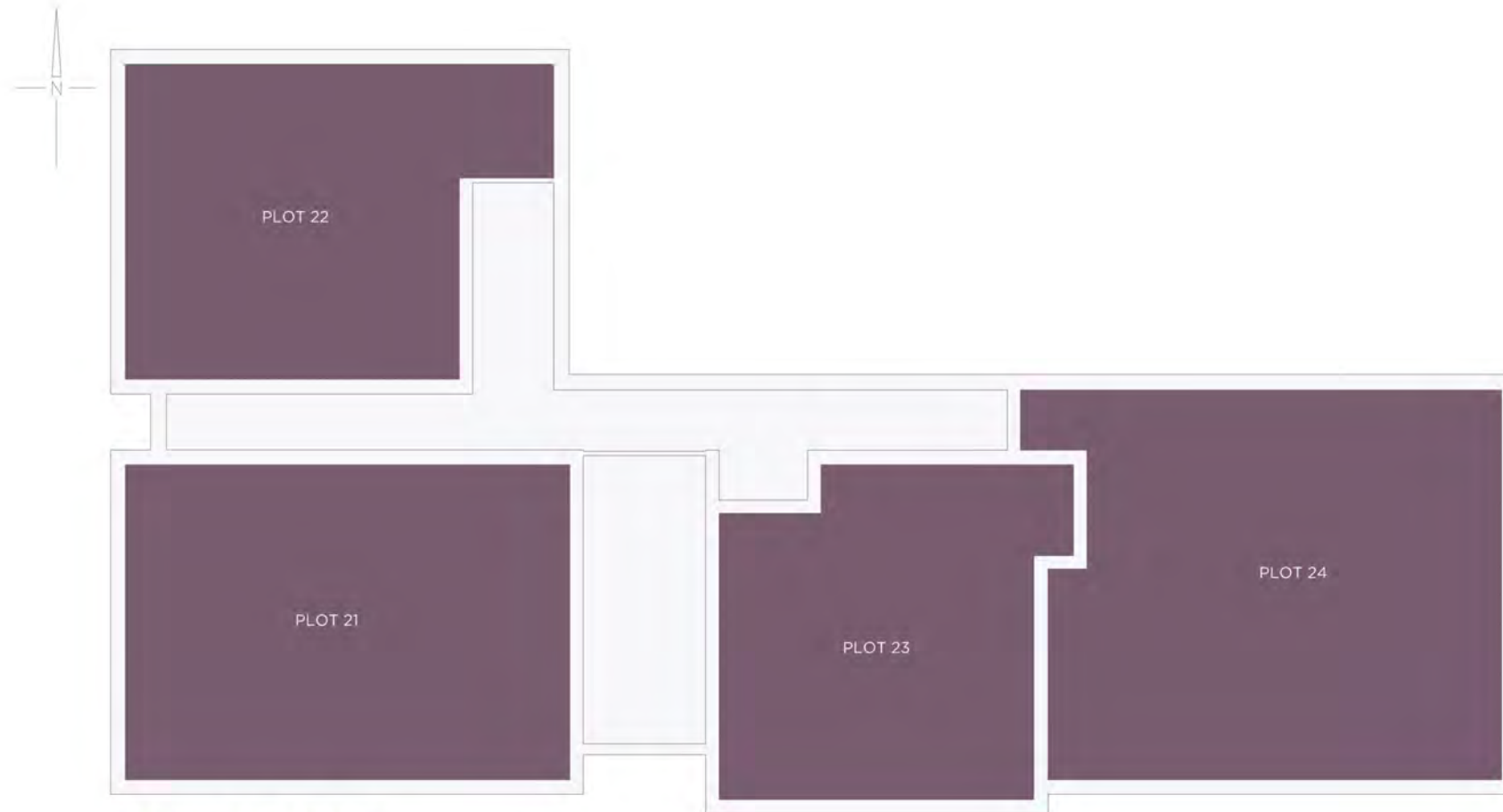


Please note floorplans are not to scale and are indicative only, total areas are provided as gross internal areas and are subject to variance and these plans do not act as part of a legally binding contract, warranty or guarantee. These plans may not be to scale and dimensions may vary during the build programme. It is common for fixtures and fittings to change during the build programme, for example boilers. Location of windows, doors, kitchen units and appliances may differ. Doors may swing in to the opposite direction to that shown on selected houses. Dimensions, which are taken from the indicated points of measurement are for guidance only and are not intended to be used to calculate the space needed for specific pieces of furniture. If your home is set within a terrace row, the position of the windows may vary from those shown on this plan. The property may also be a handed (mirrored) version of the layout shown here. We advise that you do not order any furniture based on these indicative plans, please wait until you can measure up fully, inside the property. Please speak to a member of our sales team about when you can gain access to take measurements. We will not be responsible for costs incurred due to ordering incorrect furniture. VIVID Housing Limited is registered in England and Wales as a registered society under the Co-operative and Community Benefit Societies Act 2014 under number 7544 with exempt charity status and as a registered provider of social housing with the Homes and Communities Agency under number 4850. Our registered office is at Peninsular House, Wharf Road, Portsmouth, Hampshire, PO2 8HB. All information correct at time of creation - June 2025.

VIVID

The Orchards

Plots 21,22,23,24



SECOND FLOOR

Please note floorplans are not to scale and are indicative only, total areas are provided as gross internal areas and are subject to variance and these plans do not act as part of a legally binding contract, warranty or guarantee. These plans may not be to scale and dimensions may vary during the build programme. It is common for fixtures and fittings to change during the build programme, for example boilers. Location of windows, doors, kitchen units and appliances may differ. Doors may swing in to the opposite direction to that shown on selected houses. Dimensions, which are taken from the indicated points of measurement are for guidance only and are not intended to be used to calculate the space needed for specific pieces of furniture. If your home is set within a terrace row, the position of the windows may vary from those shown on this plan. The property may also be a handed (mirrored) version of the layout shown here. We advise that you do not order any furniture based on these indicative plans, please wait until you can measure up fully, inside the property. Please speak to a member of our sales team about when you can gain access to take measurements. We will not be responsible for costs incurred due to ordering incorrect furniture. VIVID Housing Limited is registered in England and Wales as a registered society under the Co-operative and Community Benefit Societies Act 2014 under number 7544 with exempt charity status and as a registered provider of social housing with the Homes and Communities Agency under number 4850. Our registered office is at Peninsular House, Wharf Road, Portsmouth, Hampshire, PO2 8HB. All information correct at time of creation - June 2025.

VIVID

The Orchards



Please note floorplans are not to scale and are indicative only, total areas are provided as gross internal areas and are subject to variance and these plans do not act as part of a legally binding contract, warranty or guarantee. These plans may not be to scale and dimensions may vary during the build programme. It is common for fixtures and fittings to change during the build programme, for example boilers. Location of windows, doors, kitchen units and appliances may differ. Doors may swing in to the opposite direction to that shown on selected houses. Dimensions, which are taken from the indicated points of measurement are for guidance only and are not intended to be used to calculate the space needed for specific pieces of furniture. If your home is set within a terrace row, the position of the windows may vary from those shown on this plan. The property may also be a handed (mirrored) version of the layout shown here. We advise that you do not order any furniture based on these indicative plans, please wait until you can measure up fully, inside the property. Please speak to a member of our sales team about when you can gain access to take measurements. We will not be responsible for costs incurred due to ordering incorrect furniture. VIVID Housing Limited is registered in England and Wales as a registered society under the Co-operative and Community Benefit Societies Act 2014 under number 7544 with exempt charity status and as a registered provider of social housing with the Homes and Communities Agency under number 4850. Our registered office is at Peninsular House, Wharf Road, Portsmouth, Hampshire, PO2 8HB. All information correct at time of creation - June 2025.

VIVID

The Orchards



Please note floorplans are not to scale and are indicative only, total areas are provided as gross internal areas and are subject to variance and these plans do not act as part of a legally binding contract, warranty or guarantee. These plans may not be to scale and dimensions may vary during the build programme. It is common for fixtures and fittings to change during the build programme, for example boilers location of windows, doors, kitchen units and appliances may differ. Doors may swing in to the opposite direction to that shown on selected houses. Dimensions, which are taken from the indicated points of measurement are for guidance only and are not intended to be used to calculate the space needed for specific pieces of furniture. If your home is set within a terrace row, the position of the windows may vary from those shown on this plan. The property may also be a handed (mirrored) version of the layout shown here. We advise that you do not order any furniture based on these indicative plans, please wait until you can measure up fully, inside the property. Please speak to a member of our sales team about when you can gain access to take measurements. We will not be responsible for costs incurred due to ordering incorrect furniture. VIVID Housing Limited is registered in England and Wales as a registered society under the Co-operative and Community Benefit Societies Act 2014 under number 7544 with exempt charity status and as a registered provider of social housing with the Homes and Communities Agency under number 4850. Our registered office is at Peninsular House, Wharf Road, Portsmouth, Hampshire, PO2 8HB. All information correct at time of creation - June 2025.

VIVID

SPECIFICATION

Kitchen

- Patina Light Grey kitchen cabinets
- Marmo Bianco worktops
- Traditional oak grey white vinyl

Bathroom

- Traditional oak grey white vinyl

Other Internals

- Flooring in non-wet areas is Persian Doll from Cormar Carpets Apollo Plus Range

Parking

- Plot 18, 20, 22, 24 & 25 feature one parking space^ (Right to Use)
- Plot 17, 19, 21, 23, 24, 26, 27, 28, 29 & 30 feature two parking spaces^ (Right to Use)

Images shown are indicative and do not represent the final specification. VIVID reserves the right to change items in the specification dependent on availability, at any moment, and without prior notice during the build completion.
^parking spaces include EV charging points, please speak with your Sales Officer for more information



VIVID

SERVICES & ADDITIONAL INFO

- Utilities - Mains Gas, Electric, Water (Metered) & Waste Water
- Construction Type for Houses - Traditional
- Construction Type for Flats - Reinforced Concrete
- Solar Panels - All plots benefit from Solar Panels
- Broadband - Virgin & Openreach
<https://checker.ofcom.org.uk/en-gb/broadband-coverage>
- Broadband Coverage Checker -
<https://checker.ofcom.org.uk/en-gb/mobile-coverage>
- Mobile Coverage Checker -
- Planning - View the local website for more information

<https://www.rushmoor.gov.uk/>

The apartment block is located above a Community Facility. The entrance to this section of the block is separate from the apartment entrances however. Please speak to your Sales Officer for more info.

Please Note: Newbuild property specification and additional info is not always available, also newbuild property addresses may not be active immediately with all service providers. Please contact the team if you have additional queries.



VIVID

IMPORTANT INFORMATION ABOUT EXCHANGE AND COMPLETION DEADLINES

Please note that you're required to exchange contracts within 28 days of our solicitor issuing the contract pack to your appointed solicitor. Your completion must take place within 5 calendar days of your exchange of contracts or the handover from the developer. If you're also selling a property, these

deadlines also apply to all parties within your chain. This means your buyer—and any subsequent buyers in the chain—must be able to exchange and complete within the same timeframes. Before approving your reservation of one of our newbuild properties, we'll need confirmation that these exchange and completion deadlines can be met. If you can't meet these deadlines, your reservation may be cancelled and the property re-marketed.

Example VIVID showhome from a previous development



VIVID

WHO WE ARE

We're a customer-focused provider of affordable homes and the 4th largest builder amongst UK housing associations. We have an ambitious development programme, together with providing vital support services to our communities.

BUYING MORE SHARES

Shared Ownership enables you to buy more shares in your home over time, from an additional 10% to outright purchase (in most cases). We call this staircasing.

AFTER YOU MOVE IN

You can have confidence buying a VIVID home as our team are here to help you if you have any unforeseen issues or defects in your new home.

Example VIVID showhome from a previous development



VIVID

SO HOW CAN YOU ENJOY
ALL THIS FOR JUST £47,500?*

ONLY WITH VIVID SHARED OWNERSHIP

Shared ownership lets you buy a share of your new home. You can start at just 25% with a 5% deposit. You pay rent on the rest. If you buy a 25% share on one of these houses, you can expect the rent to be around £326.56 per month*. In the future, as your financial situation changes, you can buy greater shares if you want to. This is called staircasing. As your share goes up, your rent comes down. If you'd like to get a better understanding of how much buying a brand new home at The Orchards would cost you.

Visit www.yourvividhome.co.uk to see all
of our homes on offer with Shared Ownership!

*Prices are based on buying a 25% share in a 2 bedroom house with a FMV of £19,000, shares start from £47,500 with a monthly rent of example of £326.56 (Based on unsold equity at 2.75% of value). Terms and conditions apply.



VIVID

PRICELIST AND MORE INFORMATION

| Property type | Plot | Address | 100% Value* | Eg: FROM minimum 25% share (which you must raise mortgage & deposit for) | Eg: Initial monthly rent pcm FROM (based on 75% share you don't own) | Estimated monthly Service Charge | Projected handover date* | Lease Length | Council Tax Band | Important Information |
|----------------------------------|------|--|-------------|--|--|----------------------------------|--------------------------|--------------|------------------|---|
| 1 Bedroom Second Floor Apartment | 24 | Flat 6, 3 Denmark Street, Aldershot, Hampshire, GU12 4FJ | £190,000 | £47,500 | £326.56 | £85.47 | November 2025 | 990 Years | TBC | Energy Info Key Info |

VIVID

PRICELIST AND MORE INFORMATION

PLEASE NOTE THE FOLLOWING:

- Eligibility conditions apply.
- MOD Applicants will have priority followed by first come, first served.
- Initial Rent is calculated from 2.75%
- The 25% example above shows the minimum share available. Applicants will be means tested to confirm the share they purchase and are required to purchase the maximum affordable %.
- Successful applicants will have a maximum of 28 days ** to exchange contracts following VIVID's solicitor issuing the contract pack. You must then complete on the purchase within a maximum 5 days of either exchange of contracts or following handover from the developer.

*Prices & projected handover dates are for guidance only and are subject to change. Our newbuild Shared Ownership homes are valued by a RICS (Royal Institute Chartered Surveyor) surveyor which confirms the full market value for 3 months. Every 3 months we will have the homes revalued, to make sure they're in line with the current market. This means the price is non-negotiable. It also means the value of the homes could go up or down, so are subject to change.

If purchasing a property off-plan Handover dates are only projected and subject to change. VIVID will inform you of any changes to projected handover dates as and when received by the developer. Please note that we are not able to give you detailed information to the reasons for any extended delays due to confidentiality agreements within the contracts between VIVID and the developer.

By agreeing to reserve a property off-plan VIVID will not be responsible for any fees that you may incur due to delays in property completions.

** or if all legal paperwork and the mortgage offer is in you must complete the sale

VIVID

NOW IT'S TIME TO APPLY

yourvividhome.co.uk/developments/the-orchards



VIVID Housing Limited is registered in England and Wales as a registered society under the Co-operative and Community Benefit Societies Act 2014 under number 7544 with exempt charity status and as a registered provider of social housing with the Regulator of Social Housing under number 4850.

Our registered office is at Peninsular House, Wharf Road, Portsmouth, Hampshire, PO2 8HB. All information correct at time of creation

Updated 05.01.2026